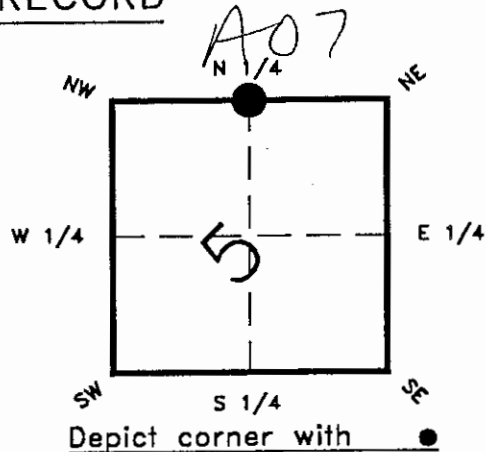


FLORIDA DEPARTMENT OF ENVIRONMENTAL PROTECTION  
CERTIFIED CORNER RECORD

CORNER DESCRIPTION:

NORTH 1/4 corner of Section 5 ,  
Twp 42 S. , Rge 23 E. ,  
Tallahassee Base Meridian,  
CHARLOTTE County(s), Florida.



MONUMENTATION DESCRIPTION:

Describe original monument and accessories, or subsequent restoration. Give sources of information. (If no attempt was made to search for the original monument and accessories, this information is not necessary.)

Description of corner evidence found:  
SET 8 FOOT 3/4" IRON PIPE W/CONTROL LB#642

State method(s) to determine corner location (lost corners only):

HORIZONTAL POSITION INFORMATION ( if determined ):

Latitude \_\_\_\_\_ Longitude \_\_\_\_\_  
Y(NORTHING-Ft.) 917805.897688 X(EASTING-Ft.) 646194.328086 Zone WEST  
279747.238 196960.031  
Convergence \_\_\_\_\_ Scale factor 0.99991424

Coordinate determination (circle one): Field traverse GPS  
Horizontal datum (circle one): NAD27 NAD83(1986) NAD83(1990) other (explain)

Order of accuracy as defined in "Standards and Specifications for Geodetic Control Networks" published by the Federal Geodetic Control Committee (circle one):  
1st, 2nd, 3rd, class II ,

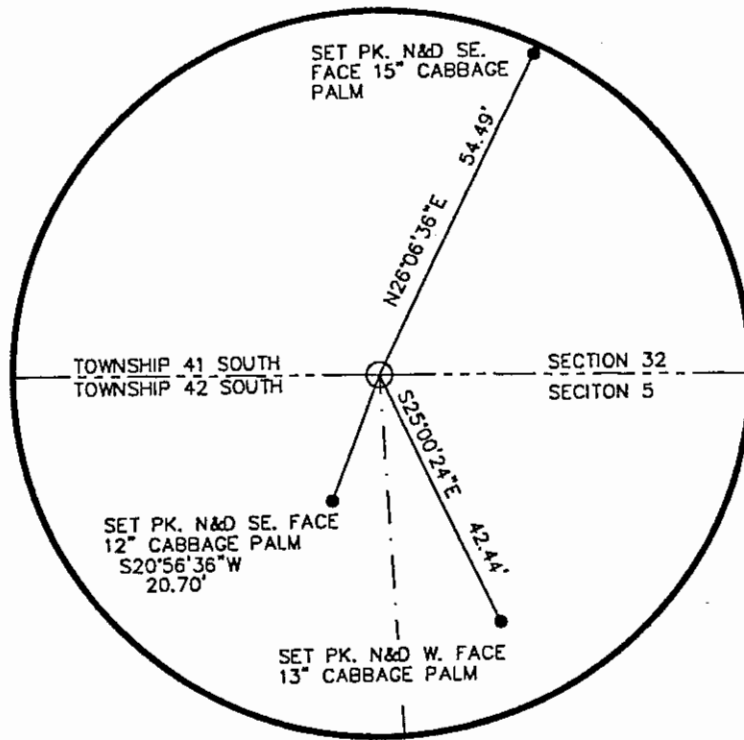
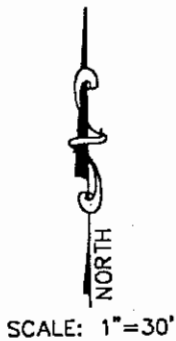
or Minimum Technical Standards (Chapter 21HH-6, F.A.C.) ratio of closure for field data (example 1:10,000), \_\_\_\_\_ . This does not specify an order of accuracy.

Control point(s) used for survey:

Comments:

RECEIVED  
SEP 25 1997  
SURVEY & MAPPING

**SKETCH:**



**\*\*PLEASE COMPLETE IN BLACK INK OR TYPE\*\***

All bearings and distances must be from the corner to the witness. Indicate whether corner was found, set, or replaced and show north arrow.

**REFERENCE MEASUREMENTS** ( at least three vicinity references must be given below even if they appear on the above sketch ):

Description	Bearing	Distance
SET PK. N&D W. FACE 13" CABBAGE PALM	S 25°00'24" E	42.44'
SET PK. N&D SE. FACE 12" CABBAGE PALM	S 20°56'36" W	20.70'
SET PK. N&D SE. FACE 15" CABBAGE PALM	N 26°06'36" E	54.49'

**SURVEYORS CERTIFICATE:** I certify the monument and accessories indicated above were field located on 9-2, 19 97.

*W. D. Powell* 4448  
SIGNATURE P.L.S. NO.

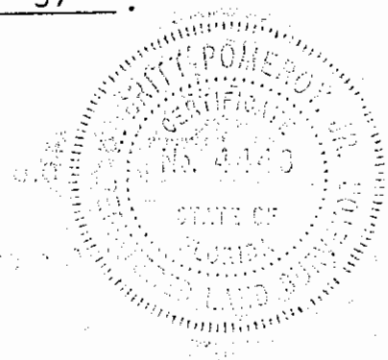
9-24-97  
DATE

JOHNSON ENGINEERING, INC. 642  
FIRM OR AGENCY LB NO.

P.O. BOX 1550  
ADDRESS

FORT MYERS FL. 33902  
CITY STATE

473



Completeness checked by: *WDP*

Accepted and filed: 10-1-97 Date

B.L.M. - I.D. OSCLONOG D.E.P. USE ONLY

**SEND TO:**  
Department of Environmental Protection  
Bureau of Survey and Mapping  
3900 Commonwealth Boulevard  
Mail Station 105  
Tallahassee, Florida 32399