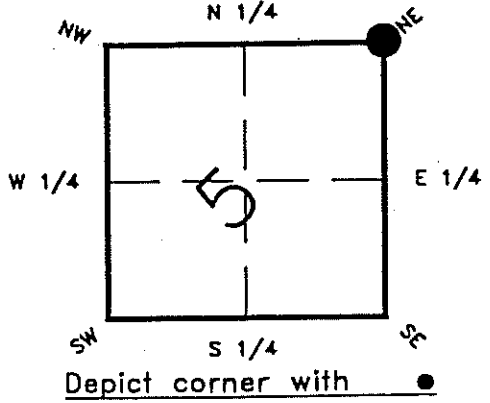


FLORIDA DEPARTMENT OF ENVIRONMENTAL PROTECTION
CERTIFIED CORNER RECORD

A09

CORNER DESCRIPTION:

NORTHEAST corner of Section 5 ,
Twp 42 S. , Rge 23 E. ,
Tallahassee Base Meridian,
CHARLOTTE County(s), Florida.



MONUMENTATION DESCRIPTION:

Describe original monument and accessories, or subsequent restoration. Give sources of information. (If no attempt was made to search for the original monument and accessories, this information is not necessary.)

Description of corner evidence found:
FOUND JOHNSON ENGINEERING CONCRETE MONUMENT

State method(s) to determine corner location (lost corners only):

HORIZONTAL POSITION INFORMATION (if determined):

Latitude _____ Longitude _____
Y(NORTHING-Ft.) 299738.73 917776.214146 X(EASTING-Ft.) 197770.4 648851.764884 Zone WEST
Convergence _____ Scale factor 0.99991424

Coordinate determination (circle one): Field traverse GPS
Horizontal datum (circle one): NAD27 NAD83(1986) NAD83(1990) other (explain)

Order of accuracy as defined in "Standards and Specifications for Geodetic Control Networks" published by the Federal Geodetic Control Committee (circle one):
1st, 2nd, 3rd, class II ,

or Minimum Technical Standards (Chapter 21HH-6, F.A.C.) ratio of closure for field data (example 1:10,000), _____ . This does not specify an order of accuracy.

Control point(s) used for survey:

Comments:

RECEIVED

SEP 25 1991

SURVEY & MAPPING

DEP 63-001(16)
REV: 10/18/93
PAGE 1 OF 2

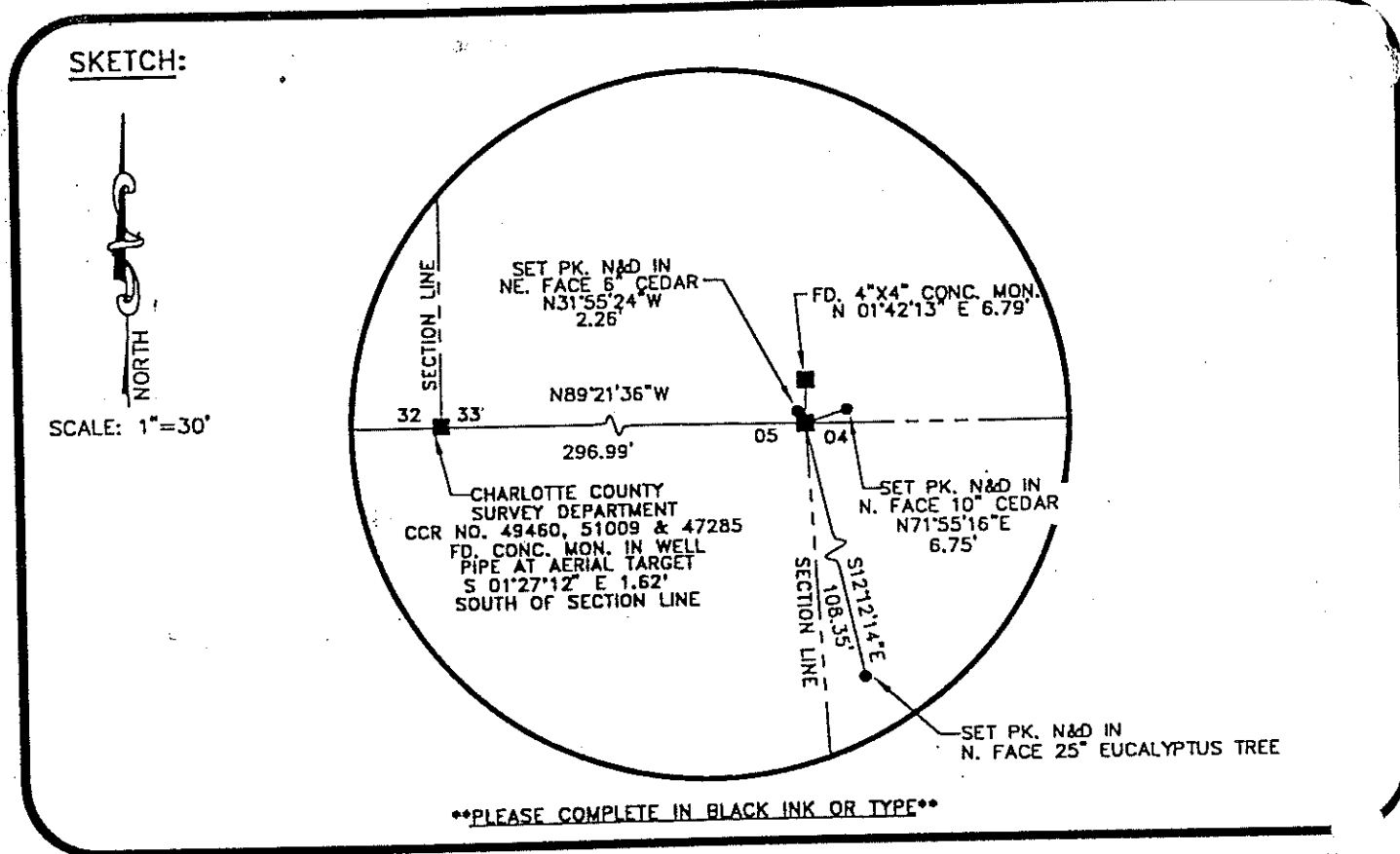
J:\21646\21914CCR

05000004

060457

DOC. #

SKETCH:



All bearings and distances must be from the corner to the witness. Indicate whether corner was found, set, or replaced and show north arrow.

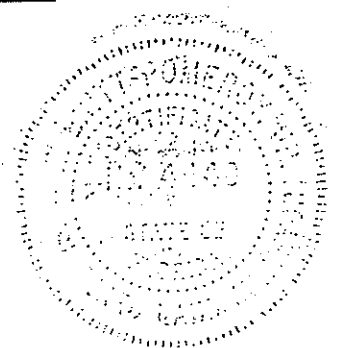
REFERENCE MEASUREMENTS (at least three vicinity references must be given below even if they appear on the above sketch):

Description	Bearing	Distance
SET PK N&D IN NE. FACE 6" CEDAR	N 31°55'24" W	2.26'
FD. 4"x4" CONC. MONUMENT	N 01° 42'13" E	6.79'
SET PK. N&D IN N. FACE 25" EUCALYPTUS	S 12°12'14" E	108.35'
FOUND CONC. MON. IN WELL PIPE	N 89°21'36" W	296.99'

SURVEYORS CERTIFICATE: I certify the monument and accessories indicated above were field located on 7-23, 19 97.

W. L. Powell 4448
 SIGNATURE P.L.S. NO.
 9-24-97
 DATE
 JOHNSON ENGINEERING, INC. 642
 FIRM OR AGENCY LB NO.
 P.O. BOX 1550
 ADDRESS
 FORT MYERS FL. 33902
 CITY STATE

473



Completeness checked by: *[Signature]*
 Accepted and filed: 10-1-97 Date
 B.L.M. - I.D. 05000004 D.E.P. USE ONLY

SEND TO:

Department of Environmental Protection
 Bureau of Survey and Mapping
 3900 Commonwealth Boulevard
 Mall Station 105
 Tallahassee, Florida 32399