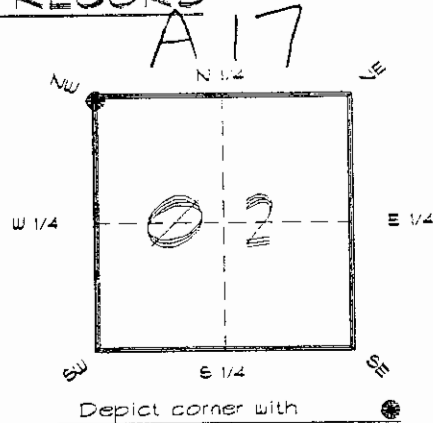


4223A17

FLORIDA DEPARTMENT OF ENVIRONMENTAL PROTECTION  
CERTIFIED CORNER RECORD

CORNER DESCRIPTION:

N. W. corner of Section 2  
Twp 42 S., Rge 23 E.  
Tallahassee Base Meridian,  
CHARLOTTE County(s), Florida.



MONUMENTATION DESCRIPTION:

Describe original monument and accessories, or subsequent restoration. Give sources of information. (If no attempt was made to search for the original monument and accessories, this information is not necessary.)

Description of corner evidence found:

L. WOOD POST, REPLACED WITH CONCRETE MONUMENT  
0.5' BELOW GRADE

State method(s) to determine corner location (lost corners only):

RECEIVED

JAN 31 1995

SURVEY & MAPPING

HORIZONTAL POSITION INFORMATION (if determined):

Latitude 26°51'30.41719" N Longitude 81°59'23.24186" W  
Y(Northing) 279720.848 m X(Easting) 201014.658 m Zone FLW  
Convergence 0°00'16.607" Scale factor 0.99994119

Coordinate determination (circle one): Field traverse GPS

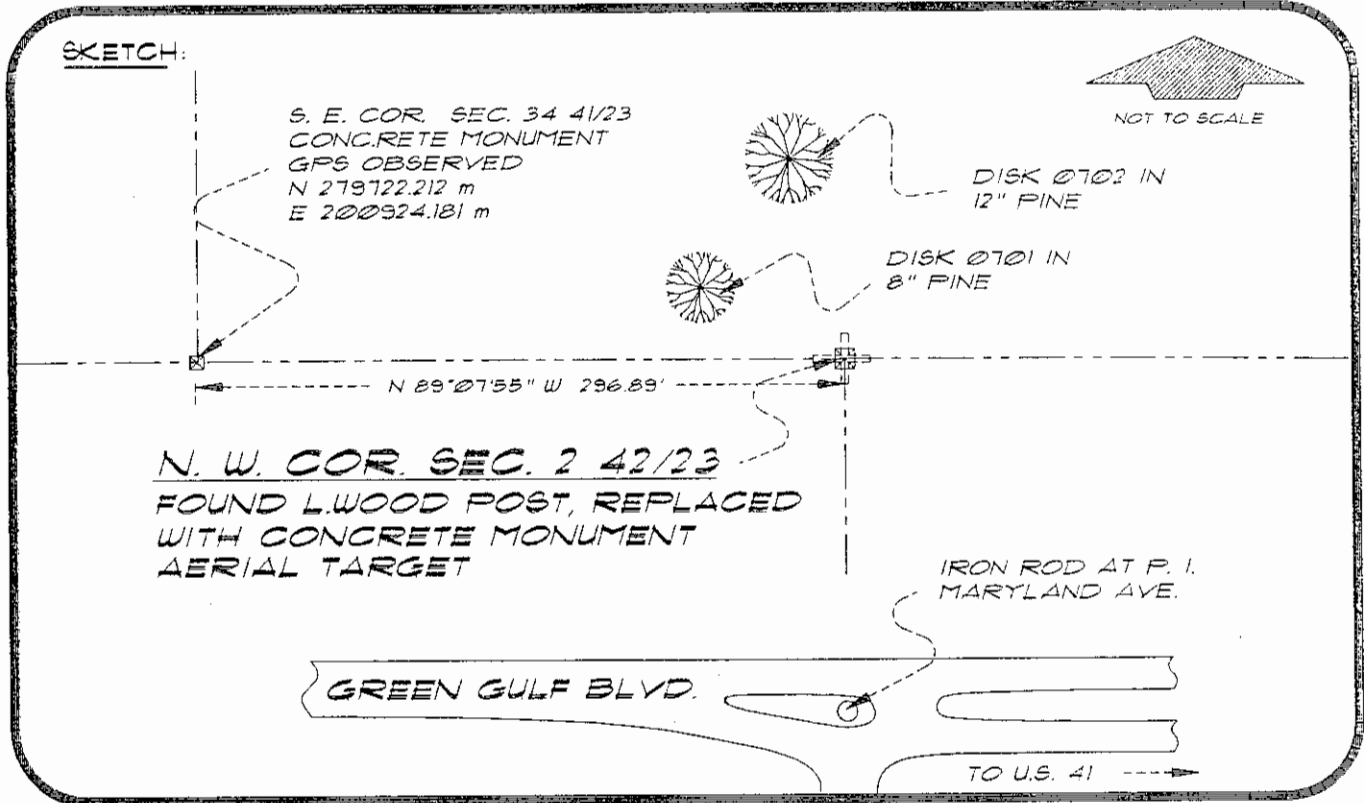
Horizontal datum (circle one): NAD27 NAD83(1986) NAD83(1990) other (explain)

Order of accuracy as defined in Standards and Specifications for Geodetic Control Networks published by the Federal Geodetic Control Committee (circle one):  
1st, 2nd, 3rd class

or Minimum Technical Standards (Chapter 6IG17, F.A.C.) ratio of closure for field data (example 1:10,000), \_\_\_\_\_ . This does not specify an order of accuracy.

Control point(s) used for survey: CHARLOTTE COUNTY HORIZONTAL CONTROL NETWORK INCLUDES HAYOLINE 2, FLACIDA 2, W260, PUNTPORT, & FLGPS 58 45 B ORDER STATIONS.

Comments:



BASIS OF BEARING SOLAR OBSERVATION REFER: FB 309/07  
SET SURVEY MARKER POST 3.0' N'LY

REFERENCE MEASUREMENTS

Description	Bearing	Distance
DISK Ø701 IN 8" PINE	N 70°22'02" W	37.02'
DISK Ø702 IN 12" PINE	N 06°18'46" W	54.90'
IRON ROD AT P.I.	S 01°26'08" E	176.62'

SURVEYORS CERTIFICATE: I certify the monument and accessories indicated above were field located on JULY 7, 1994

*R. P. Rose*

FLS 4260

UPDATED 1/26/95

SIGNATURE

1/30/95

DATE

CHARLOTTE COUNTY SURVEY DEPT.

FIRM OR AGENCY

7000 FLORIDA STREET

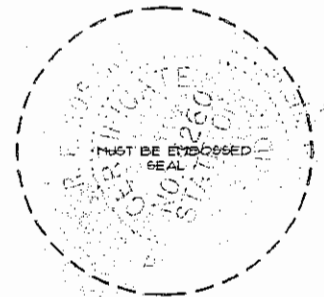
ADDRESS

PUNTA GORDA, FLORIDA 33950

CITY

STATE

472



Completeness checked by: *B. Dunt*

Accepted and filed: 3-1-95 Date

BLM. - I.D. 03000002 D.E.P. USE ONLY

SEND TO:

Department of Environmental Protection  
Bureau of Survey and Mapping  
3900 Commonwealth Boulevard  
Mail Station 105  
Tallahassee, Florida 32399