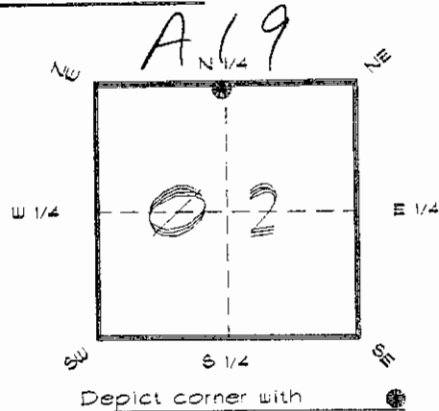


4223A19

**FLORIDA DEPARTMENT OF ENVIRONMENTAL PROTECTION
CERTIFIED CORNER RECORD**

CORNER DESCRIPTION:

N. 1/4 corner of Section 2,
Twp 42 S., Rge 23 E.,
Tallahassee Base Meridian,
CHARLOTTE County(s), Florida.



MONUMENTATION DESCRIPTION:

Describe original monument and accessories, or subsequent restoration. Give sources of information. (If no attempt was made to search for the original monument and accessories, this information is not necessary.)

Description of corner evidence found:
80d SPIKE WITH DISK R.L.S. 3760

RECEIVED

JAN 31 1995

State method(s) to determine corner location (lost corners only) **SURVEY & MAPPING**

HORIZONTAL POSITION INFORMATION (if determined):

Latitude 26°51'30.02620" N Longitude 81°58'53.56402" W
Y(Northing) 279708.907 m X(Easting) 201833.875 m Zone FLW
Convergence 0°00'30.015" Scale factor 0.99994122

Coordinate determination (circle one): Field traverse GPS

Horizontal datum (circle one): NAD27 NAD83(1986) NAD83(1990) other (explain)

Order of accuracy as defined in Standards and Specifications for Geodetic Control Networks published by the Federal Geodetic Control Committee (circle one):
1st, 2nd, 3rd class

or Minimum Technical Standards (Chapter 61G17, F.A.C.) ratio of closure for field data (example 1:10,000), _____ . This does not specify an order of accuracy.

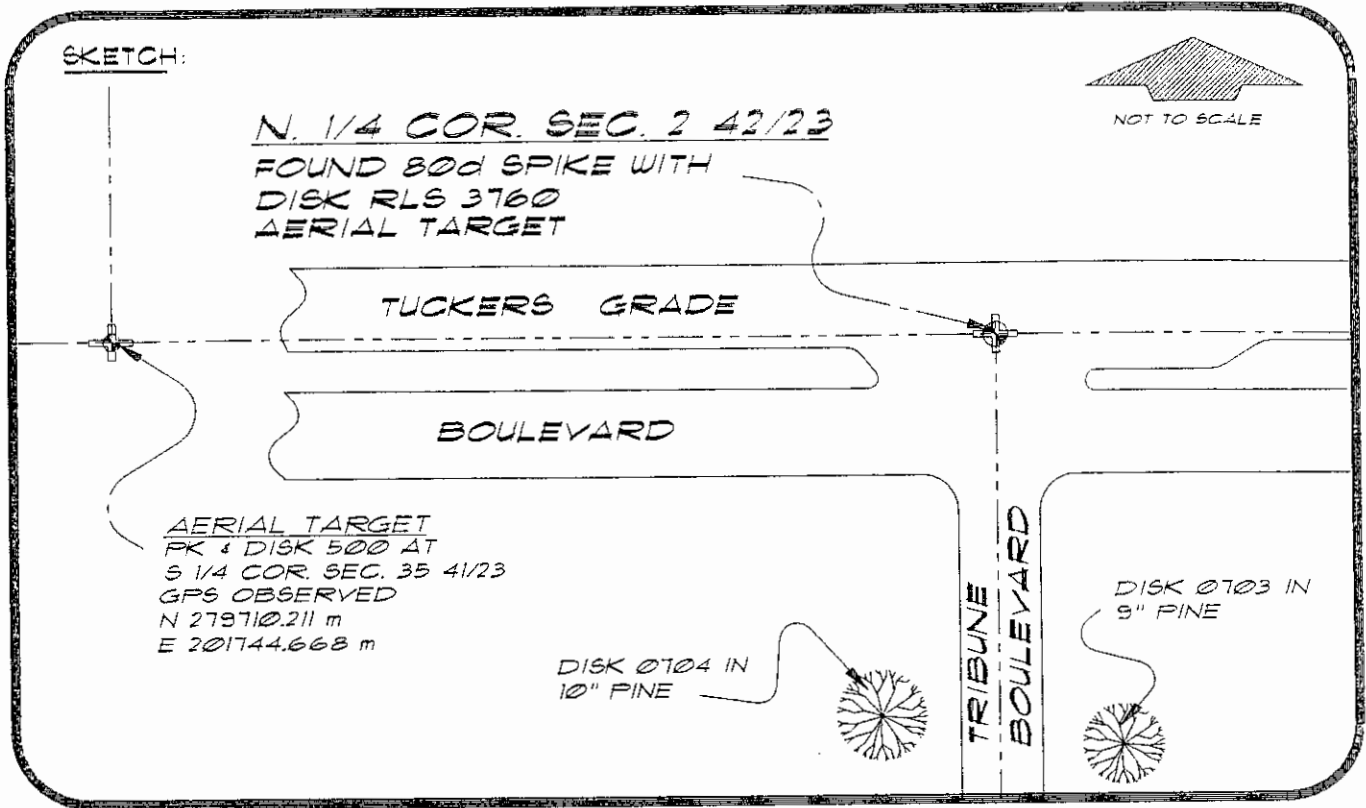
Control point(s) used for survey: CHARLOTTE COUNTY HORIZONTAL CONTROL NETWORK INCLUDES HAVOLINE 2, FLACIDA 2, W260, PUNTPORT, & FLGPS 58 AS B ORDER STATIONS.

Comments:

051017

4223A19

DOC. #



BASIS OF BEARING SOLAR OBSERVATION REFER: FB 309/05

REFERENCE MEASUREMENTS

Description	Bearing	Distance
DISK 0703 IN 9" PINE	S 21°16'21" E	117.40'
DISK 0704 IN 10" PINE	S 19°24'11" W	109.98'
S 1/4 COR. SEC. 35 41/23	N 89°10'07" W	297.72'

SURVEYORS CERTIFICATE: I certify the monument and accessories indicated above were field located on JULY 7, 1994

R. P. Rose

FLS 4260

UPDATED 1/24/94

SIGNATURE

1/30/95

DATE

CHARLOTTE COUNTY SURVEY DEPT.

FIRM OR AGENCY

7000 FLORIDA STREET

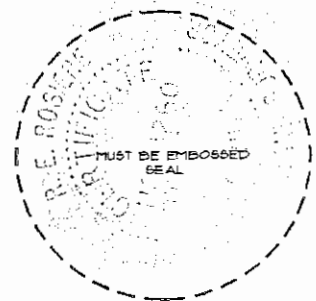
ADDRESS

FUNTA GORDA, FLORIDA 33950

CITY

STATE

472



Completeness checked by: *B. Smith*

Accepted and filed: 3-1-95 Date

BLM - I.D. 02CLOM40 D.E.P. USE ONLY

SEND TO:

Department of Environmental Protection
 Bureau of Survey and Mapping
 3900 Commonwealth Boulevard
 Mail Station 105
 Tallahassee, Florida 32399