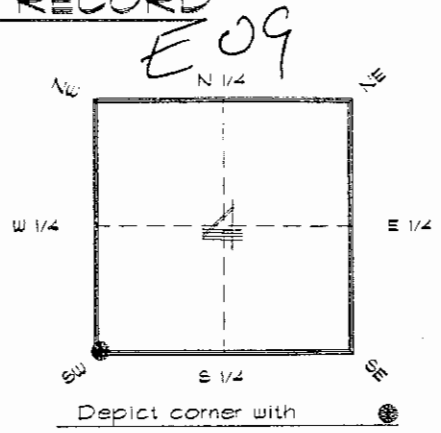


4223E09

FLORIDA DEPARTMENT OF ENVIRONMENTAL PROTECTION
CERTIFIED CORNER RECORD

CORNER DESCRIPTION:

S.W. corner of Section 4
Twp 42 S., Rge 23 E.
Tallahassee Base Meridian,
CHARLOTTE County(s), Florida.



MONUMENTATION DESCRIPTION:

Describe original monument and accessories, or subsequent restoration. Give sources of information. (If no attempt was made to search for the original monument and accessories, this information is not necessary.)

Description of corner evidence found:

40d SPIKE

State method(s) to determine corner location (lost corners only):

RECEIVED
JAN 31 1995
SURVEY & MAPPING

HORIZONTAL POSITION INFORMATION (if determined):

Latitude 26°50'37.592211" N Longitude 82°01'17.43427" W
Y(Northing) 278095.231 m X(Easting) 197862.258 m Zone FLW
Convergence -0°00'34.966" Scale factor 0.99994123

Coordinate determination (circle one): Field traverse GPS

Horizontal datum (circle one): NAD27 NAD83(1986) NAD83(1990) other (explain)

Order of accuracy as defined in Standards and Specifications for Geodetic Control Networks published by the Federal Geodetic Control Committee (circle one):
1st, 2nd, 3rd, class _____

or Minimum Technical Standards (Chapter 61G17, F.A.C.) ratio of closure for field data (example 1:10,000), _____. This does not specify an order of accuracy.

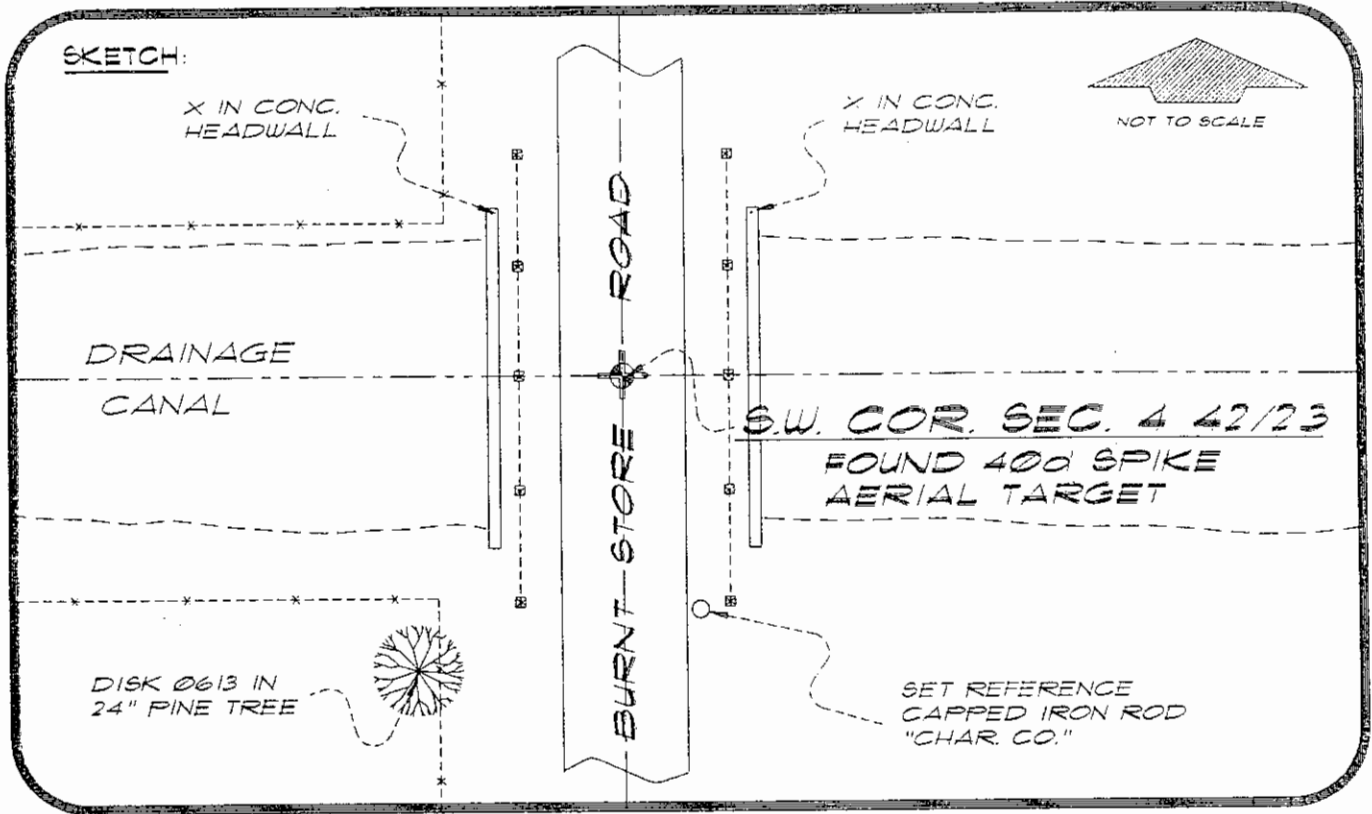
Control point(s) used for survey: CHARLOTTE COUNTY HORIZONTAL CONTROL NETWORK INCLUDES HAVOLINE 2, FLACIDA 2, W260, PUNTPORT, & FLGPS 5B AS B ORDER STATIONS.

Comments:

4223E09

DOC. #

051021



BASIS OF BEARING SOLAR OBSERVATION. REFER: FB 285/43

REFERENCE MEASUREMENTS

Description	Bearing	Distance
X IN CONC. HEADWALL	N 34°53'50" W	36.30'
X IN CONC. HEADWALL	N 33°52'28" E	37.15'
DISK 0613 IN 24" PINE	S 26°47'03" W	71.33'
SET REF. IRON ROD	S 13°59'27" E	61.30'

SURVEYORS CERTIFICATE: I certify the monument and accessories indicated above were field located on MARCH 8, 1994

R. Rose
SIGNATURE

FLS 4260

UPDATED 1/26/95

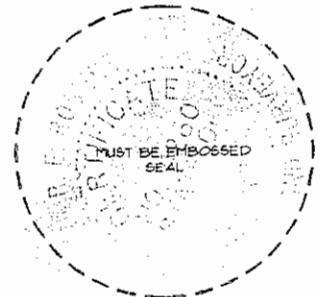
1/30/95
DATE

CHARLOTTE COUNTY SURVEY DEPT.
FIRM OR AGENCY

1000 FLORIDA STREET
ADDRESS

PUNTA GORDA, FLORIDA 33950
CITY STATE

473



Completeness checked by: *B. Dent*
 Accepted and filed: *3-1-95* Date
 BLM. - ID. 08050409 DNR USE ONLY

SEND TO:

Department of Environmental Protection
Bureau of Survey and Mapping
3900 Commonwealth Boulevard
Mail Station 105
Tallahassee, Florida 32399