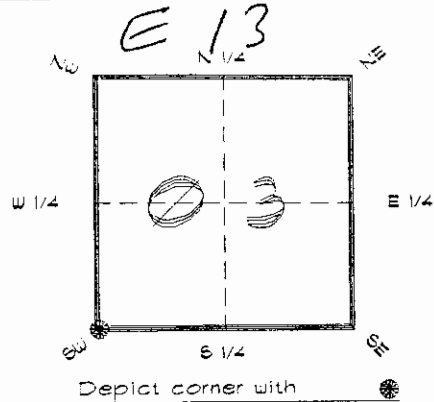


4223E13

**FLORIDA DEPARTMENT OF ENVIRONMENTAL PROTECTION**  
**CERTIFIED CORNER RECORD**

CORNER DESCRIPTION:

S. W. corner of Section 3  
Twp 42 S. , Rge 23 E.  
Tallahassee Base Meridian,  
CHARLOTTE County(s), Florida.



MONUMENTATION DESCRIPTION:

Describe original monument and accessories, or subsequent restoration. Give sources of information. (If no attempt was made to search for the original monument and accessories, this information is not necessary.)

Description of corner evidence found:

CONCRETE MONUMENT WITH TOP BROKEN

State method(s) to determine corner location (lost corners only):

HORIZONTAL POSITION INFORMATION ( if determined ):

Latitude 26°50'37.95580" N Longitude 82°00'18.96153" W

Y(Northing) 278106.250 m X(Easting) 199476.526 m Zone FLW

Convergence -0°00'08.5625 scale factor 0.99994118

Coordinate determination (circle one): Field traverse  GPS

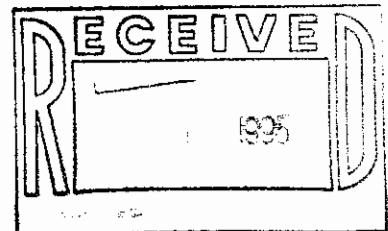
Horizontal datum (circle one): NAD27  NAD83(1986)  NAD83(1990) other (explain)

Order of accuracy as defined in Standards and Specifications for Geodetic Control Networks published by the Federal Geodetic Control Committee (circle one): 1st, 2nd, 3rd, class \_\_\_\_\_

or Minimum Technical Standards (Chapter 6IG-1, F.A.C.) ratio of closure for field data (example 1:10,000), \_\_\_\_\_ . This does not specify an order of accuracy.

Control point(s) used for survey: CHARLOTTE COUNTY HORIZONTAL CONTROL NETWORK INCLUDES HAVOLINE 2, PLACIDA 2, W260, PUNTPORT, & FLGPS 58 AS B ORDER STATIONS.

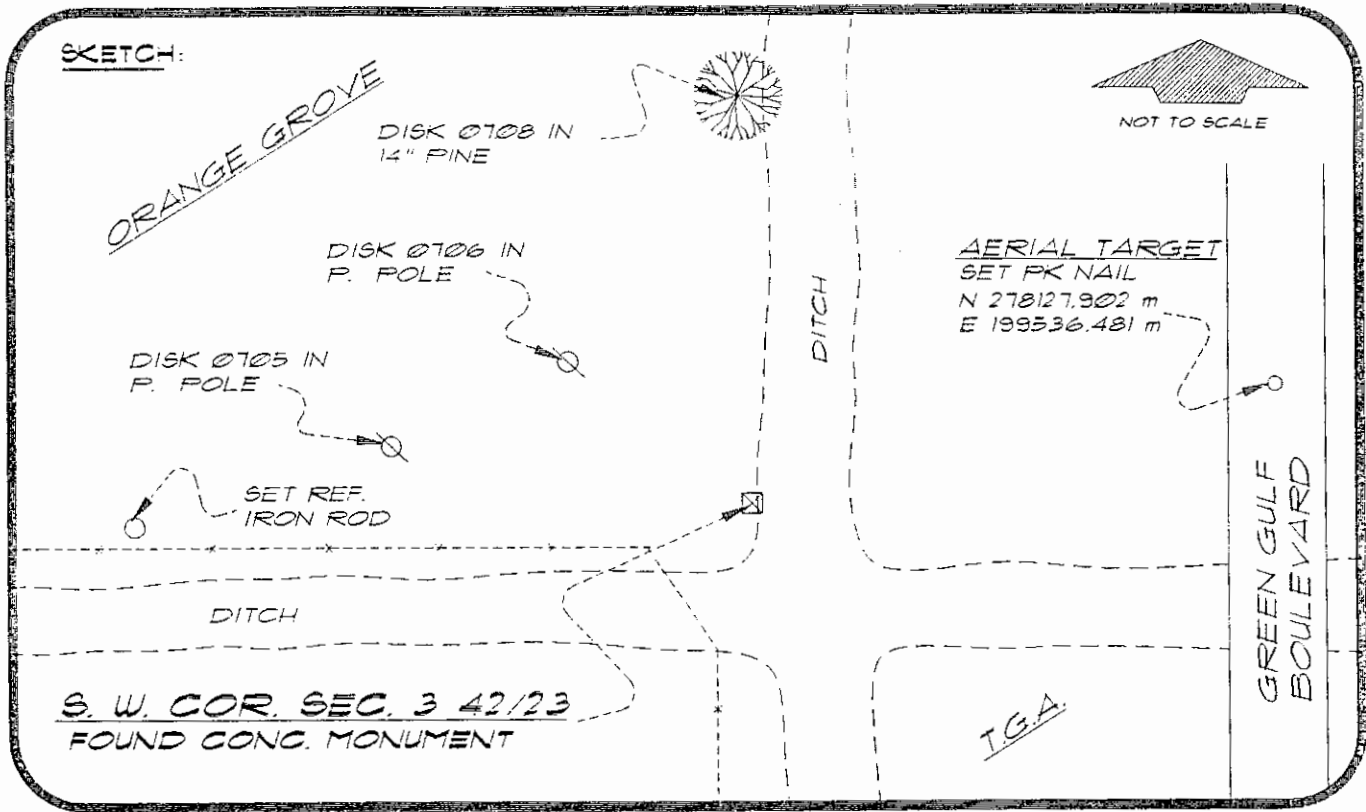
Comments:



4223E13

DOC. #

051322



BASIS OF BEARING SOLAR OBSERVATION

REFER: FB 309/11

SET SURVEY MARKER POST 3' W'LY

REFERENCE MEASUREMENTS

Description	Bearing	Distance
SET REF. IRON ROD	S 87°54'06" W	179.77'
DISK 0705 IN P. POLE	N 79°16'23" W	116.55'
DISK 0706 IN P. POLE	N 40°20'43" W	72.63'
DISK 0708 IN 14" PINE	N 01°29'46" W	202.51'
AERIAL TARGET	N 70°08'28" E	209.15'

SURVEYORS CERTIFICATE: I certify the monument and accessories indicated above were field located on JULY 12, 1994

*R. P. Rosendo*  
SIGNATURE

PLS 4260

UPDATED 2/21/95

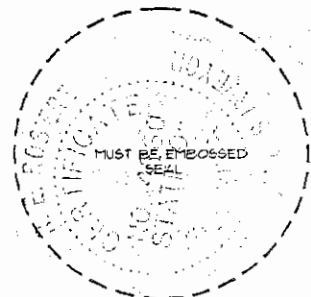
3-7-95  
DATE

CHARLOTTE COUNTY SURVEY DEPT.  
FIRM OR AGENCY

7000 FLORIDA STREET  
ADDRESS

PUNTA GORDA, FLORIDA 33950  
CITY STATE

473  
PUNTA GORDA  
SE



Completeness checked by: *B.A.*

Accepted and filed: 4-1-95 Date

BLM - ID. 09040310 DEP. USE ONLY

SEND TO:  
 Department of Environmental Protection  
 Bureau of Survey and Mapping  
 3900 Commonwealth Boulevard  
 Mail Station 105  
 Tallahassee, Florida 32399