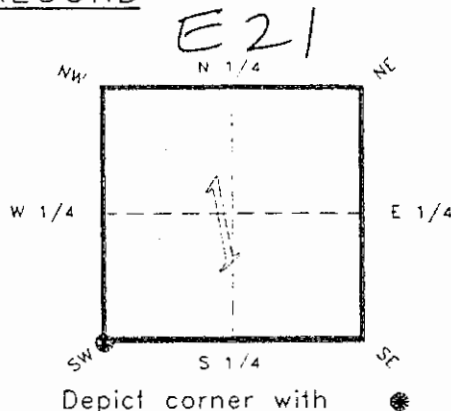


4223E21

FLORIDA DEPARTMENT OF ENVIRONMENTAL PROTECTION
CERTIFIED CORNER RECORD

CORNER DESCRIPTION:

S.W. corner of Section 1,
Twp 42 S., Rge 23 E.,
Tallahassee Base Meridian,
CHARLOTTE County(s), Florida.



MONUMENTATION DESCRIPTION:

Describe original monument and accessories, or subsequent restoration. Give sources of information. (If no attempt was made to search for the original monument and accessories, this information is not necessary.)

Description of corner evidence found:

L. WOOD POST REPLACED WITH CONCRETE MONUMENT

State method(s) to determine corner location (lost corners only):

HORIZONTAL POSITION INFORMATION (if determined):

Latitude 26°50'35.89524" N Longitude 81°58'21.77237" W
Y(Northing) 278043.115 m X(Easting) 202711.799 m Zone FLW.
Convergence 0°00'44.355" Scale factor 0.99994127

Coordinate determination (circle one):

Field traverse GPS

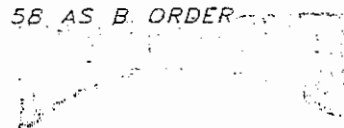
Horizontal datum (circle one): NAD27 NAD83(1986) NAD83(1990) other (explain)

Order of accuracy as defined in "Standards and Specifications for Geodetic Control Networks" published by the Federal Geodetic Control Committee (circle one):
1st, 2nd, 3rd, class 1

or Minimum Technical Standards (Chapter 21HH-6, F.A.C.) ratio of closure for field data (example 1:10,000), _____ . This does not specify an order of accuracy.

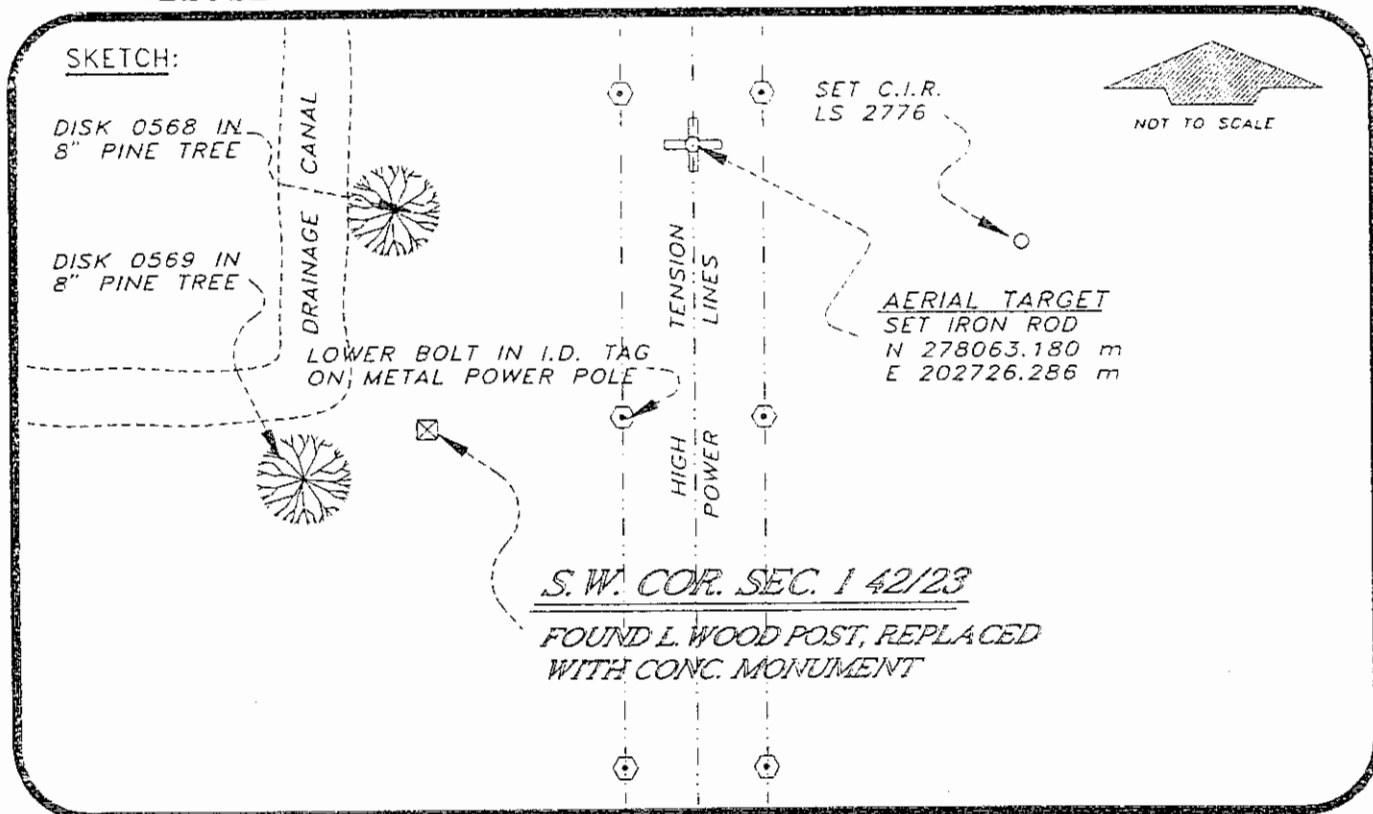
Control point(s) used for survey: *CHARLOTTE COUNTY HORIZONTAL CONTROL NETWORK INCLUDES HAVOLINE 2, PLACIDA 2, W260, PUNTPORT, & FLGPS 5B AS B. ORDER STATIONS.*

Comments:



FEB 20 1995

SURVEY & MAPPING



BASIS OF BEARING SOLAR OBSERVATION
 SET SURVEY MARKER POST 3' N'LY

REFER: FB 285/15

REFERENCE MEASUREMENTS

Description	Bearing	Distance
BOLT IN METAL P. POLE	N 88°01'09" E	41.86'
DISK 0569 IN 8" PINE	S 48°06'07" W	14.02'
DISK 0568 IN 8" PINE	N 03°45'47" W	41.30'
SET C.I.R. LS 2776	N 58°34'25" E	113.33'

SURVEYORS CERTIFICATE: I certify the monument and accessories indicated above were field located on JANUARY 4, 19 93.

R. P. [Signature]

PLS 4260

UPDATED 2/9/95

SIGNATURE

2-15-95

DATE

CHARLOTTE COUNTY SURVEY DEPT.

FIRM OR AGENCY

7000 FLORIDA STREET

ADDRESS

PUNTA GORDA,

FLA.

33950

CITY

STATE

472
 GILCHRIST



Completeness checked by: B. [Signature]
 Accepted and filed: 3-7-95 Date
 B.L.M. - I.D. 11020112 D.N.R. USE ONLY

SEND TO:

Department of Environmental Protection
 Bureau of Survey and Mapping
 3900 Commonwealth Boulevard
 Mail Station 105
 Tallahassee, Florida 32399