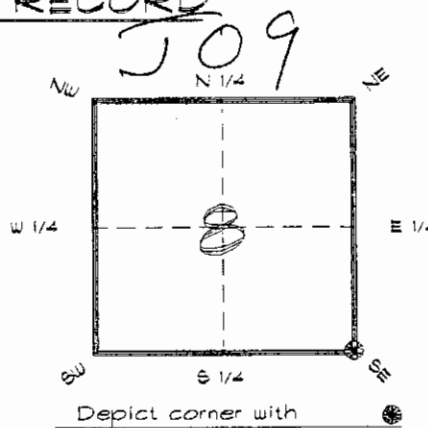


4223J09

FLORIDA DEPARTMENT OF ENVIRONMENTAL PROTECTION
CERTIFIED CORNER RECORD

CORNER DESCRIPTION:

S.E. corner of Section 8
Twp 42 S., Rge 23 E.
Tallahassee Base Meridian,
CHARLOTTE County(s), Florida.



MONUMENTATION DESCRIPTION:

Describe original monument and accessories, or subsequent restoration. Give sources of information. (If no attempt was made to search for the original monument and accessories, this information is not necessary.)

Description of corner evidence found:

20d NAIL WITH BOTTLE CAP

State method(s) to determine corner location (lost corners only):



JAN 31 1995

HORIZONTAL POSITION INFORMATION (If determined):

SURVEY & MAPPING

Latitude 26°49'44.60313" N Longitude 82°01'17.28216" W
Y(Northing) 276464.426 m X(Easting) 197866.182 m Zone FLW
Convergence -0°00'34.880" scale factor 0.99994123

Coordinate determination (circle one): Field traverse (GPS)

Horizontal datum (circle one): NAD27 NAD83(1986) (NAD83(1990)) other (explain)

Order of accuracy as defined in Standards and Specifications for Geodetic Control Networks published by the Federal Geodetic Control Committee (circle one):
1st, (2nd), 3rd, class _____

or Minimum Technical Standards (Chapter 6IG17, F.A.C.) ratio of closure for field data (example 1:10,000), _____ . This does not specify an order of accuracy.

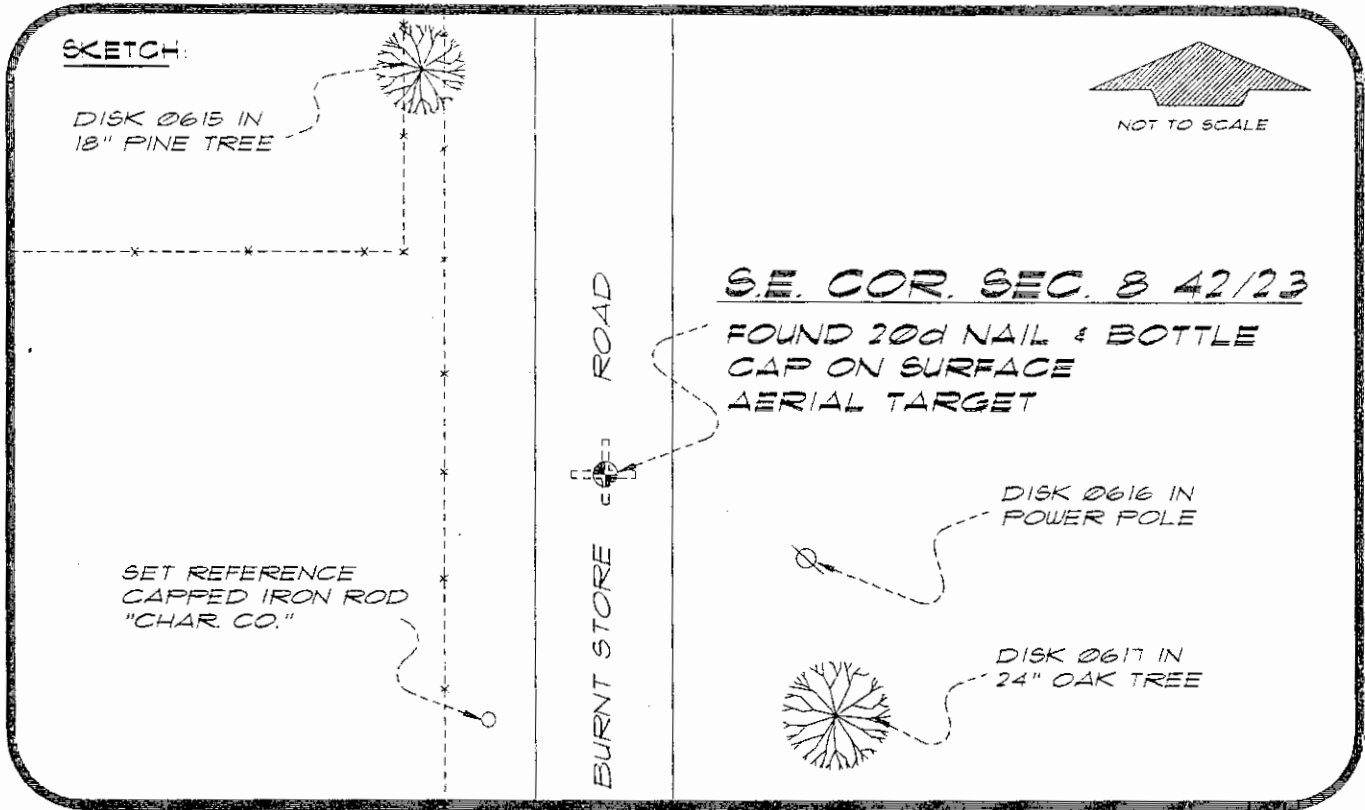
Control point(s) used for survey: CHARLOTTE COUNTY HORIZONTAL CONTROL NETWORK INCLUDES HAYOLINE 2, FLACIDA 2, W260, PUNTPORT, & FLGPS 58 AS B ORDER STATIONS.

Comments:

4223J09

051022

DOC. #



BASIS OF BEARING SOLAR OBSERVATION. REFER: FB 285/17

REFERENCE MEASUREMENTS

Description	Bearing	Distance
DISK 0615 IN 18" PINE	N 19°50'14" W	124.75'
DISK 0616 IN P. POLE	S 66°42'40" E	49.23'
DISK 0617 IN 24" OAK	S 36°57'32" E	80.20'
CAPPED IRON ROD	S 13°56'12" W	65.60'

SURVEYORS CERTIFICATE: I certify the monument and accessories indicated above were field located on MARCH 9, 1994

R. P. Ross

PLS 4260

UPDATED 1/26/95

SIGNATURE

1/30/95

DATE

CHARLOTTE COUNTY SURVEY DEPT.

FIRM OR AGENCY

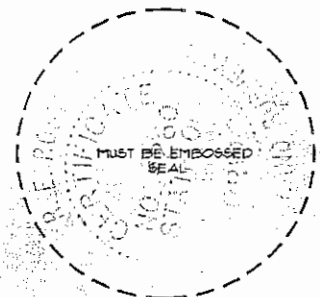
7000 FLORIDA STREET

ADDRESS

PUNTA GORDA, FLORIDA 33950

CITY

STATE



473

Completeness checked by: *R. P. Ross*

Accepted and filed: *3-1-95*

BLM. - ID. 17080916 Date 3-1-95 DNR USE ONLY

SEND TO:

Department of Environmental Protection
Bureau of Survey and Mapping
3900 Commonwealth Boulevard
Mail Station 105
Tallahassee, Florida 32399