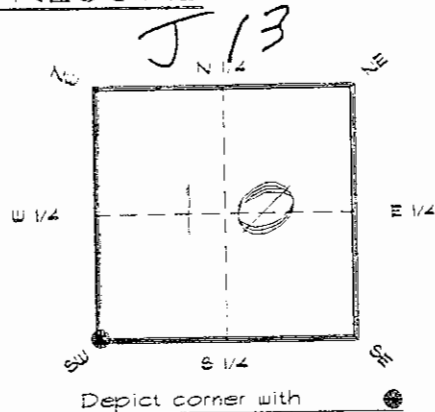


4223J13

FLORIDA DEPARTMENT OF ENVIRONMENTAL PROTECTION  
CERTIFIED CORNER RECORD

CORNER DESCRIPTION:

S. W. corner of Section 10,  
Twp 42 S., Rge 23 E.,  
Tallahassee Base Meridian,  
CHARLOTTE County(s), Florida.



MONUMENTATION DESCRIPTION:

Describe original monument and accessories, or subsequent restoration. Give sources of information. (If no attempt was made to search for the original monument and accessories, this information is not necessary.)

Description of corner evidence found:

CONCRETE MONUMENT WITH TOP BROKEN

RECEIVED

State method(s) to determine corner location (lost corners only):

JAN 31 1995

SURVEY & MAPPING

HORIZONTAL POSITION INFORMATION (if determined):

Latitude 26°49'45.19494" N Longitude 82°00'17.97909" W

Y(Northing) 276482.469 m X(Easting) 199503.585 m Zone FLW

Convergence -0°00'08.115" Scale factor 0.99994118

Coordinate determination (circle one): Field traverse (GPS)

Horizontal datum (circle one): NAD27 NAD83(1986) (NAD83(1990)) other (explain)

Order of accuracy as defined in Standards and Specifications for Geodetic Control Networks published by the Federal Geodetic Control Committee (circle one): 1st, (2nd), 3rd, class

or Minimum Technical Standards (Chapter 6IG17, F.A.C.) ratio of closure for field data (example 1:10,000), This does not specify an order of accuracy.

Control point(s) used for survey: CHARLOTTE COUNTY HORIZONTAL CONTROL NETWORK INCLUDES HAYOLINE 2, PLACIDA 2, W260, PUNTPORT, & FLGPS 58 AS B ORDER STATIONS.

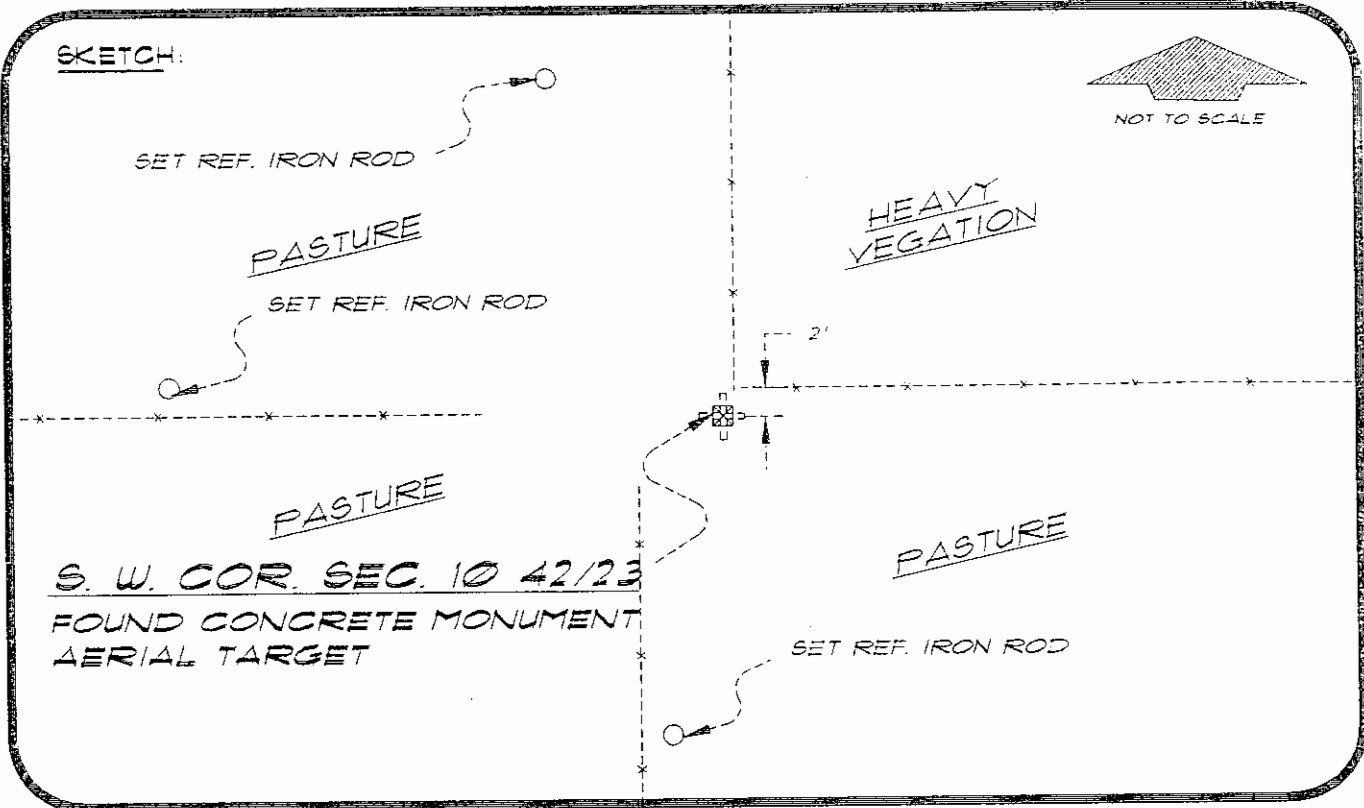
Comments:

051023

4223U13

DOC. #

SKETCH:



BASIS OF BEARING SOLAR OBSERVATION  
 SET SURVEY MARKER POST 3' N'LY  
 REFERENCE MEASUREMENTS

REFER: FB 285/74

Description	Bearing	Distance
SET REF. IRON ROD	N 20°15'30" W	101.13'
SET REF. IRON ROD	N 89°33'51" W	102.17'
SET REF. IRON ROD	S 05°13'11" W	100.57'

SURVEYORS CERTIFICATE: I certify the monument and accessories indicated above were field located on JUNE 21, 1994

*R. P. Ross*  
 SIGNATURE

PLS 4260

UPDATED 1/26/95

1/30/95

DATE

CHARLOTTE COUNTY SURVEY DEPT.

FIRM OR AGENCY

7000 FLORIDA STREET

ADDRESS

FUNTA GORDA, FLORIDA 33950

CITY

STATE

473



Completeness checked by: *R. P. Ross*  
 Accepted and filed: *3-1-95*  
 Date  
 BLM. - I.D. 16091815 DEP. USE ONLY

SEND TO:

Department of Environmental Protection  
 Bureau of Survey and Mapping  
 3900 Commonwealth Boulevard  
 Mail Station 105  
 Tallahassee, Florida 32399