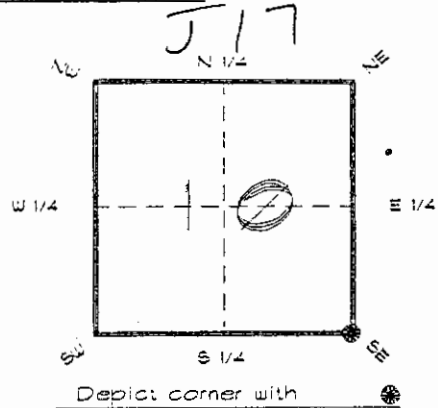


FLORIDA DEPARTMENT OF ENVIRONMENTAL PROTECTION
CERTIFIED CORNER RECORD

CORNER DESCRIPTION:

S. E. corner of Section 10
Twp 42 S., Rge 23 E.
Tallahassee Base Meridian,
CHARLOTTE County(s), Florida.



MONUMENTATION DESCRIPTION:

Describe original monument and accessories, or subsequent restoration. Give sources of information. (If no attempt was made to search for the original monument and accessories, this information is not necessary.)

Description of corner evidence found:

CONCRETE MONUMENT 2' ABOVE GROUND

State method(s) to determine corner location (lost corners only):

HORIZONTAL POSITION INFORMATION (if determined):

Latitude 26°49'45.30202" N Longitude 81°59'20.77279" W
Y(Northing) 276485.801 m X(Easting) 201083.091 m Zone FLW
Convergence 0°00'17.705" Scale factor 0.99994119

Coordinate determination (circle one): Field traverse (GPS)

Horizontal datum (circle one): NAD27 NAD83(1986) NAD83(1990) other (explain)

Order of accuracy as defined in Standards and Specifications for Geodetic Control Networks published by the Federal Geodetic Control Committee (circle one): 1st, 2nd, 3rd, class 1

or Minimum Technical Standards (Chapter 61G17, F.A.C.) ratio of closure for field data (example 1:10,000), . This does not specify an order of accuracy.

Control point(s) used for survey: CHARLOTTE COUNTY HORIZONTAL CONTROL NETWORK INCLUDES HAYOLINE 2, PLACIDA 2, W260, PUNTPORT, & FLGPS 38 AS B ORDER STATIONS.

Comments:

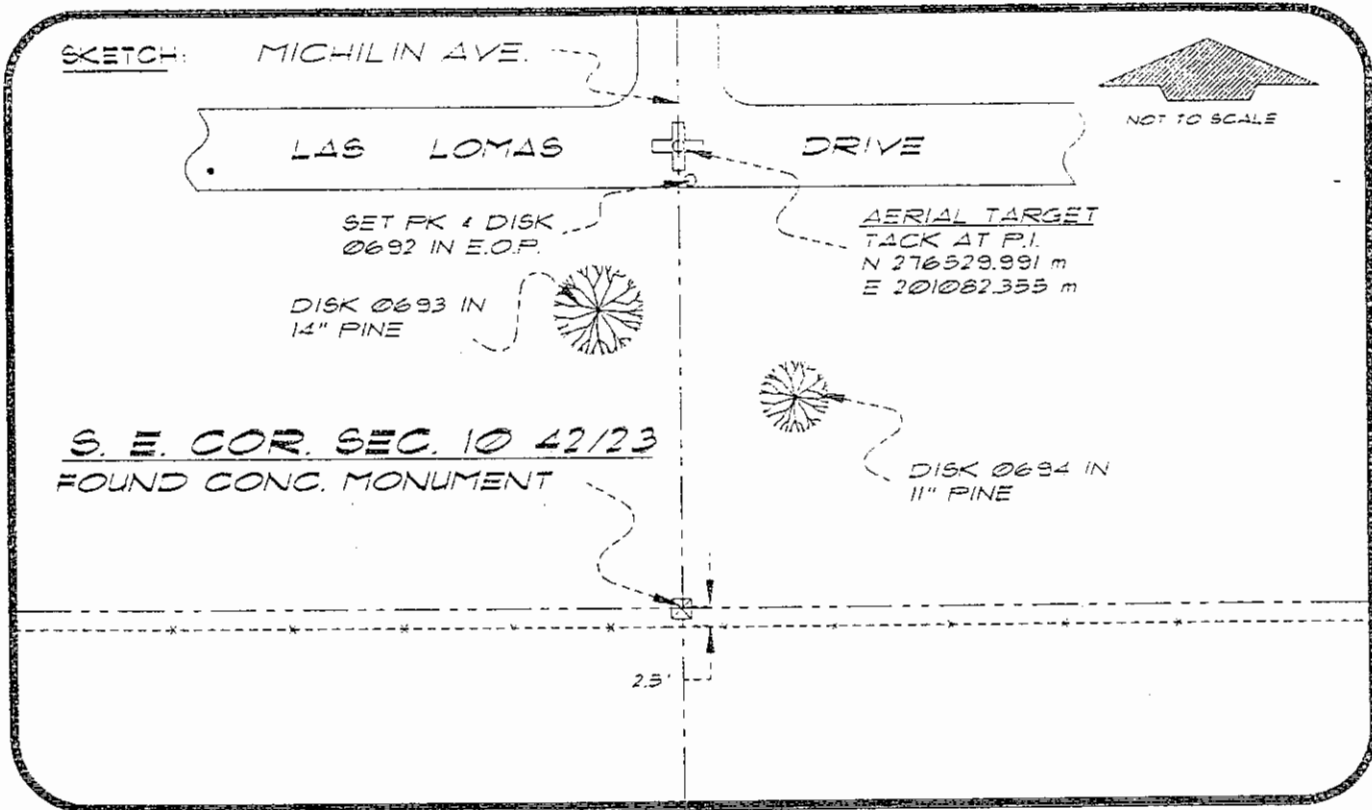
RECEIVED

FEB 20 1995

051024

4223J17

DOC. #



BASIS OF BEARING SOLAR OBSERVATION REFER: FB 309/03

SET SURVEY MARKER POST 3' S'LY

REFERENCE MEASUREMENTS

Description	Bearing	Distance
PK & DISK 0692 IN E.O.P.	N 00°37'04" W	135.80'
DISK 0693 IN 14" PINE	N 08°04'00" W	90.86'
DISK 0694 IN 11" PINE	N 16°40'38" E	70.86'
AERIAL TARGET	N 00°56'55" W	145.01'

SURVEYORS CERTIFICATE: I certify the monument and accessories indicated above were field located on JUNE 21, 1994

R. Ross
 SIGNATURE PLS 4260

2-15-95
 DATE

UPDATED 1/30/95

CHARLOTTE COUNTY SURVEY DEPT.
 FIRST OR AGENCY

1000 FLORIDA STREET
 ADDRESS

PUNTA GORDA, FLORIDA 33950
 CITY STATE

472



Completeness checked by: *B. Binton*

Accepted and filed: 3-1-95 Date

BLM. - ID. 1510114 DEP USE ONLY

SEND TO:

Department of Environmental Protection
 Bureau of Survey and Mapping
 3900 Commonwealth Boulevard
 Mail Station 105
 Tallahassee, Florida 32399