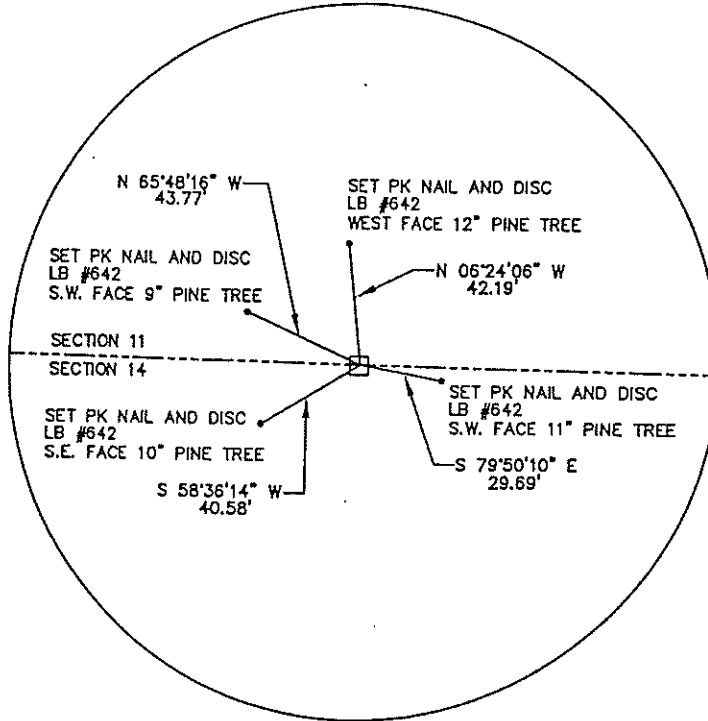
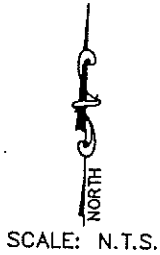


4223 J19

054815

DOC. #

SKETCH:



PLEASE COMPLETE IN BLACK INK OR TYPE

All bearings and distances must be from the corner to the witness. Indicate whether corner was found, set, or replaced and show north arrow.

REFERENCE MEASUREMENTS (at least three vicinity references must be given below even if they appear on the above sketch):

Description	Bearing	Distance
SET PK NAIL AND DISC LB #642 W. FACE 12" PINE	N 06° 24' 06" W	42.19'
SET PK NAIL AND DISC LB #642 SW. FACE 11" PINE	S 79° 50' 10" E	29.69'
SET PK NAIL AND DISC LB #642 SE. FACE 10" PINE	S 58° 36' 14" W	40.58'
SET PK NAIL AND DISC LB #642 SW. FACE 9" PINE	N 65° 48' 16" W	43.77'

SURVEYORS CERTIFICATE: I certify the monument and accessories indicated above were set on OCTOBER, 20 19 95.

James D. Merrill 5527
SIGNATURE FIRM NO.

11-16-95
DATE

JOHNSON ENGINEERING, INC. 642
FIRM OR AGENCY LB NO.

P.O. BOX 1550
ADDRESS

FORT MYERS FL 33902
CITY STATE

472
GULCHMIST

Completeness checked by: *B. Smith*
Accepted and filed: *12-1-95*
B.L.M. - I.D. 14CLO011 Date
D.E.P. USE ONLY

SEND TO:

Department of Environmental Protection
Bureau of Survey and Mapping
3900 Commonwealth Boulevard
Mail Station 105
Tallahassee, Florida 32399

DEP 63-001(16)
REV. 10/18/93
PAGE 2 OF 2