

4223J21

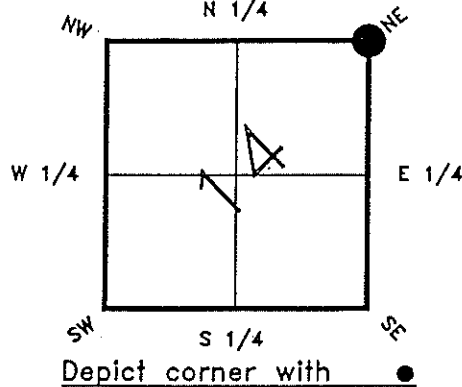
DOC. # 054816

FLORIDA DEPARTMENT OF ENVIRONMENTAL PROTECTION  
CERTIFIED CORNER RECORD

J21

CORNER DESCRIPTION:

NE corner of Section 14 ,  
Twp 42 S. , Rge 23 E. ,  
Tallahassee Base Meridian,  
CHARLOTTE County(s), Florida.



MONUMENTATION DESCRIPTION:

Describe original monument and accessories, or subsequent restoration. Give sources of information. (If no attempt was made to search for the original monument and accessories, this information is not necessary.)

Description of corner evidence  
FOUND 4"X4" CHARLOTTE COUNTY CONCRETE MONUMENT

NOV 22 1993

State method(s) to determine corner location (lost corners only):

SURVEY & MAPPING

HORIZONTAL POSITION INFORMATION ( if determined ):

Latitude 26°49'44.25986" Longitude 081°58'21.96499"  
Y(NORTHING-Ft.) 906999.402664 X(EASTING-Ft.) 665047.298004 Zone WEST  
Convergence 276,453.971 m Scale factor 0.99994123

Coordinate determination (circle one): Field traverse GPS

Horizontal datum (circle one): NAD27 NAD83(1986) NAD83(1990) other (explain)

Order of accuracy as defined in "Standards and Specifications for Geodetic Control Networks" published by the Federal Geodetic Control Committee (circle one):  
1st, 2nd, 3rd, class \_\_\_\_\_

or Minimum Technical Standards (Chapter 61G17-6, F.A.C.) ratio of closure for field data (example 1:10,000), \_\_\_\_\_. This does not specify an order of accuracy.

Control point(s) used for survey:

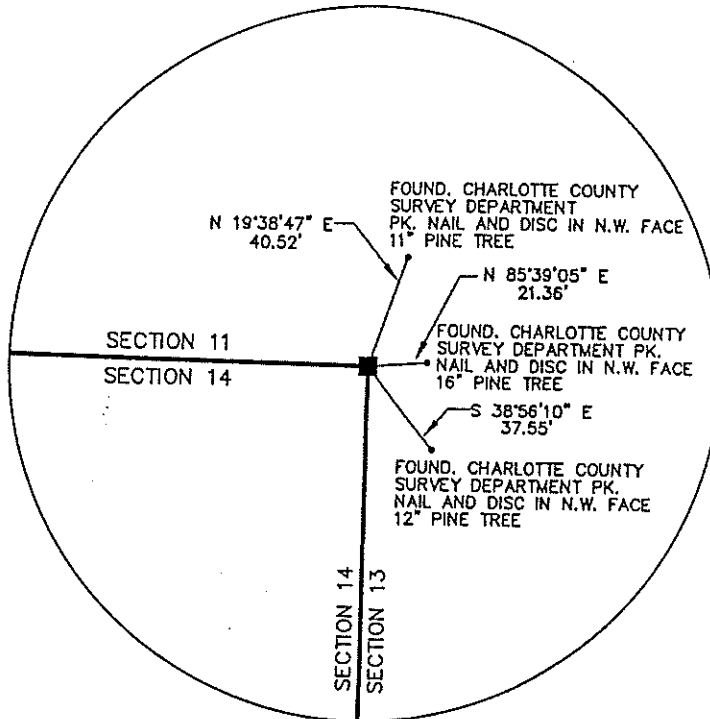
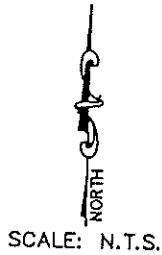
Comments:

4223J21

054816

DOC. #

SKETCH:



\*\*PLEASE COMPLETE IN BLACK INK OR TYPE\*\*

All bearings and distances must be from the corner to the witness. Indicate whether corner was found, set, or replaced and show north arrow.

REFERENCE MEASUREMENTS ( at least three vicinity references must be given below even if they appear on the above sketch ):

Description	Bearing	Distance
FD. CCSD PK NAIL AND DISC IN NW FACE 11" PINE	N 19° 38' 47" E	40.52'
FD. CCSD PK NAIL AND DISC IN NW FACE 16" PINE	N 85° 39' 05" E	21.36'
FD. CCSD PK NAIL AND DISC IN NW FACE 12" PINE	S 38° 56' 10" E	37.55'

CCSD=CHARLOTTE COUNTY SURVEY DEPARTMENT

SURVEYORS CERTIFICATE: I certify the monument and accessories indicated above were field located on OCTOBER, 19 19 95.

*James A. Smith*  
 SIGNATURE \_\_\_\_\_ FIRM NO. 5527  
 DATE 11-10-95  
 JOHNSON ENGINEERING, INC. 642  
 FIRM OR AGENCY \_\_\_\_\_ LB NO.  
 P.O. BOX 1550  
 ADDRESS \_\_\_\_\_  
 FORT MYERS FL 33902  
 CITY STATE

472

Completeness checked by: *D. Hunt*  
 Accepted and filed: 12-1-95  
 B.L.M. - I.D. 1411213 Date  
 D.E.P. USE ONLY

SEND TO:

Department of Environmental Protection  
 Bureau of Survey and Mapping  
 3900 Commonwealth Boulevard  
 Mall Station 105  
 Tallahassee, Florida 32399