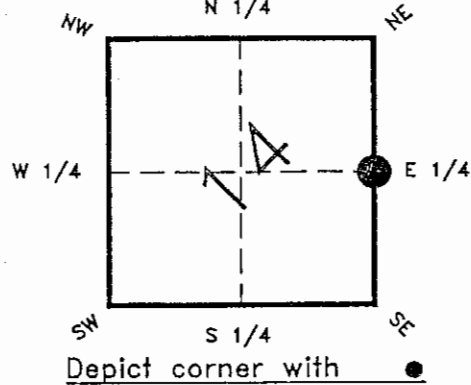


FLORIDA DEPARTMENT OF ENVIRONMENTAL PROTECTION  
CERTIFIED CORNER RECORD

L 21

CORNER DESCRIPTION:

EAST 1/4 corner of Section 14,  
Twp 42 S., Rge 23 E.,  
Tallahassee Base Meridian,  
CHARLOTTE County(s), Florida.



MONUMENTATION DESCRIPTION:

Describe original monument and accessories, or subsequent restoration. Give sources of information. (If no attempt was made to search for the original monument and accessories, this information is not necessary.)

Description of corner evidence set:  
SET 4"X4" CONCRETE MONUMENT WITH  
ALUMINUM DISC LB #642

NOV 22 1993  
SURVEY & MAPPING

State method(s) to determine corner location (lost corners only):  
SINGLE PROPORTION

HORIZONTAL POSITION INFORMATION ( if determined ):

Latitude \_\_\_\_\_ Longitude \_\_\_\_\_  
Y(NORTHING-Ft.) 275624.974 904279.601832 X(EASTING-Ft.) 202703.910 665037.744502 Zone WEST  
Convergence \_\_\_\_\_ Scale factor 0.99994123

Coordinate determination (circle one): Field traverse GPS  
Horizontal datum (circle one): NAD27 NAD83(1986) NAD83(1990) other (explain)

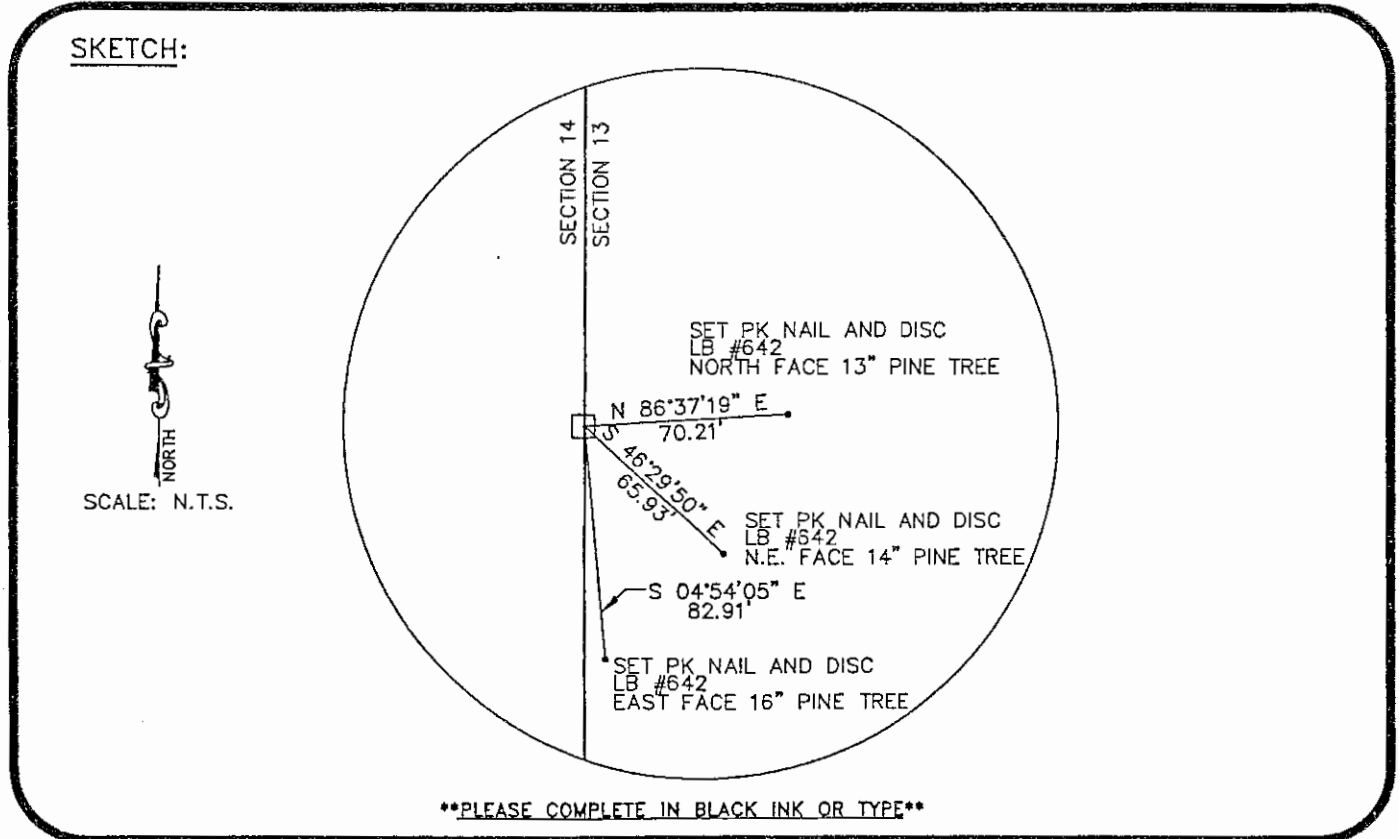
Order of accuracy as defined in "Standards and Specifications for Geodetic Control Networks" published by the Federal Geodetic Control Committee (circle one):  
1st, 2nd, 3rd, class \_\_\_\_\_,

or Minimum Technical Standards (Chapter 61G17-6, F.A.C.) ratio of closure for field data (example 1:10,000), \_\_\_\_\_ . This does not specify an order of accuracy.

Control point(s) used for survey:

Comments:

SKETCH:



\*\*PLEASE COMPLETE IN BLACK INK OR TYPE\*\*

All bearings and distances must be from the corner to the witness. Indicate whether corner was found, set, or replaced and show north arrow.

REFERENCE MEASUREMENTS ( at least three vicinity references must be given below even if they appear on the above sketch ):

Description	Bearing	Distance
SET PK NAIL AND DISC LB #642	N 86° 37' 19" E	70.21'
SET PK NAIL AND DISC LB #642	S 46° 29' 50" E	65.93'
SET PK NAIL AND DISC LB #642	S 04° 54' 05" E	82.91'

SURVEYORS CERTIFICATE: I certify the monument and accessories indicated above were set on OCTOBER, 20 19 95.

James A. Surch 5527  
 SIGNATURE FIRM NO.  
11-16-95  
 DATE  
JOHNSON ENGINEERING, INC. 642  
 FIRM OR AGENCY LB NO.  
P.O. BOX 1550  
 ADDRESS  
FORT MYERS FL. 33902  
 CITY STATE

472

Completeness checked by: [Signature]  
 Accepted and filed: 12-1-95  
 Date  
 B.L.M. - I.D. 1408CL13 D.E.P. USE ONLY

SEND TO:  
 Department of Environmental Protection  
 Bureau of Survey and Mapping  
 3900 Commonwealth Boulevard  
 Mall Station 105  
 Tallahassee, Florida 32399