

4223N05

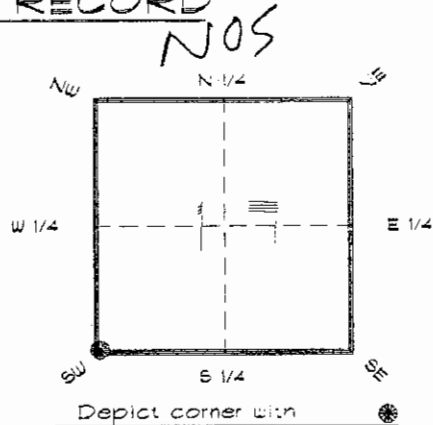
DOC. #

051028

FLORIDA DEPARTMENT OF ENVIRONMENTAL PROTECTION  
CERTIFIED CORNER RECORD

CORNER DESCRIPTION:

S. W. corner of Section 17,  
Twp 42 S., Rge 23 E.,  
Tallahassee Base Meridian,  
CHARLOTTE County(s), Florida.



MONUMENTATION DESCRIPTION:

Describe original monument and accessories, or subsequent restoration. Give sources of information. (If no attempt was made to search for the original monument and accessories, this information is not necessary.)

Description of corner evidence found:

CONCRETE MONUMENT

State method(s) to determine corner location (lost corners only):

HORIZONTAL POSITION INFORMATION ( if determined ):

Latitude 26°48'52.08723" N Longitude 82°02'16.46798" W  
Y(Northing) 274848.570 m X(Easting) 196231.535 m Zone FLW  
Convergence -0°01'01.561" Scale factor 0.99994135

Coordinate determination (circle one): Field traverse GPS

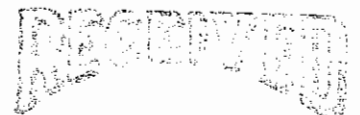
Horizontal datum (circle one): NAD27 NAD83(1986) NAD83(1990) other (explain)

Order of accuracy as defined in Standards and Specifications for Geodetic Control Networks published by the Federal Geodetic Control Committee (circle one):  
1st, 2nd, 3rd class

or Minimum Technical Standards (Chapter 6IG17, F.A.C.) ratio of closure for field data (example 1:10,000), \_\_\_\_\_ . This does not specify an order of accuracy.

Control point(s) used for survey: CHARLOTTE COUNTY HORIZONTAL CONTROL NETWORK INCLUDES HAYOLINE 2, PLACIDA 2, W260, PUNTPORT, & FLGPS 58 AS 5 ORDER STATIONS.

Comments:



FEB 20 1995

SURVEY & MAPPING

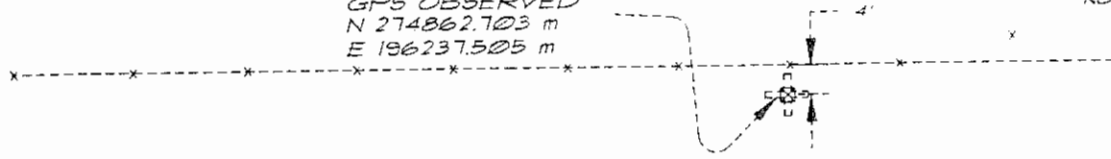
4223N05

DOC. #

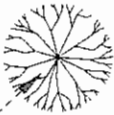
051028

SKETCH:

AERIAL TARGET  
SET REFERENCE  
CONC. MONUMENT  
GPS OBSERVED  
N 274862.703 m  
E 196237.505 m



DISK 0685 IN  
12" PINE



S. W. COR. SEC. 17 42/23  
FOUND CONC. MONUMENT

DISK 0684 IN  
16" PINE



DISK 0683 IN  
6" PINE

BASIS OF BEARING SOLAR OBSERVATION

REFER: FB 285/66

REFERENCE MEASUREMENTS

Description	Bearing	Distance
DISK 0683 IN 6" PINE	S 27°33'52" E	12.09'
DISK 0684 IN 16" PINE	S 65°29'02" W	37.00'
DISK 0685 IN 12" PINE	N 35°43'56" W	22.12'
SET REF. CONC. MON.	N 22°53'00" E	50.34'
	( N 22°54'01" E GRID )	

SURVEYORS CERTIFICATE: I certify the monument and accessories indicated above were field located on APRIL 22, 1994

*R. Ross*  
SIGNATURE

PLS 4260

UPDATED 2/8/95

2-15-95  
DATE

CHARLOTTE COUNTY SURVEY DEPT.  
FIRM OR AGENCY

1000 FLORIDA STREET  
ADDRESS

PUNTA GORDA, FLORIDA 33950  
CITY STATE

473  
PUNTA  
GORDA  
SE



Completeness checked by: *R. Ross*  
 Accepted and filed: *3-17-95*  
 B.L.M. - ID. 19181720 Date  
 D.E.P. USE ONLY

SEND TO:

Department of Environmental Protection  
Bureau of Survey and Mapping  
3900 Commonwealth Boulevard  
Mail Station 105  
Tallahassee, Florida 32399