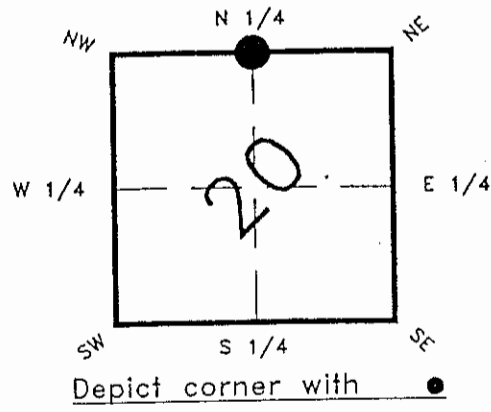


FLORIDA DEPARTMENT OF ENVIRONMENTAL PROTECTION  
CERTIFIED CORNER RECORD

207

CORNER DESCRIPTION:

NORTH 1/4 corner of Section 20,  
Twp 42 S., Rge 23 E.,  
Tallahassee Base Meridian,  
CHARLOTTE County(s), Florida.



MONUMENTATION DESCRIPTION:

Describe original monument and accessories, or subsequent restoration. Give sources of information. (If no attempt was made to search for the original monument and accessories, this information is not necessary.)

Description of corner evidence found:

FOUND 4"X4" CONCRETE MONUMENT

State method(s) to determine corner location (lost corners only):

HORIZONTAL POSITION INFORMATION ( if determined ):

Latitude 26°48'51.91658" N. Longitude 82°01'46.96530" E  
Y(NORTHING-Ft.) 901714.406381 X(EASTING-Ft.) 646475.835815 Zone FL. WEST  
Convergence -0°00'48.252" Scale factor 0.99994129

Coordinate determination (circle one): Field traverse GPS

Horizontal datum (circle one): NAD27 NAD83(1986) NAD83(1990) other (explain)

Order of accuracy as defined in "Standards and Specifications for Geodetic Control Networks" published by the Federal Geodetic Control Committee (circle one):  
1st, 2nd, 3rd, class 2,

or Minimum Technical Standards (Chapter 21HH-6, F.A.C.) ratio of closure for field data (example 1:10,000), \_\_\_\_\_ . This does not specify an order of accuracy.

Control point(s) used for survey:

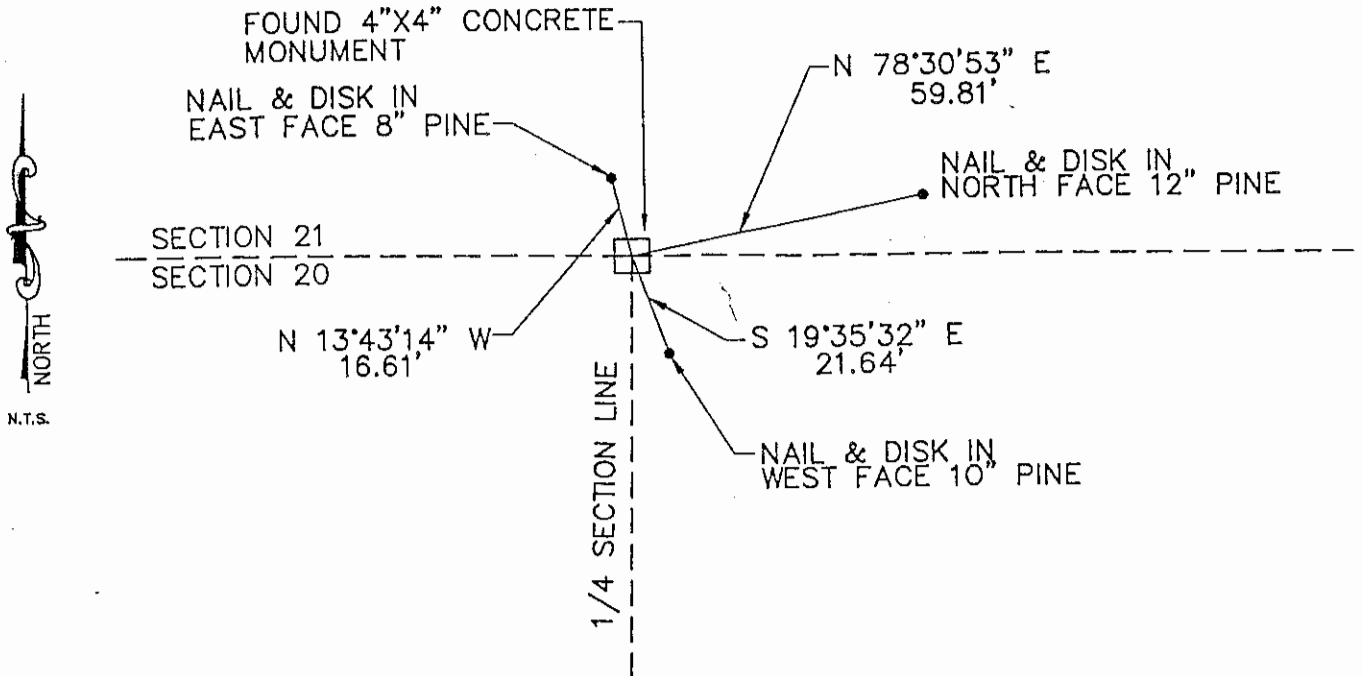
Comments:

RECEIVED

MAY 15 1995

SURVEY & MAPPING  
DEP 63-001(16)  
REV: 10/18/93  
PAGE 1 OF 2

SKETCH:



\*\*PLEASE COMPLETE IN BLACK INK OR TYPE\*\*

All bearings and distances must be from the corner to the witness. Indicate whether corner was found, set, or replaced and show north arrow.

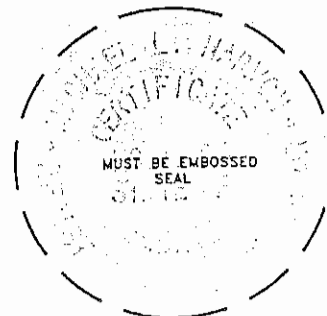
REFERENCE MEASUREMENTS ( at least three vicinity references must be given below even if they appear on the above sketch ):

Description	Bearing	Distance
NAIL & DISK IN EAST FACE 8" PINE	N 13°43'14" W	16.61'
NAIL & DISK IN NORTH FACE 12" PINE	N 78°30'53" E	59.81'
NAIL & DISK IN WEST FACE 10" PINE	S 19°35'32" E	21.64'

SURVEYORS CERTIFICATE: I certify the monument and accessories indicated above were field located on MAY 9, 19 95.

MICHAEL L. HARMON 2904  
 SIGNATURE FIRM NO.  
*Michael L. Harmon* 5-9-95  
 DATE  
 JOHNSON ENGINEERING, INC. 642  
 FIRM OR AGENCY LB NO.  
 P.O. BOX 1550  
 ADDRESS  
 FORT MYERS FL. 33902  
 CITY STATE

473  
 Punta Gorda  
 SE.



Completeness checked by: B. Smith  
 Accepted and filed: 6-1-95  
 Date  
 B.L.M. - I.D. 20CL6017 D.E.P. USE ONLY

SEND TO:

Department of Environmental Protection  
 Bureau of Survey and Mapping  
 3900 Commonwealth Boulevard  
 Mail Station 105  
 Tallahassee, Florida 32399