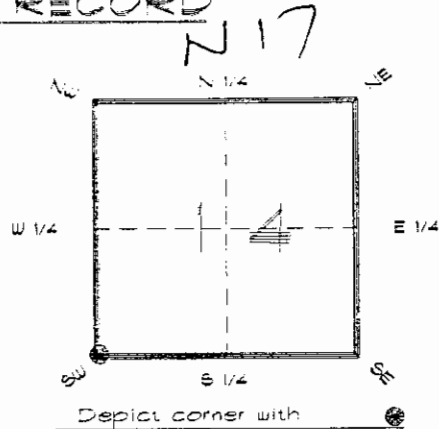


4223N17

FLORIDA DEPARTMENT OF ENVIRONMENTAL PROTECTION
CERTIFIED CORNER RECORD

CORNER DESCRIPTION:

S. W. corner of Section 14
Twp 42 S., Rge 23 E.
Tallahassee Base Meridian,
CHARLOTTE County(s), Florida.



MONUMENTATION DESCRIPTION:

Describe original monument and accessories, or subsequent restoration. Give sources of information. (If no attempt was made to search for the original monument and accessories, this information is not necessary.)

Description of corner evidence found:

L'WOOD POST, REPLACED WITH CONCRETE MONUMENT

State method(s) to determine corner location (lost corners only):

HORIZONTAL POSITION INFORMATION (if determined):

Latitude 26°48'50.98619" N Longitude 81°59'17.53990" W
Y(Northing) 274814.176 m X(Easting) 201172.508 m Zone FLW
Convergence 0°00'19.154" Scale factor 0.99994119

Coordinate determination (circle one): (Field traverse) GPS

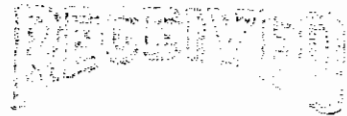
Horizontal datum (circle one): NAD27 NAD83(1986) (NAD83(1990)) other (explain)

Order of accuracy as defined in Standards and Specifications for Geodetic Control Networks published by the Federal Geodetic Control Committee (circle one):
1st, 2nd, (3rd) class 1

or Minimum Technical Standards (Chapter 61G17, F.A.C.) ratio of closure for field data (example 1:10,000), . This does not specify an order of accuracy.

Control point(s) used for survey: CHARLOTTE COUNTY HORIZONTAL CONTROL NETWORK INCLUDES HAYOLINE 2, PLACIDA 2, W260, PUNTPORT, 4 FLGPS 58 AS B ORDER STATIONS.

Comments:

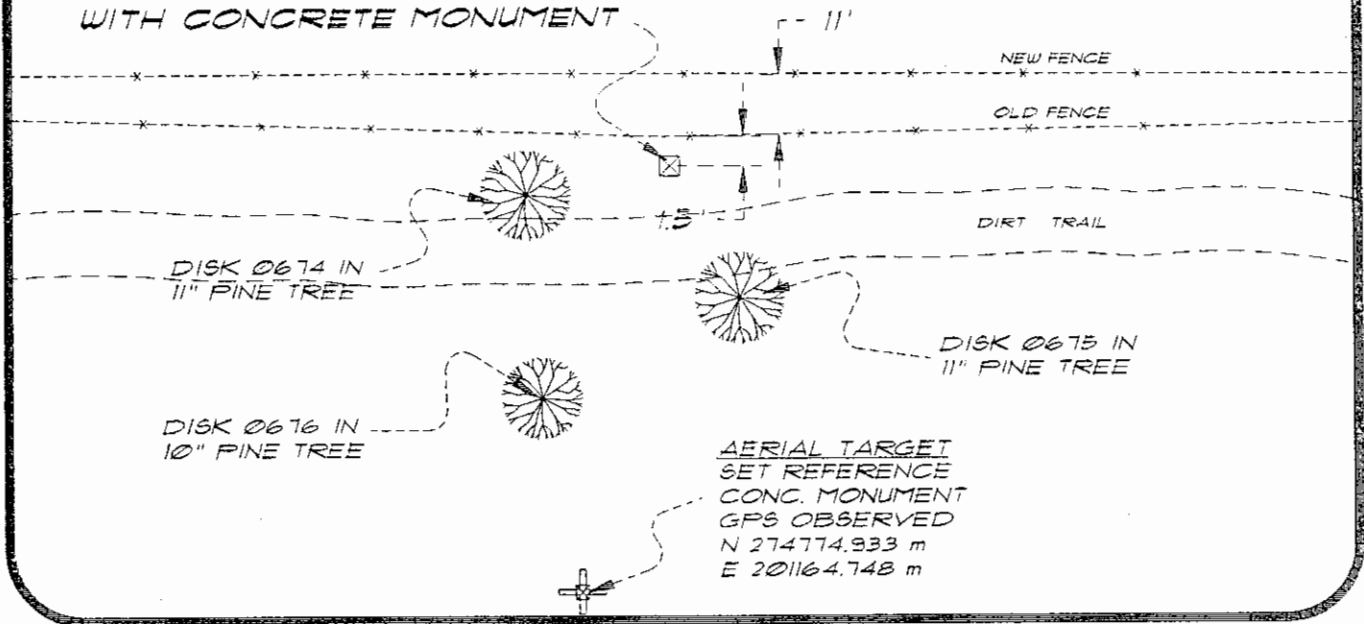


FEB 20 1995

SURVEY & MAPPING

SKETCH:

S. W. COR. SEC. 14 42/23
FOUND L'WOOD POST, REPLACED
WITH CONCRETE MONUMENT



BASIS OF BEARING SOLAR OBSERVATION

REFER: FB 285/61

REFERENCE MEASUREMENTS

Description	Bearing	Distance
DISK 0674 IN 11" PINE	S 88°11'56" W	19.51'
DISK 0675 IN 11" PINE	S 28°21'42" E	25.92'
DISK 0676 IN 10" PINE	S 17°05'48" W	56.65'
SET REF. CONC. MON.	S 11°11'29" W	131.25'

(S 11°11'10" W GRID)

SURVEYORS CERTIFICATE: I certify the monument and accessories indicated above were field located on May 5, 1993

R. Ross
SIGNATURE

PLS 4260

UPDATED 2/14/95

2-15-95
DATE

CHARLOTTE COUNTY SURVEY DEPT.

FIRM OR AGENCY

7000 FLORIDA STREET

ADDRESS

PUNTA GORDA, FLORIDA 33950

CITY

STATE



SEND TO:

Department of Environmental Protection
Bureau of Survey and Mapping
3900 Commonwealth Boulevard
Mail Station 105
Tallahassee, Florida 32399

Completeness checked by: *R. Ross*
Accepted and filed: *3-11-95* Date
BLM. - ID. 22151423 D.E.P. USE ONLY