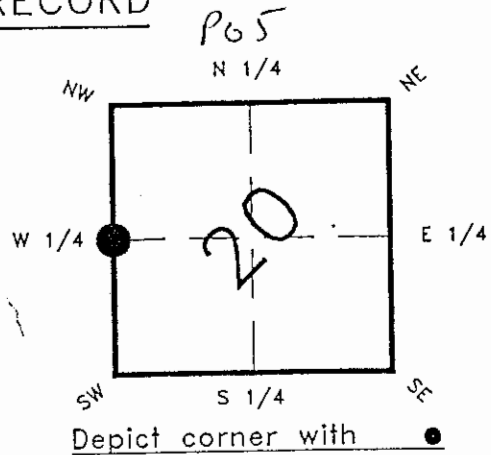


FLORIDA DEPARTMENT OF ENVIRONMENTAL PROTECTION
CERTIFIED CORNER RECORD

CORNER DESCRIPTION:

WEST 1/4 corner of Section 20,
Twp 42 S., Rge 23 E.,
Tallahassee Base Meridian,
CHARLOTTE County(s), Florida.



MONUMENTATION DESCRIPTION:

Describe original monument and accessories, or subsequent restoration. Give sources of information. (If no attempt was made to search for the original monument and accessories, this information is not necessary.)

Description of corner evidence found:

FOUND 4"X4" CONCRETE MONUMENT

State method(s) to determine corner location (lost corners only):

HORIZONTAL POSITION INFORMATION (if determined):

Latitude 26° 48' 25.68303" Longitude 82° 02' 16.66102"
Y(NORTHING-Ft.) 899066.287303 X(EASTING-Ft.) 643784.673671 Zone FL. WEST
Convergence -0° 01' 01.63259" Scale factor 0.99994135

Coordinate determination (circle one): Field traverse GPS
Horizontal datum (circle one): NAD27 NAD83(1986) NAD83(1990) other (explain)

Order of accuracy as defined in "Standards and Specifications for Geodetic Control Networks" published by the Federal Geodetic Control Committee (circle one):
1st, 2nd, 3rd, class 2,

or Minimum Technical Standards (Chapter 21HH-6, F.A.C.) ratio of closure for field data (example 1:10,000), _____ . This does not specify an order of accuracy.

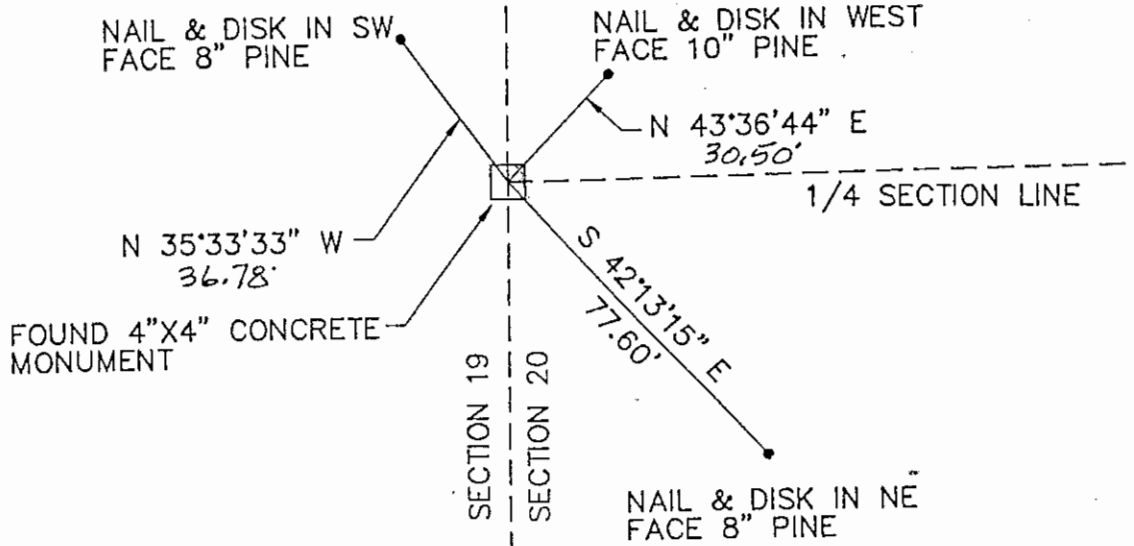
Control point(s) used for survey:

Comments:

RECEIVED
MAY 15 1995

SURVEY & MAPPING
DEP 63-001(16)
REV: 10/18/93
PAGE 1 OF 2

SKETCH:



PLEASE COMPLETE IN BLACK INK OR TYPE

All bearings and distances must be from the corner to the witness. Indicate whether corner was found, set, or replaced and show north arrow.

REFERENCE MEASUREMENTS (at least three vicinity references must be given below even if they appear on the above sketch):

Description	Bearing	Distance
NAIL & DISK IN SW FACE 8" PINE	N 35°33'33" W	36.78'
NAIL & DISK IN WEST FACE 10" PINE	N 43°36'44" E	30.50'
NAIL & DISK IN NE FACE 8" PINE	S 42°13'15" E	77.60'

SURVEYORS CERTIFICATE: I certify the monument and accessories indicated above were field located on MAY 9, 19 95.

MICHAEL L. HARMON 2904

Michael L. Harmon FIRM NO. 5-9-95

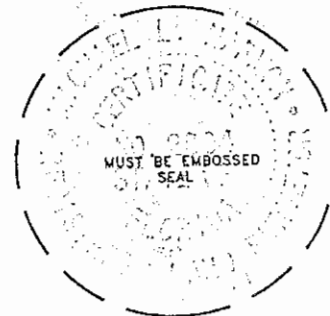
JOHNSON ENGINEERING, INC. DATE 6-11-95

P.O. BOX 1550 FIRM OR AGENCY 642

FORT MYERS ADDRESS FL. 33902

CITY STATE

473



Completeness checked by: B. Hunt

Accepted and filed: 6-11-95 Date

B.L.M. - I.D. 1900 0020 D.E.P. USE ONLY

SEND TO:

Department of Environmental Protection
 Bureau of Survey and Mapping
 3900 Commonwealth Boulevard
 Mall Station 105
 Tallahassee, Florida 32399