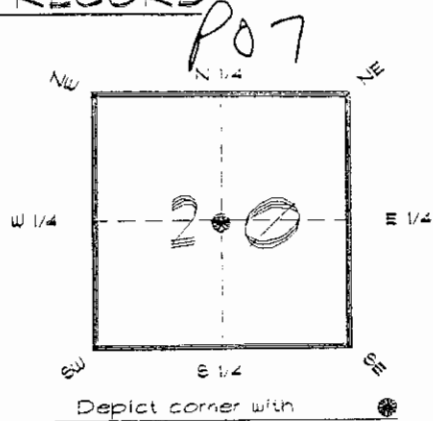


4223F07

FLORIDA DEPARTMENT OF ENVIRONMENTAL PROTECTION
CERTIFIED CORNER RECORD

CORNER DESCRIPTION:

CENTER corner of Section 20 ,
Twp 42 S. , Rge 23 E. ,
Tallahassee Base Meridian,
CHARLOTTE County(s), Florida.



MONUMENTATION DESCRIPTION:

Describe original monument and accessories, or subsequent restoration. Give sources of information. (If no attempt was made to search for the original monument and accessories, this information is not necessary.)

Description of corner evidence found:

CONCRETE MONUMENT

State method(s) to determine corner location (lost corners only):

HORIZONTAL POSITION INFORMATION (if determined):

Latitude 26°48'25.95954" N Longitude 82°01'47.04693" W
Y(Northing) 274044.244 m X(Easting) 197043.788 m Zone FLW
Convergence -0°00'48.277" Scale factor 0.99994128

Coordinate determination (circle one): Field traverse GPS

Horizontal datum (circle one): NAD27 NAD83(1986) NAD83(1990) other (explain)

Order of accuracy as defined in Standards and Specifications for Geodetic Control Networks published by the Federal Geodetic Control Committee (circle one):
1st, 2nd, 3rd, class _____

or Minimum Technical Standards (Chapter 6IG17, F.A.C.) ratio of closure for field data (example 1:10,000), _____ . This does not specify an order of accuracy.

Control point(s) used for survey: CHARLOTTE COUNTY HORIZONTAL CONTROL NETWORK INCLUDES HAYOLINE 2, FLACIDA 2, W260, PUNTPORT, & FLGPS 58 AS B ORDER STATIONS.

Comments:



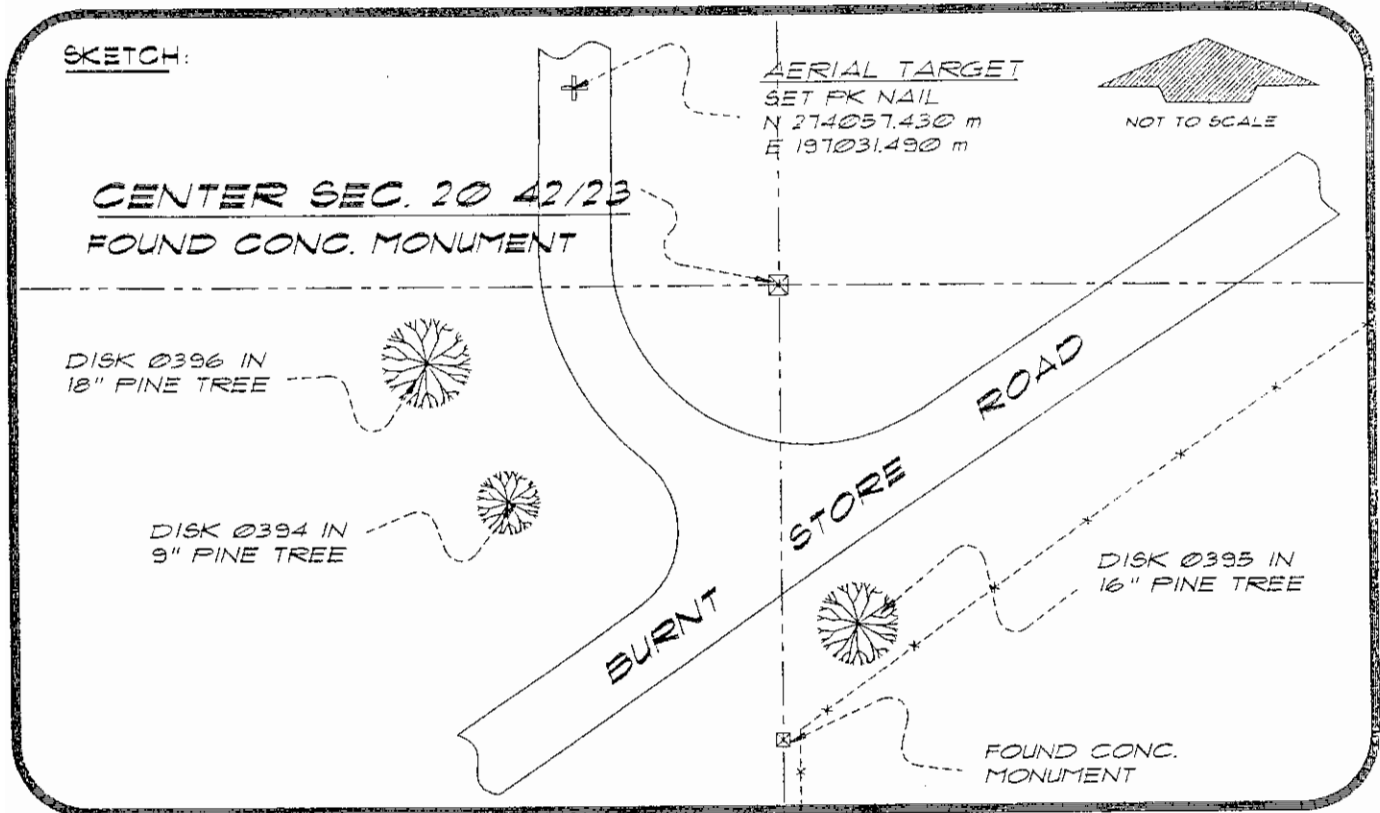
FEB 20 1995

SURVEY & MAPPING

051030

4223P07

DOC. #



BASIS OF BEARING SOLAR OBSERVATION REFER: FB 285/41

REFERENCE MEASUREMENTS

Description	Bearing	Distance
DISK 0394 IN 9" PINE	S 56°17'14" W	80.94'
DISK 0396 IN 18" PINE	S 81°54'41" W	90.79'
DISK 0395 IN 16" PINE	S 09°45'24" E	115.10'
FOUND CONC. MON.	S 01°23'56" W	149.67'
AERIAL TARGET	N 43°01'08" W	59.16'

SURVEYORS CERTIFICATE: I certify the monument and accessories indicated above were field located on FEBRUARY 24, 1994

R. P. Ross
SIGNATURE

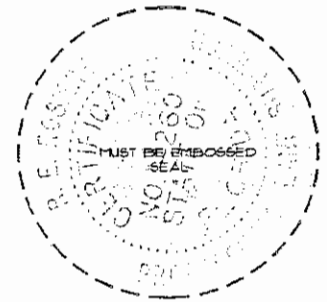
PLS 4260

UPDATED 2/7/95

2-15-95
DATE

CHARLOTTE COUNTY SURVEY DEPT.
FIRM OR AGENCY
7000 FLORIDA STREET
ADDRESS
PUNTA GORDA, FLORIDA 33950
CITY STATE

473



Completeness checked by: *R. P. Ross*
Accepted and filed: *3-1-95* Date
B.L.M. - ID. 20CLL20 DNR. USE ONLY

SEND TO:
Department of Environmental Protection
Bureau of Survey and Mapping
3900 Commonwealth Boulevard
Mail Station 105
Tallahassee, Florida 32399