

4223R05

DOC. #

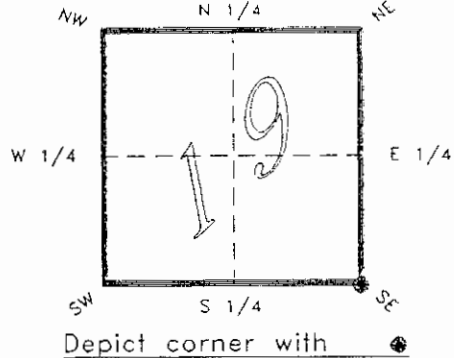
051029

FLORIDA DEPARTMENT OF NATURAL RESOURCES  
CERTIFIED CORNER RECORD

R05

CORNER DESCRIPTION:

S.E. corner of Section 19,  
Twp 42 S., Rge 23 E.,  
Tallahassee Base Meridian,  
CHARLOTTE County(s), Florida.



MONUMENTATION DESCRIPTION:

Describe original monument and accessories, or subsequent restoration. Give sources of information. (If no attempt was made to search for the original monument and accessories, this information is not necessary.)

Description of corner evidence found:

CONCRETE MONUMENT

State method(s) to determine corner location (lost corners only):

RECEIVED

JAN 31 1995

SURVEY & MAPPING

HORIZONTAL POSITION INFORMATION ( if determined ):

Latitude 26°47'59.28053" N Longitude 82°02'16.84536" W  
Y(Northing) 273223.388 m X(Easting) 196220.627 m Zone FLW  
Convergence -0°01'01.700" Scale factor 0.99994135

Coordinate determination (circle one): Field traverse GPS

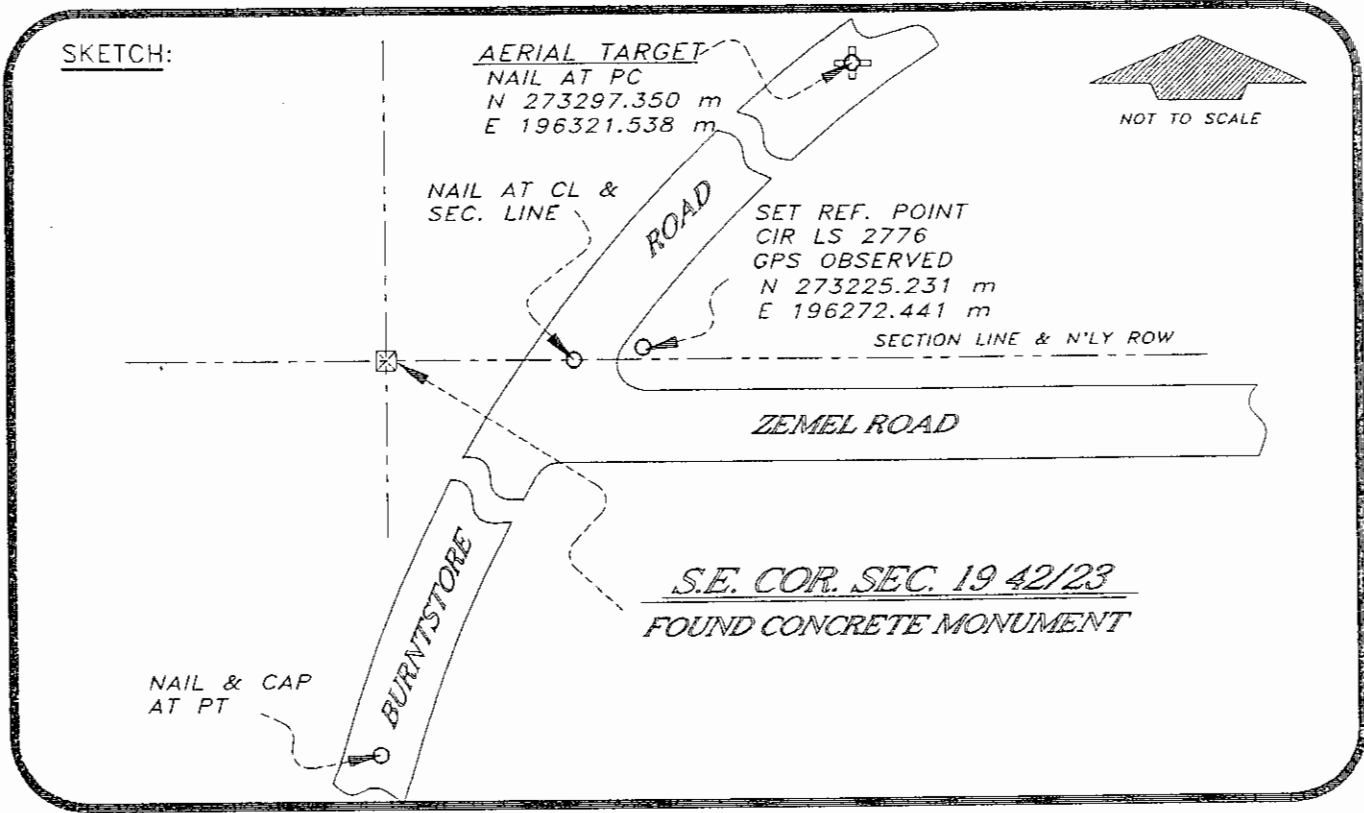
Horizontal datum (circle one): NAD27 NAD83(1986) NAD83(1990) other (explain)

Order of accuracy as defined in "Standards and Specifications for Geodetic Control Networks" published by the Federal Geodetic Control Committee (circle one):  
1st, 2nd, 3rd, class 1

or Minimum Technical Standards (Chapter 21HH-6, F.A.C.) ratio of closure for field data (example 1:10,000), . This does not specify an order of accuracy.

Control point(s) used for survey: CHARLOTTE COUNTY HORIZONTAL CONTROL NETWORK INCLUDES HAVOLINE 2, PLACIDA 2, W260, PUNTAPORT, & FLGPS 58 AS B ORDER STATIONS.

Comments:



**BASIS OF BEARING SOLAR OBSERVATION** REFER FB 292/75  
All bearings and distances must be from the corner to the witness. Indicate whether corner was found, set, or replaced and show north arrow.

**REFERENCE MEASUREMENTS** ( at least three vicinity references must be given below even if they appear on the above sketch ):

Description	Bearing	Distance
NAIL & CAP AT PT	S 00°02'49" W	560.55'
NAIL AT PC	N 53°44'36" E	410.50'
NAIL AT CL ON SEC. LINE	N 88°28'29" E	148.53
REF. PT. CIR LS 2776	N 87°56'45" E	170.11'
	( N 87°57'46" E GRID )	

**SURVEYORS CERTIFICATE:** I certify the monument and accessories indicated above were field located on AUGUST 17, 19 93.

UPDATED 1/24/95

*[Signature]*  
SIGNATURE PLS 4260

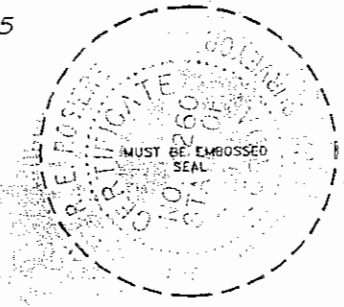
1/30/95  
DATE

CHARLOTTE COUNTY SURVEY DEPT.  
FIRM OR AGENCY

7000 FLORIDA STREET  
ADDRESS

PUNTA GORDA, FLA. 33950  
CITY STATE

473



Completeness checked by: *[Signature]*

Accepted and filed: 3-1-93 Date

B.L.M. - I.D. 30192029 D.N.R. USE ONLY

SEND TO:  
Department of Natural Resources  
Bureau of Survey and Mapping  
3900 Commonwealth Boulevard  
Mail Station 105  
Tallahassee, Florida 32399

DNR 53-001(16)  
REV. 7/16/92  
PAGE 2 OF 2