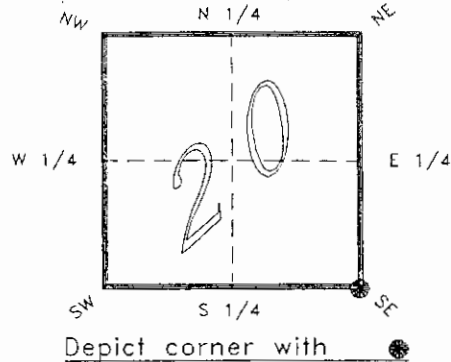


FLORIDA DEPARTMENT OF ENVIRONMENTAL PROTECTION
CERTIFIED CORNER RECORD

R09

CORNER DESCRIPTION:

S.E. corner of Section 20 ,
Twp 42 S. , Rge 23 E. ,
Tallahassee Base Meridian,
CHARLOTTE County(s), Florida.

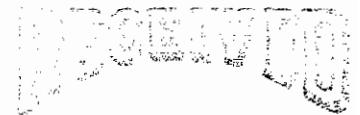


MONUMENTATION DESCRIPTION:

Describe original monument and accessories, or subsequent restoration. Give sources of information. (If no attempt was made to search for the original monument and accessories, this information is not necessary.)

Description of corner evidence found:

CONCRETE MONUMENT



JAN 31 1995

State method(s) to determine corner location (lost corners only):

SURVEY & MAPPING

HORIZONTAL POSITION INFORMATION (if determined):

Latitude 26°48'00.70866" N Longitude 82°01'18.68893" W
Y(Northing) 273266.962 m X(Easting) 197826.790 m Zone FLW
Convergence -0°00'35.479" Scale factor 0.99994123

Coordinate determination (circle one):

Field traverse GPS

Horizontal datum (circle one): NAD27 NAD83(1986) NAD83(1990) other (explain)

Order of accuracy as defined in "Standards and Specifications for Geodetic Control Networks" published by the Federal Geodetic Control Committee (circle one):
1st, 2nd, 3rd, class 1 ,

or Minimum Technical Standards (Chapter 21HH-6, F.A.C.) ratio of closure for field data (example 1:10,000), _____ . This does not specify an order of accuracy.

Control point(s) used for survey: CHARLOTTE COUNTY HORIZONTAL CONTROL NETWORK INCLUDES HAVOLINE 2, PLACIDA 2, W260, PUNTPORT, & FLGPS 58 AS B ORDER STATIONS.

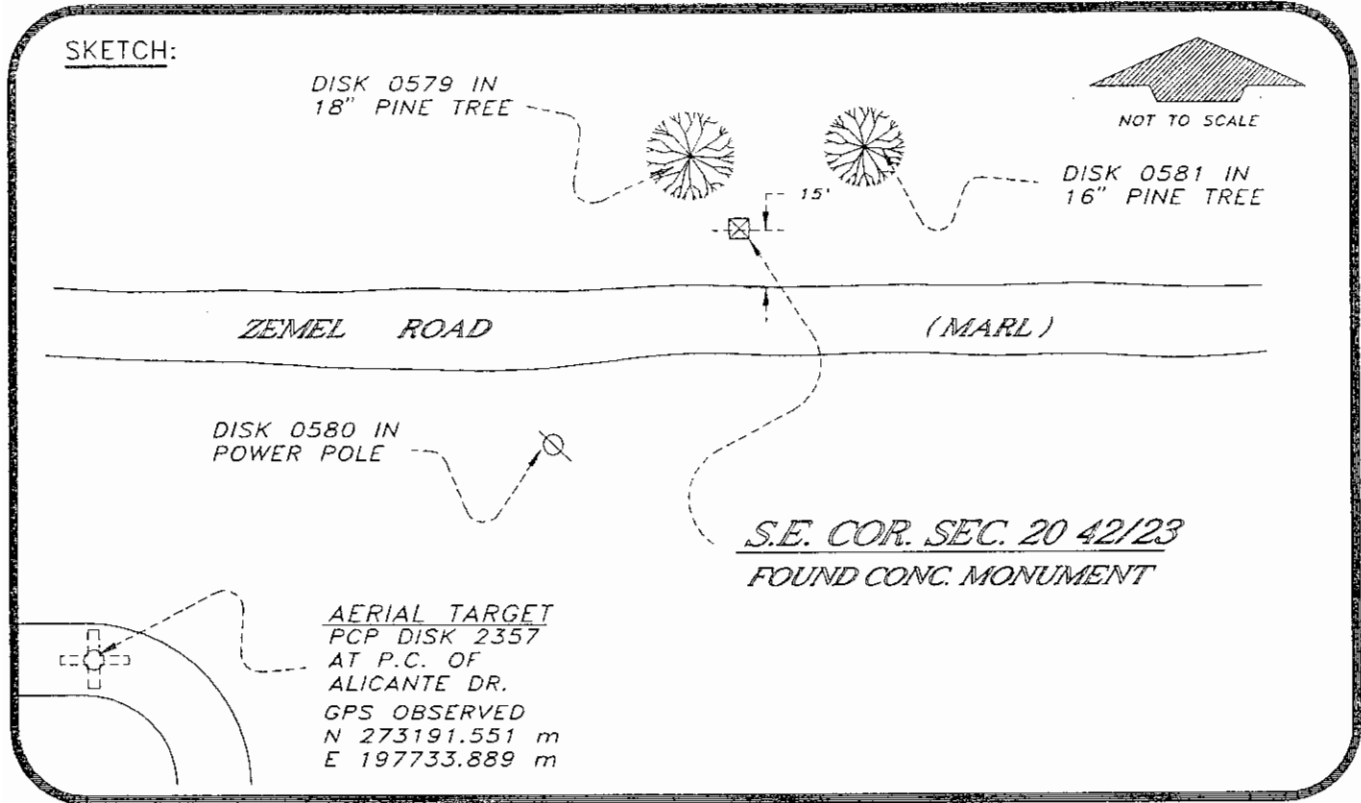
Comments:

4223R09

DOC. #

051032

SKETCH:



BASIS OF BEARING SOLAR OBSERVATION
SET SURVEY MARKER POST 3' N'LY

REFER: FB 285/18

REFERENCE MEASUREMENTS

Description	Bearing	Distance
DISK 0579 IN 18" PINE TREE	N 13°22'50" W	16.68'
DISK 0581 IN 16" PINE TREE	N 56°50'51" E	40.65'
DISK 0580 IN POWER POLE	S 46°32'20" W	81.80'
PCP DISK 2357 AT P.C.	S 50°55'20" W	392.59'
	(S 50°55'57" W GRID)	

SURVEYORS CERTIFICATE: I certify the monument and accessories indicated above were field located on JANUARY 20, 19 94.

R. P. Ross
SIGNATURE

PLS 4260

UPDATED 1/24/95

1/30/95
DATE

CHARLOTTE COUNTY SURVEY DEPT.

FIRM OR AGENCY

7000 FLORIDA STREET

ADDRESS

PUNTA GORDA,

FLA.

33950

CITY

STATE

473



Completeness checked by: *[Signature]*
 Accepted and filed: *[Signature]*
 B.L.M. - I.D. 29202128 Date
 D.N.R. USE ONLY

SEND TO:

Department of Environmental Protection
Bureau of Survey and Mapping
3900 Commonwealth Boulevard
Mail Station 105
Tallahassee, Florida 32399