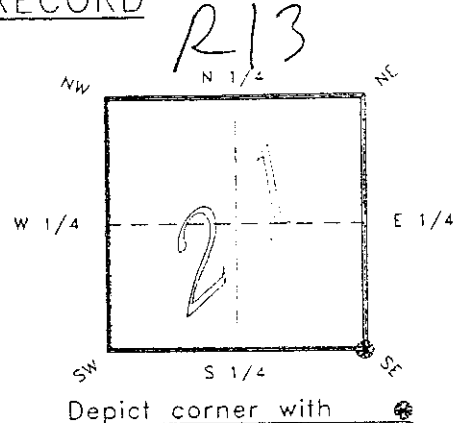


4223R13

FLORIDA DEPARTMENT OF ENVIRONMENTAL PROTECTION  
CERTIFIED CORNER RECORD

CORNER DESCRIPTION:

S.E. corner of Section 21 ,  
Twp 42 S. , Rge 23 E. ,  
Tallahassee Base Meridian,  
CHARLOTTE County(s), Florida.



MONUMENTATION DESCRIPTION:

Describe original monument and accessories, or subsequent restoration. Give sources of information. (If no attempt was made to search for the original monument and accessories, this information is not necessary.)

Description of corner evidence found:

CONCRETE MONUMENT

State method(s) to determine corner location (lost corners only):

HORIZONTAL POSITION INFORMATION ( if determined ):

Latitude 26°48'00.68561" N Longitude 82°00'19.93947" W  
Y(Northing) 273266.078 m X(Easting) 199449.317 m Zone FLW  
Convergence -0°00'08.990" Scale factor 0.99994118

Coordinate determination (circle one): Field traverse GPS

Horizontal datum (circle one): NAD27 NAD83(1986) NAD83(1990) other (explain)

Order of accuracy as defined in "Standards and Specifications for Geodetic Control Networks" published by the Federal Geodetic Control Committee (circle one):  
1st, 2nd, 3rd, class 1 ,

or Minimum Technical Standards (Chapter 21HH-6, F.A.C.) ratio of closure for field data (example 1:10,000), \_\_\_\_\_ . This does not specify an order of accuracy.

Control point(s) used for survey: CHARLOTTE COUNTY HORIZONTAL CONTROL NETWORK INCLUDES HAVOLINE 2, PLACIDA 2, W260, PUNTPORT, & FLGPS 58 AS B ORDER STATIONS.

Comments:



FEB 20 1990

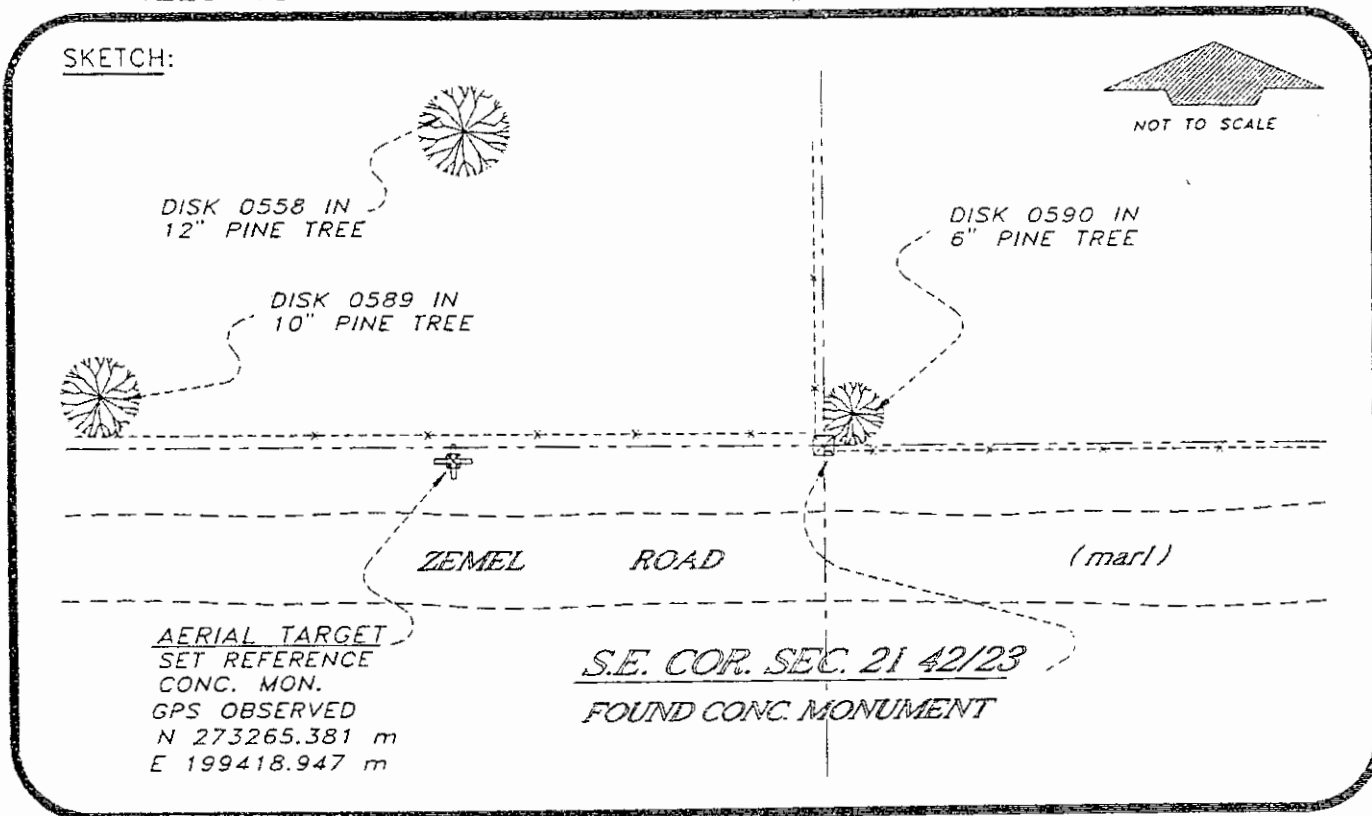
SURVEY & MAPPING

051034

4223R13

DOC. #

SKETCH:



BASIS OF BEARING SOLAR OBSERVATION

REFER: FB 285/22

REFERENCE MEASUREMENTS

Description	Bearing	Distance
DISK 0589 IN 10" PINE	N 86°38'15" W	194.35'
DISK 0588 IN 12" PINE	N 42°37'34" W	101.97'
DISK 0590 IN 6" PINE	N 32°46'32" E	12.49'
SET REF. CONC. MON.	S 88°41'02" W	99.67'

SURVEYORS CERTIFICATE: I certify the monument and accessories indicated above were field located on JANUARY 27, 19 93.

*R. Rose*

SIGNATURE

PLS 4260

UPDATED 2/9/95

2-15-95

DATE

CHARLOTTE COUNTY SURVEY DEPT.

FIRM OR AGENCY

7000 FLORIDA STREET

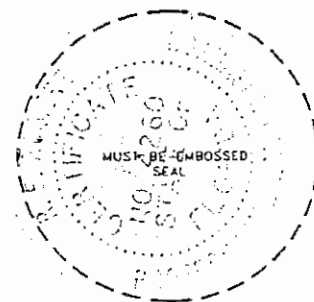
ADDRESS

PUNTA GORDA, FLA. 33950

CITY

STATE

473



SEND TO:

Completeness checked by: *R. Rose*  
 Accepted and filed: 3-1-95 Date  
 B.L.M. - I.D. 28212227 D.N.R. USE ONLY

Department of Environmental Protection  
 Bureau of Survey and Mapping  
 3900 Commonwealth Boulevard  
 Mail Station 105  
 Tallahassee, Florida 32399