

4223R17

DOC. #

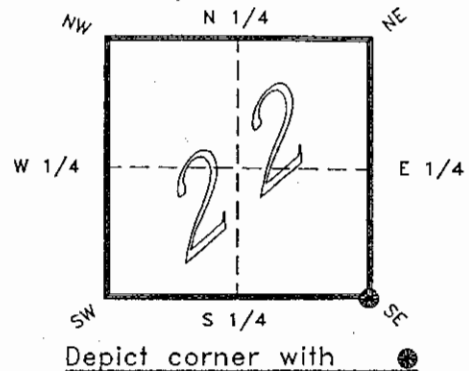
054366

FLORIDA DEPARTMENT OF ENVIRONMENTAL PROTECTION
CERTIFIED CORNER RECORD

R17

CORNER DESCRIPTION:

S.E. corner of Section 22 ,
Twp 42 S. , Rge 23 E. ,
Tallahassee Base Meridian,
CHARLOTTE County(s), Florida.



MONUMENTATION DESCRIPTION:

Describe original monument and accessories, or subsequent restoration. Give sources of information. (If no attempt was made to search for the original monument and accessories, this information is not necessary.)

Description of corner evidence found:

CONCRETE MONUMENT WITH ALUMINUM DISK

State method(s) to determine corner location (lost corners only):

HORIZONTAL POSITION INFORMATION (if determined):

Latitude 26°47'58.18894" N Longitude 81°59'17.57351" W
Y(Northing) 273189.282 m X(Easting) 201171.731 m Zone FLW
Convergence 0°00'19.129" Scale factor 0.99994119

Coordinate determination (circle one): Field traverse GPS
Horizontal datum (circle one): NAD27 NAD83(1986) NAD83(1990) other (explain)

Order of accuracy as defined in "Standards and Specifications for Geodetic Control Networks" published by the Federal Geodetic Control Committee (circle one):
1st, 2nd, 3rd, class 1 ,

or Minimum Technical Standards (Chapter 21HH-6, F.A.C.) ratio of closure for field data (example 1:10,000), _____ . This does not specify an order of accuracy.

Control point(s) used for survey: CHARLOTTE COUNTY HORIZONTAL CONTROL NETWORK INCLUDES HAVOLINE 2, PLACIDA 2, W260, PUNTPORT, & FLGPS 58 AS B ORDER STATIONS.

Comments:

RECEIVED

SEP 14 1995

SURVEY & MAPPING

000000

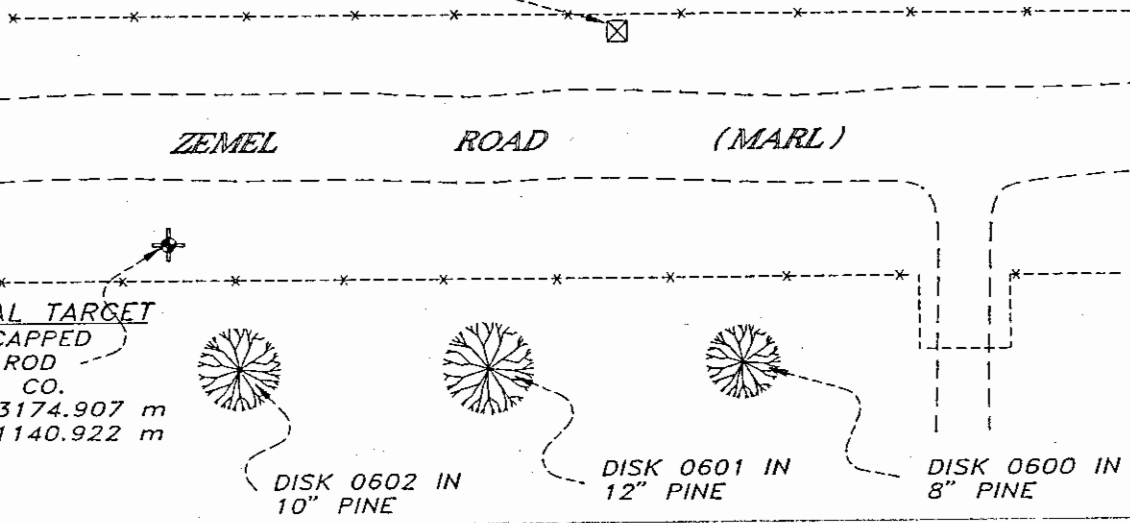
054366

4223R17

DOC. #

SKETCH:

S.E. COR. SEC. 22 42/23
FOUND CONC. MONUMENT



BASIS OF BEARING SOLAR OBSERVATION

REFER: FB 285/32

REFERENCE MEASUREMENTS

| <u>Description</u> | <u>Bearing</u> | <u>Distance</u> |
|-----------------------|----------------|-----------------|
| DISK 0602 IN 10" PINE | S 50°52'34" W | 107.22' |
| DISK 0601 IN 12" PINE | S 19°20'18" W | 83.81' |
| DISK 0600 IN 8" PINE | S 17°25'11" E | 80.17' |
| SET CAPPED IRON ROD | S 64°59'32" W | 111.54' |

SURVEYORS CERTIFICATE: I certify the monument and accessories indicated above were field located on FEBRUARY 14, 19 94.

PLS 4260

UPDATED 2/9/95

REVISED TIES ON 9/12/95

SIGNATURE

9/12/95

DATE

CHARLOTTE COUNTY SURVEY DEPT.

FIRM OR AGENCY

7000 FLORIDA STREET

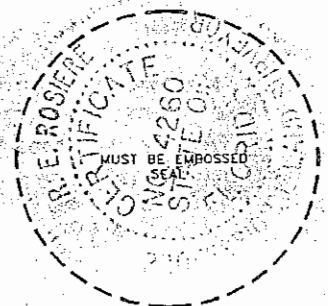
ADDRESS

PUNTA GORDA, FLA. 33950

CITY

STATE

472



Completeness checked by:

Accepted and filed: 10-1-95

B.L.M. - I.D. 27222326

U.N.R. USE ONLY

SEND TO:

Department of Environmental Protection
Bureau of Survey and Mapping
3900 Commonwealth Boulevard
Mail Station 105
Tallahassee, Florida 32399