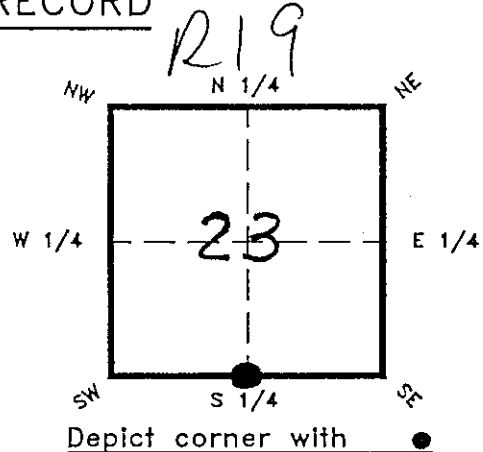


FLORIDA DEPARTMENT OF NATURAL RESOURCES  
CERTIFIED CORNER RECORD

CORNER DESCRIPTION:

S 1/4 corner of Section 23,  
Twp 42 S, Rge 23 E,  
Tallahassee Base Meridian,  
CHARLOTTE County(s), Florida.



MONUMENTATION DESCRIPTION:

Describe original monument and accessories, or subsequent restoration. Give sources of information. (If no attempt was made to search for the original monument and accessories, this information is not necessary.)

Description of corner evidence found:

State method(s) to determine corner location (lost corners only):

SINGLE PROPORTION BETWEEN SW & SE CORNERS OF SECTION

HORIZONTAL POSITION INFORMATION ( if determined ):

Latitude 26°47'58.30642" N Longitude 81°58'49.95612" W  
Y(Northing) 896,300.673 X(Easting) 662,513.324 Zone W  
Convergence 0°00'31.58070" Scale factor 0.99994123

Coordinate determination (circle one): Field traverse GPS

Horizontal datum (circle one): NAD27 NAD83(1986) NAD83(1990) other (explain)

Order of accuracy as defined in "Standards and Specifications for Geodetic Control Networks" published by the Federal Geodetic Control Committee. (circle one):  
1st, 2nd, 3rd, class II,

or Minimum Technical Standards (Chapter 21HH-6, F.A.C.) ratio of closure for field data (example 1:10,000), \_\_\_\_\_. This does not specify an order of accuracy.

Control point(s) used for survey:

Comments:

RECEIVED

APR 6 1995

SURVEY & MAPPING

DNR 53-001(16)  
REV: 7/16/92  
PAGE 1 OF 2

