

4223R25

DOC. #

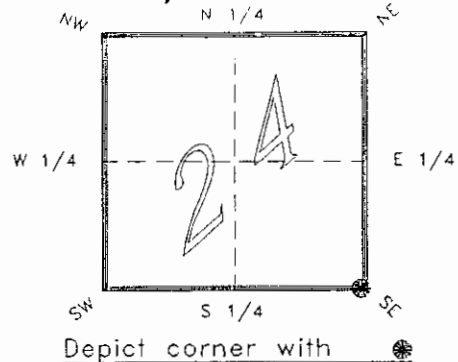
051038

FLORIDA DEPARTMENT OF ENVIRONMENTAL PROTECTION
CERTIFIED CORNER RECORD

R25

CORNER DESCRIPTION:

S.E. corner of Section 24,
Twp 42 S., Rge 23 E.,
Tallahassee Base Meridian,
CHARLOTTE County(s), Florida.



MONUMENTATION DESCRIPTION:

Describe original monument and accessories, or subsequent restoration. Give sources of information. (If no attempt was made to search for the original monument and accessories, this information is not necessary.)

Description of corner evidence found:

CONCRETE MONUMENT

State method(s) to determine corner location (lost corners only):

HORIZONTAL POSITION INFORMATION (if determined):

Latitude 26°47'57.97289" N Longitude 81°57'23.30406" W
Y(Northing) 273183.320 m X(Easting) 204327.617 m Zone FLW
Convergence 0°01'10.649" Scale factor 0.99994141

Coordinate determination (circle one):

Field traverse

GPS

Horizontal datum (circle one): NAD27 NAD83(1986) NAD83(1990) other (explain)

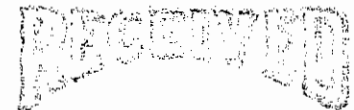
Order of accuracy as defined in "Standards and Specifications for Geodetic Control Networks" published by the Federal Geodetic Control Committee (circle one):

1st, 2nd, 3rd, class 7

or Minimum Technical Standards (Chapter 21HH-6, F.A.C.) ratio of closure for field data (example 1:10,000), . This does not specify an order of accuracy.

Control point(s) used for survey: CHARLOTTE COUNTY HORIZONTAL CONTROL NETWORK INCLUDES HAVOLINE 2, PLACIDA 2, W260, PUNTPORT, & FLGPS 58 AS B ORDER STATIONS.

Comments:



FEB 20 1995

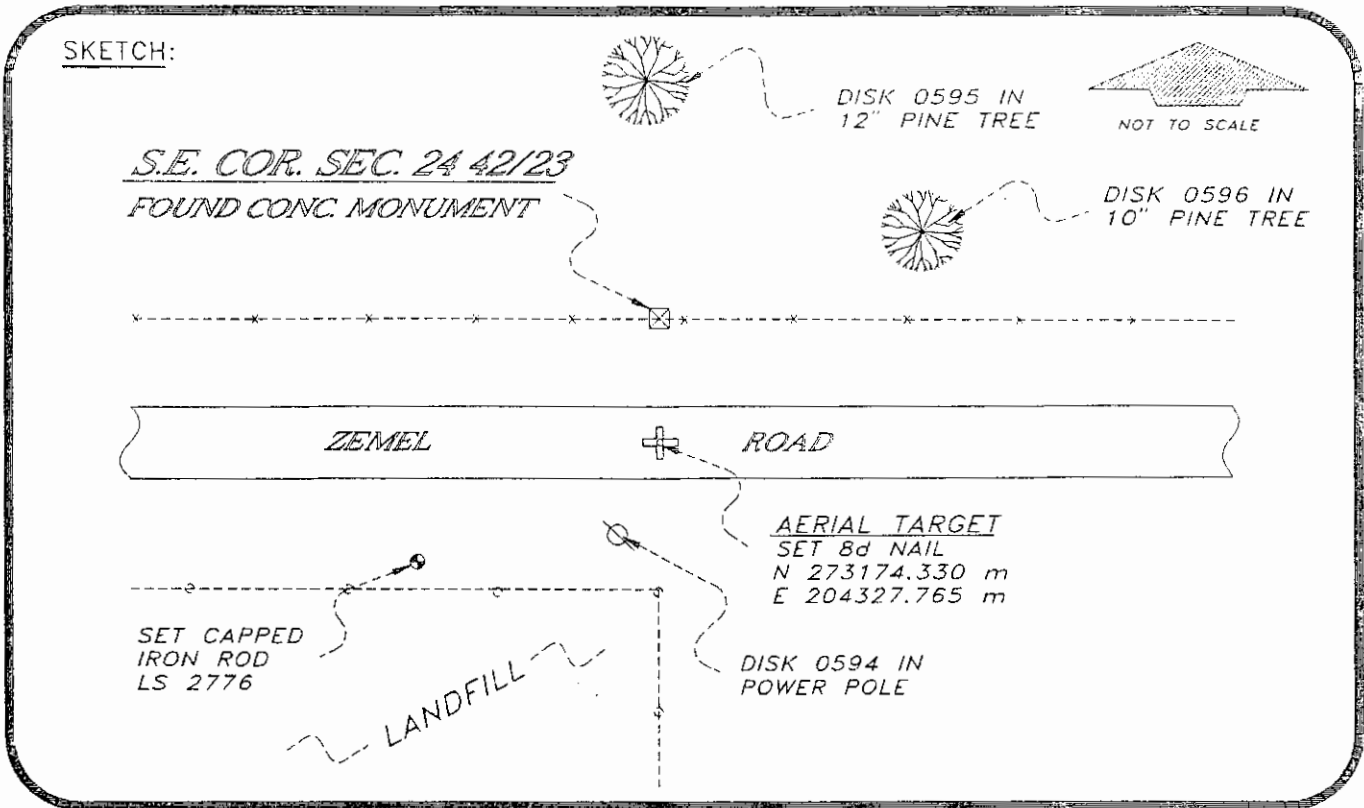
SURVEY & MAPPING

051038

4223R25

DOC. #

SKETCH:



BASIS OF BEARING SOLAR OBSERVATION REFER: FB 285/28

REFERENCE MEASUREMENTS

Description	Bearing	Distance
DISK 0596 IN 12" PINE	N 01°46'18" W	79.52'
DISK 0596 IN 10" PINE	N 73°47'02" E	65.95'
DISK 0594 IN P. POLE	S 07°30'26" W	56.99'
SET CAPPED IRON ROD	S 42°55'07" W	97.26'

SURVEYORS CERTIFICATE: I certify the monument and accessories indicated above were field located on FEBRUARY 11, 19 94

R. Rose
SIGNATURE

PLS 4260

UPDATED 2/8/95

2-15-95
DATE

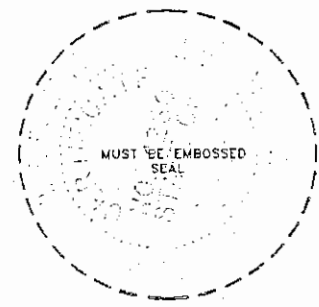
CHARLOTTE COUNTY SURVEY DEPT.

FIRM OR AGENCY

7000 FLORIDA STREET

ADDRESS

PUNTA GORDA, FLA. 33950
CITY STATE



472

Completeness checked by: *B. Smith*
 Accepted and filed: *3-1-95* Date
 B.L.M. - I.D. *25241930* D.N.R. USE ONLY

SEND TO:
 Department of Environmental Protection
 Bureau of Survey and Mapping
 3900 Commonwealth Boulevard
 Mail Station 105
 Tallahassee, Florida 32399