

4223T09

DOC. #

051041

FLORIDA DEPARTMENT OF ENVIRONMENTAL PROTECTION
CERTIFIED CORNER RECORD

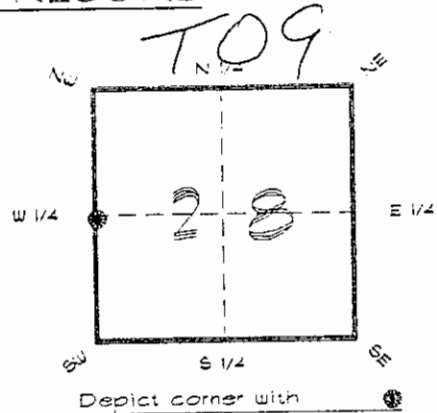
CORNER DESCRIPTION:

W. 1/4 corner of Section 28

Twp 42 S., Rge 23 E.

Tallahassee Base Meridian,

CHARLOTTE County(s), Florida.



MONUMENTATION DESCRIPTION:

Describe original monument and accessories, or subsequent restoration. Give sources of information. (If no attempt was made to search for the original monument and accessories, this information is not necessary.)

Description of corner evidence found:

CONCRETE MONUMENT 2' ABOVE SURFACE AT E' L
DITCH BANK.

RECEIVED

State method(s) to determine corner location (lost corners only):

JAN 31 1995

SURVEY & MAPPING

HORIZONTAL POSITION INFORMATION (if determined):

Latitude 26°47'34.19434" N Longitude 82°01'19.23407" W

Y(Northing) 272450.958 m X(Easting) 197811.593 m Zone FLW

Convergence -0°00'35.716" Scale factor 0.99994124

Coordinate determination (circle one): Field traverse GPS

Horizontal datum (circle one): NAD27 NAD83(1986) NAD83(1990) other (explain)

Order of accuracy as defined in Standards and Specifications for Geodetic Control Networks published by the Federal Geodetic Control Committee (circle one):
1st, 2nd, 3rd class

or Minimum Technical Standards (Chapter 6IG17, F.A.C.) ratio of closure for field data (example 1:10,000), _____ This does not specify an order of accuracy.

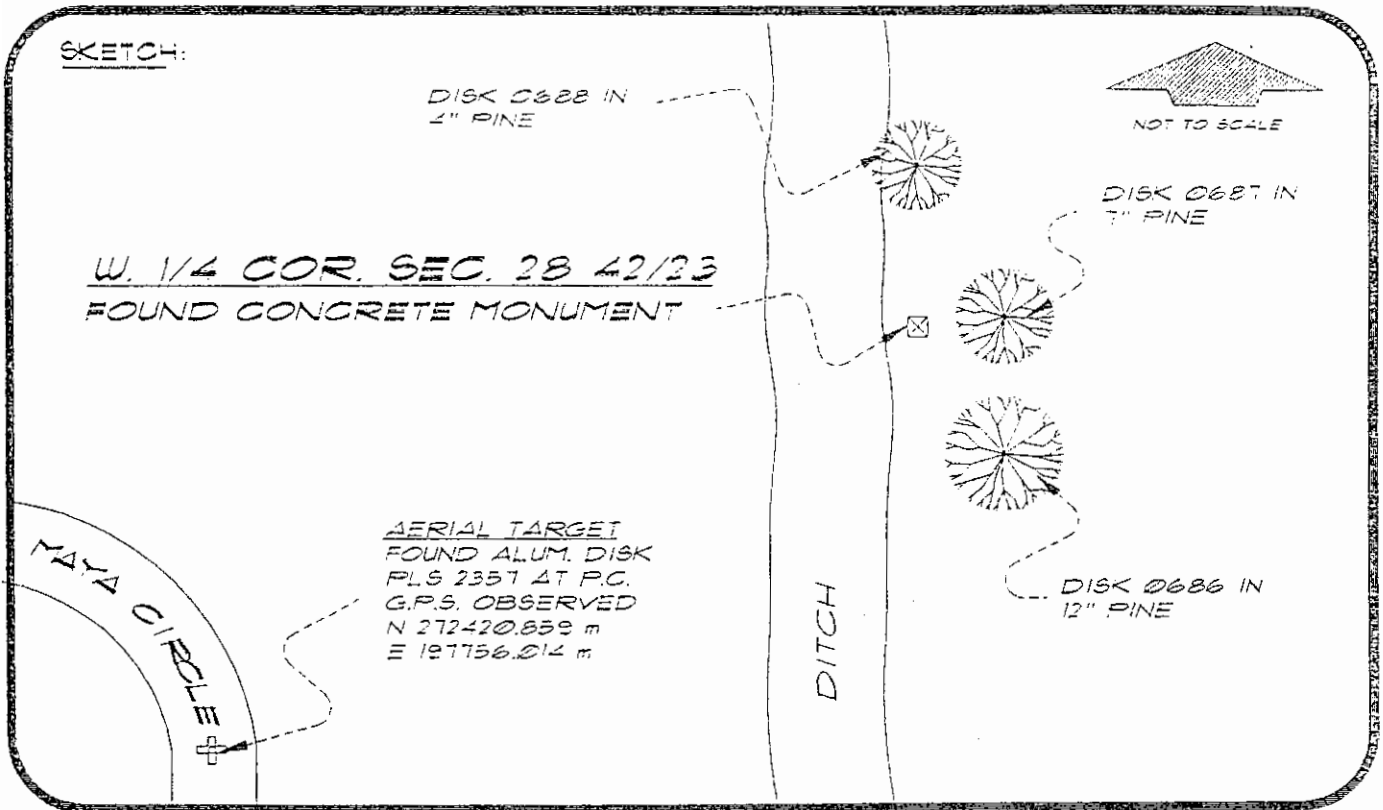
Control point(s) used for survey: CHARLOTTE COUNTY HORIZONTAL CONTROL NETWORK INCLUDES HAYOLINE 2, PLACIDA 2, W260, PUNTPORT, 4 FLGPS 58 45 B ORDER STATIONS.

Comments:

051041

4223T09

DOC. #



BASIS OF BEARING SOLAR OBSERVATION SET SURVEY MARKER POST 3' E'LY

REFER: FB 285/70

REFERENCE MEASUREMENTS

Description	Bearing	Distance
DISK 0688 IN 4" PINE	N 02°12'26" W	31.09'
DISK 0687 IN 7" PINE	N 73°49'56" E	7.74'
DISK 0686 IN 12" PINE	S 26°24'33" E	26.09'
ALUM. DISK AT P.C.	S 61°33'06" W	207.38'

SURVEYORS CERTIFICATE: I certify the monument and accessories indicated above were field located on MAY 16, 1994

RR PLS 4260

UPDATED 1/26/95

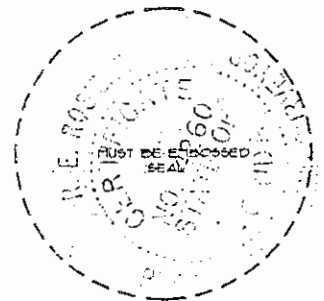
SIGNATURE 1/30/95 DATE

CHARLOTTE COUNTY SURVEY DEPT. FIRM OR AGENCY

7000 FLORIDA STREET ADDRESS

PUNTA GORDA, FLORIDA 33950 CITY STATE

473



Completeness checked by: [Signature]

Accepted and filed: 3-1-95 Date

BLM - ID. 2900CL28 D.E.P. USE ONLY

SEND TO:

Department of Environmental Protection
Bureau of Survey and Mapping
3900 Commonwealth Boulevard
Mail Station 105
Tallahassee, Florida 32399