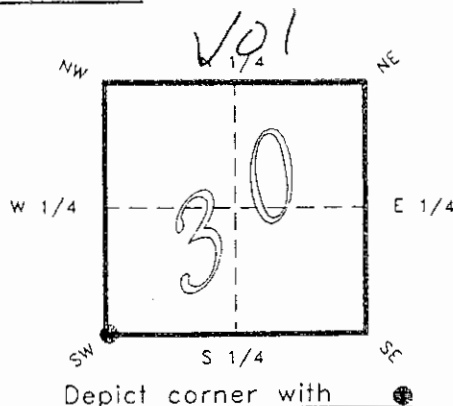


4223V01

FLORIDA DEPARTMENT OF ENVIRONMENTAL PROTECTION  
CERTIFIED CORNER RECORD

CORNER DESCRIPTION:

S.W. corner of Section 30,  
Twp 42 S., Rge 23 E.,  
Tallahassee Base Meridian,  
CHARLOTTE County(s), Florida.



MONUMENTATION DESCRIPTION:

Describe original monument and accessories, or subsequent restoration. Give sources of information. (If no attempt was made to search for the original monument and accessories, this information is not necessary.)

Description of corner evidence found:

CONCRETE MONUMENT 3"x3" TAPERED BROKEN REPLACED WITH CONCRETE MONUMENT

State method(s) to determine corner location (lost corners only):

RECEIVED  
JAN 31 1995  
SURVEY & MAPPING

HORIZONTAL POSITION INFORMATION ( if determined ):

Latitude 26°47'06.40006" N Longitude 82°03'15.85698" W

Y(Northing) 271596.529 m X(Easting) 194590.157 m Zone FLW.

Convergence -0°01'28.262" Scale factor 0.99994154

Coordinate determination (circle one): Field traverse  GPS

Horizontal datum (circle one): NAD27  NAD83(1986)  NAD83(1990)  other (explain)

Order of accuracy as defined in "Standards and Specifications for Geodetic Control Networks" published by the Federal Geodetic Control Committee (circle one):  
1st,  2nd,  3rd, class 1

or Minimum Technical Standards (Chapter 21HH-6, F.A.C.) ratio of closure for field data (example 1:10,000), \_\_\_\_\_ . This does not specify an order of accuracy.

Control point(s) used for survey: CHARLOTTE COUNTY HORIZONTAL CONTROL NETWORK INCLUDES HAVOLINE 2, PLACIDA 2, W260, PUNTPORT, & FLGPS 58 AS B ORDER STATIONS.

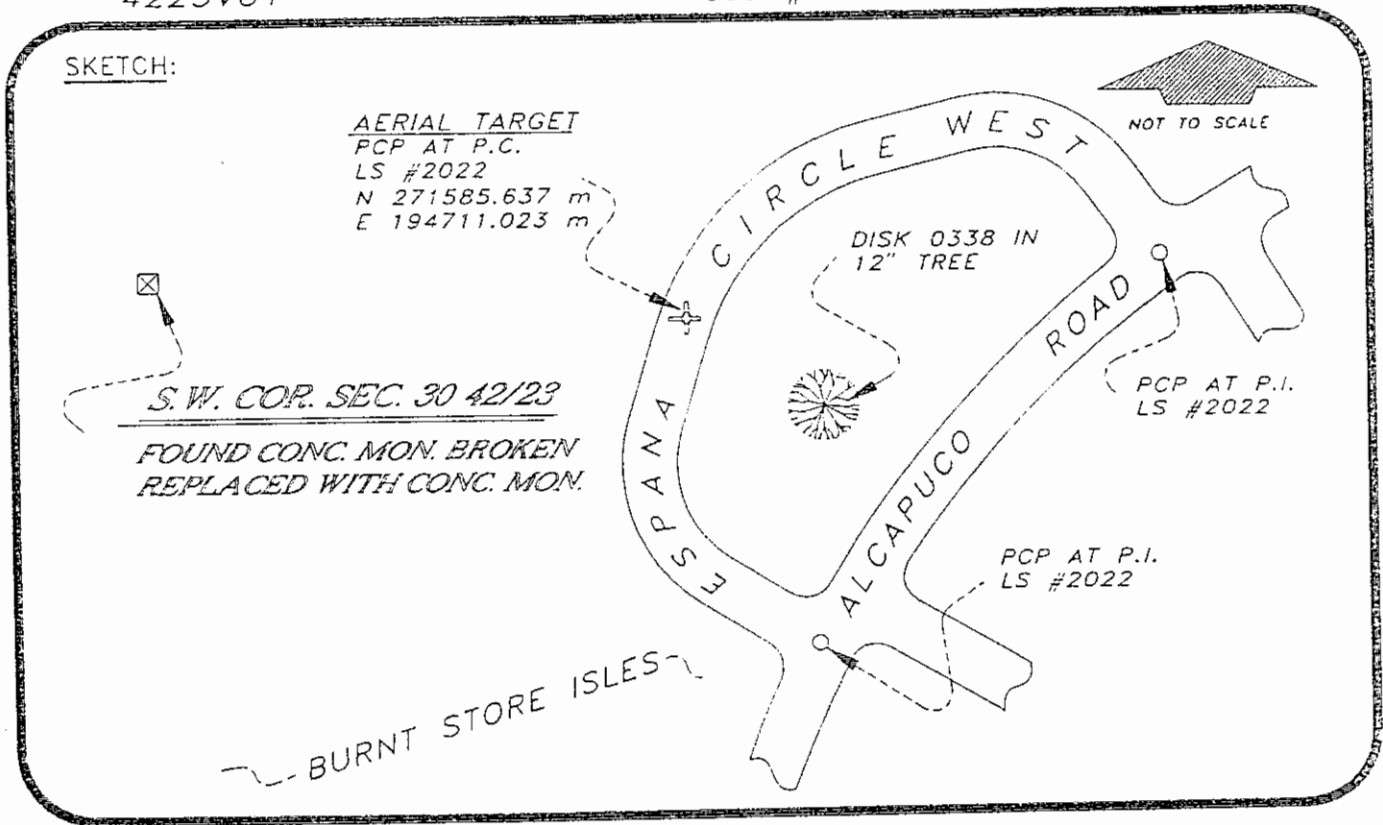
Comments:

4223V01

DOC. #

051045

SKETCH:



BASIS OF BEARING SOLAR OBSERVATION  
 SET SURVEY MARKER POST 3.0' W'LY  
 REFERENCE MEASUREMENTS

REFER: FB 285/10

Description	Bearing	Distance
PCP AT P.I. LS #2022	S 66°59'16" E	489.85'
PCP AT P.I. LS #2022	N 88°22'01" E	676.60'
PCP AT P.C. LS #2022	S 84°52'30" E	398.17'
DISK 0338 IN 12" TREE	S 76°54'05" E	455.02"

SURVEYORS CERTIFICATE: I certify the monument and accessories indicated above were field located on DECEMBER 1, 1993.

*R. Rose*  
 SIGNATURE

PLS 4260

UPDATED 1/24/95

1/30/95  
DATE

CHARLOTTE COUNTY SURVEY DEPT.

7000 FLORIDA STREET  
FIRM OR AGENCY

PUNTA GORDA, FLA. 33950  
CITY STATE



473

Completeness checked by: B. L. Lento  
 Accepted and filed: 3-1-95 Date  
 B.L.M. - I.D. 36253031 D.N.R. USE ONLY

SEND TO:

Department of Environmental Protection  
 Bureau of Survey and Mapping  
 3900 Commonwealth Boulevard  
 Mail Station 105  
 Tallahassee, Florida 32399