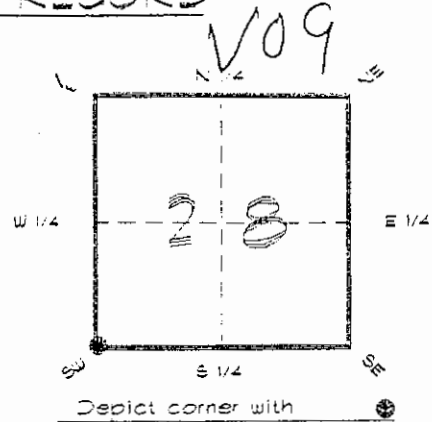


FLORIDA DEPARTMENT OF ENVIRONMENTAL PROTECTION
CERTIFIED CORNER RECORD

CORNER DESCRIPTION:

S. W. corner of Section 28
Twp 42 S. , Rge 23 E.
Tallahassee Base Meridian,
CHARLOTTE County(s), Florida.



MONUMENTATION DESCRIPTION:

Describe original monument and accessories, or subsequent restoration. Give sources of information. (If no attempt was made to search for the original monument and accessories, this information is not necessary.)

Description of corner evidence found:

CONCRETE MONUMENT

State method(s) to determine corner location (lost corners only):

HORIZONTAL POSITION INFORMATION (if determined):

Latitude 26°47'05.95754" N Longitude 82°01'19.44643" W

Y(Northing) 271581.943 m X(Easting) 197805.577 m Zone FLW

Convergence -0°00'35.802" scale factor 0.99994124"

Coordinate determination (circle one): Field traverse GPS

Horizontal datum (circle one): NAD27 NAD83(1986) NAD83(1990) other (explain)

Order of accuracy as defined in Standards and Specifications for Geodetic Control Networks published by the Federal Geodetic Control Committee (circle one):
1st, 2nd, 3rd, class _____

or Minimum Technical Standards (Chapter 61G17, F.A.C.) ratio of closure for field data (example 1:10,000), _____ . This does not specify an order of accuracy.

Control point(s) used for survey: CHARLOTTE COUNTY HORIZONTAL CONTROL NETWORK INCLUDES HAVOLINE 2, PLACIDA 2, W260, PUNTPORT, & FLGPS 58 AS B ORDER STATIONS.

Comments:



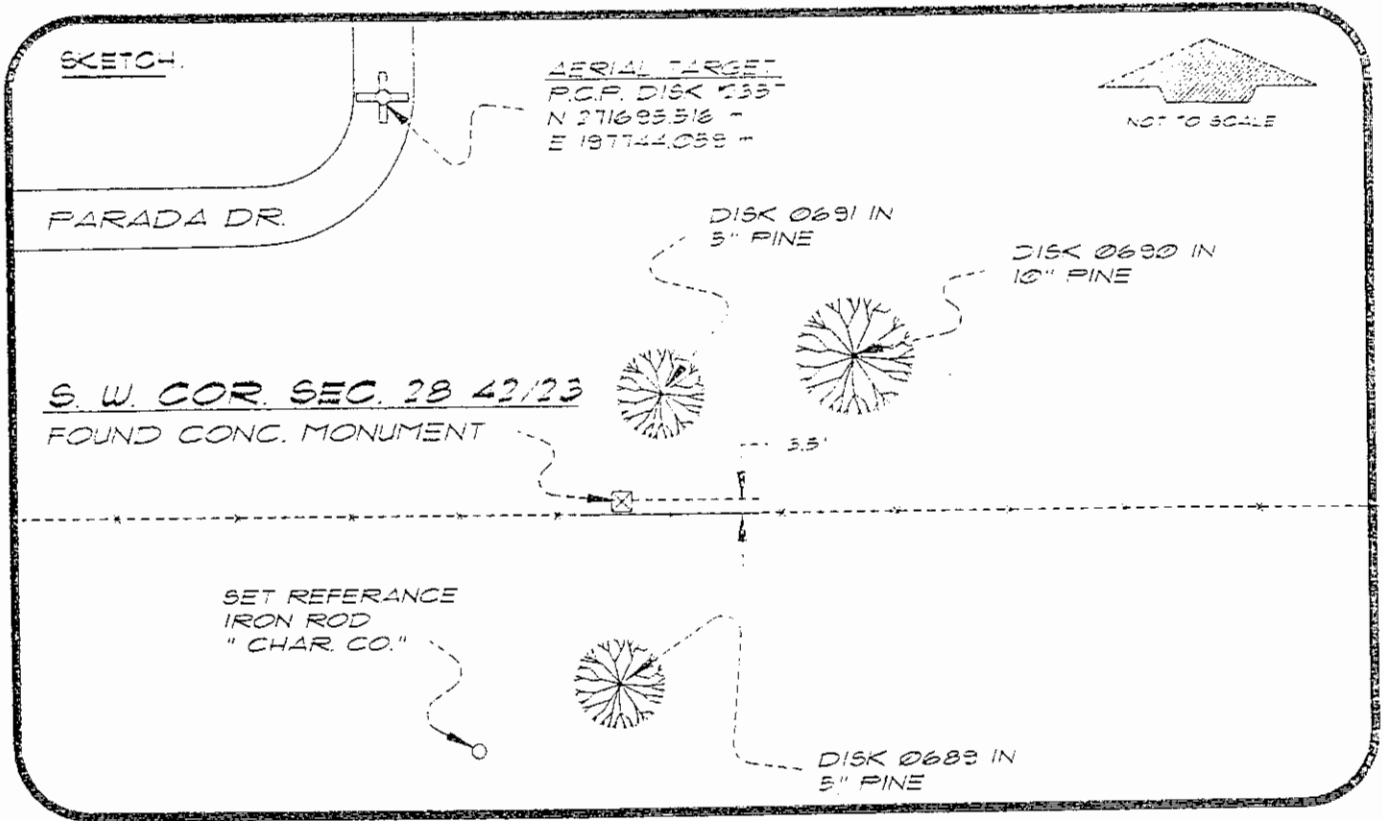
FEB 20 1995

SURVEY & MAPPING

051042

4223V09

DOC. #



BASIS OF BEARING SOLAR OBSERVATION REFER: FB 285/72
 SET SURVEY MARKER POST 3' N'LY
REFERENCE MEASUREMENTS

Description	Bearing	Distance
SET REF. IRON ROD	S 27°32'03" W	106.19'
DISK 0691 IN 5" PINE	N 14°45'55" E	16.85'
DISK 0690 IN 10" PINE	N 73°56'11" E	48.58'
DISK 0689 IN 5" PINE	S 01°47'17" W	67.13
AERIAL TARGET	N 28°27'10" W	423.79'

SURVEYORS CERTIFICATE: I certify the monument and accessories indicated above were field located on MAY 16, 1994

R. Rose
 SIGNATURE

PLS 4260

UPDATED 2/15/95

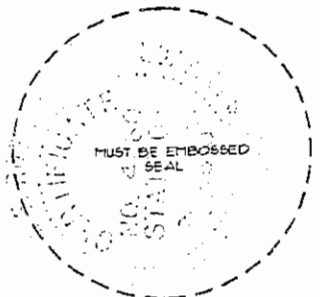
2-15-95
 DATE

CHARLOTTE COUNTY SURVEY DEPT.
 FIRM OR AGENCY

7000 FLORIDA STREET
 ADDRESS

PUNTA GORDA, FLORIDA 33950
 CITY STATE

473



Completeness checked by: *B. Smith*
 Accepted and filed: 3-1-95 Date
 BLM - ID: 32292833 DEP. USE ONLY

SEND TO:
 Department of Environmental Protection
 Bureau of Survey and Mapping
 3500 Commonwealth Boulevard
 Mail Station 103
 Tallahassee Florida 32399