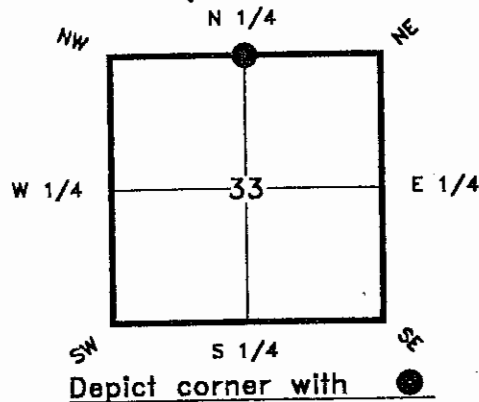


# FLORIDA DEPARTMENT OF ENVIRONMENTAL PROTECTION CERTIFIED CORNER RECORD

VII

CORNER DESCRIPTION:

North 1/4 corner of Section 33,  
Twp 42 S, Rge 23 E,  
Tallahassee Base Meridian,  
Charlotte County, Florida



MONUMENTATION DESCRIPTION:

Describe original monument and accessories, or subsequent restoration. Give sources of information. (If no attempt was made to search for the original monument and accessories, this information is not necessary.)

Description of corner evidence found:  
FOUND A 4" X 4" CONCRETE MONUMENT.

State method(s) to determine corner location (lost corners only):

DEC 22 1993

HORIZONTAL POSITION INFORMATION ( if determined ):

Latitude	N 26°47'06"	Longitude	W 82°00'50"	
	271507459		198627.135	
Y(NORTHING-Ft.)	891033.190	X(EASTING-Ft.)	651662.524	Zone FL-W
Convergence	-0°00'22"	Scale factor	0.9999412	

Coordinate determination (circle one): Field traverse GPS

Horizontal datum (circle one): NAD27 NAD83(1986) NAD83(1990) other (explain)

Order of accuracy as defined in "Standards and Specifications for Geodetic Control Networks" published by the Federal Geodetic Control Committee (circle one):  
1st, 2nd, 3rd, class 1.

or Minimum Technical Standards (Chapter 21HH-6, F.A.C.) ratio of closure for field data (example 1:10,000). This does not specify an order of accuracy.

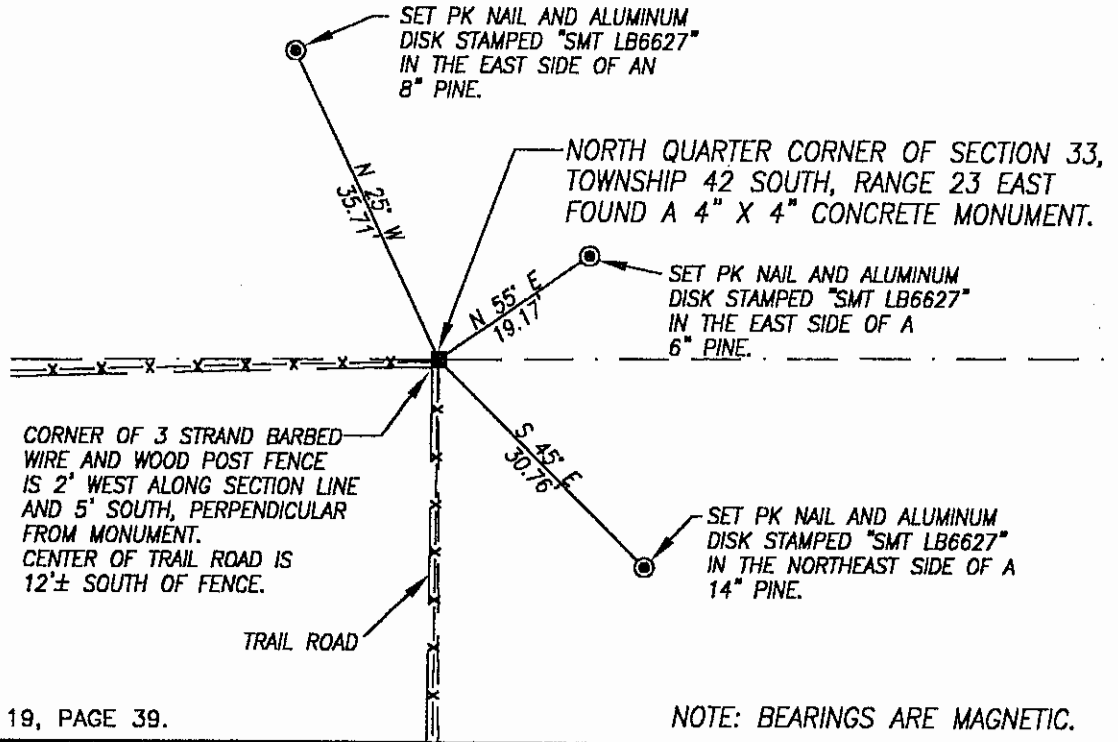
Control point(s) used for survey:  
TIE TO THE NORTH LINE OF THE NORTHWEST QUARTER OF SECTION 3, TOWNSHIP 43 SOUTH, RANGE 23 EAST, BUREAU OF SURVEY AND MAPPING MISCELLANEOUS NUMBER 2331 & 2332.

Comments:  
SMT FILE #98060

SKETCH:



SCALE  
1" = 20'



FIELD BOOK 19, PAGE 39.

All bearings and distances must be from the corner to the witness. Indicate whether corner was found, set, or replaced and show north arrow.

REFERENCE MEASUREMENTS ( at least three vicinity references must be given below even if they appear on the above sketch ):

Description	Bearing	Distance
SET NAIL AND DISK STAMPED "SMT LB 6627" IN THE EAST SIDE OF AN 8" PINE.	N25°W	35.71'
SET NAIL AND DISK STAMPED "SMT LB 6627" IN THE EAST SIDE OF A 6" PINE.	N55°E	19.17'
SET NAIL AND DISK STAMPED "SMT LB 6627" IN THE NORTHEAST SIDE OF A 14" PINE.	S45°E	30.76'

SURVEYORS CERTIFICATE: I certify the monument and accessories indicated above were field located on December 7, 1998.

*James S. Richmond* 4118  
SIGNATURE LS NO.

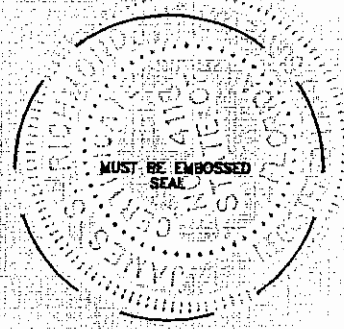
12-18-98  
DATE

Southern Mapping Technology, Inc. 6627  
FIRM OR AGENCY LB NO.

4376 Corporate Square, Suite #1  
ADDRESS  
Naples, Florida 34104  
CITY STATE

Completeness checked by: *PL*  
Accepted and filed: *1-1-99* Date  
B.L.M. - I.D. *33C0028* D.E.P. USE ONLY

473  
PUNTA  
CORDA



SEND TO: *SE*

Department of Environmental Protection  
Bureau of Survey and Mapping  
3900 Commonwealth Boulevard  
Mail Station 105  
Tallahassee, Florida 32399