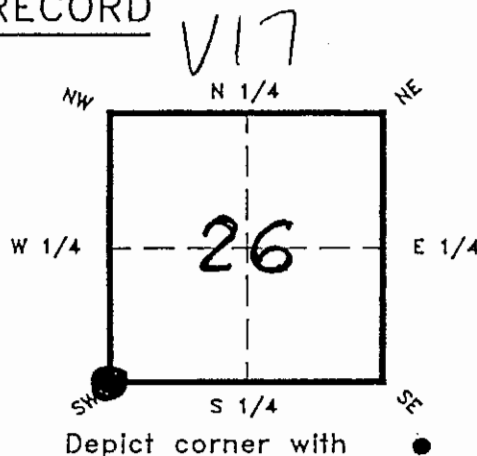


FLORIDA DEPARTMENT OF NATURAL RESOURCES
CERTIFIED CORNER RECORD

CORNER DESCRIPTION:

SW corner of Section 26 ,
Twp 42S , Rge 23E ,
Tallahassee Base Meridian,
CHARLOTTE County(s), Florida.



MONUMENTATION DESCRIPTION:

Describe original monument and accessories, or subsequent restoration. Give sources of information. (If no attempt was made to search for the original monument and accessories, this information is not necessary.)

Description of corner evidence found:

State method(s) to determine corner location (lost corners only):

DOUBLE PROPORTION BETWEEN SOUTHEAST CORNERS OF SECTIONS 22, 26, 28 & 30
T42S, R23E

HORIZONTAL POSITION INFORMATION (if determined):

Latitude 26°47'05.42639" N Longitude 81°59'21.14915" W
Y(Northing) 890,960.9843 X(Easting) 659,687.3845 Zone W
Convergence 0°00'17.508" Scale factor 0.99994119

Coordinate determination (circle one): Field traverse GPS

Horizontal datum (circle one): NAD27 NAD83(1986) NAD83(1990) other (explain)

Order of accuracy as defined in "Standards and Specifications for Geodetic Control Networks" published by the Federal Geodetic Control Committee (circle one):
1st, 2nd, 3rd, class II ,

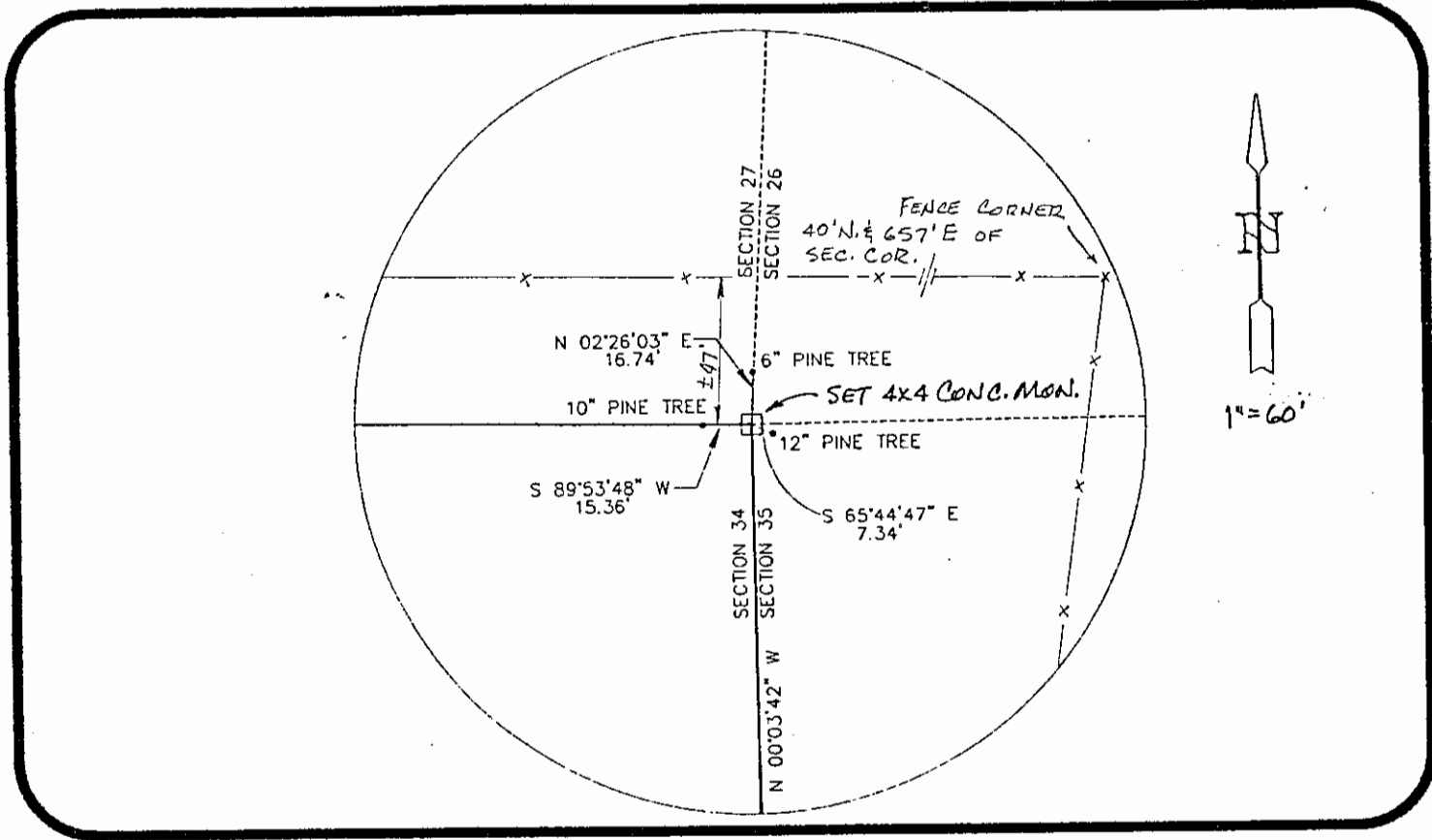
or Minimum Technical Standards (Chapter 21HH-6, F.A.C.) ratio of closure for field data (example 1:10,000), _____ . This does not specify an order of accuracy.

Control point(s) used for survey:

Comments:

RECEIVED
APR 6 1995

SURVEY & MAPPING
DNR 53-001(16)
REV: 7/16/92
PAGE 1 OF 2



All bearings and distances must be from the corner to the witness. Indicate whether corner was found, set, or replaced and show north arrow.

REFERENCE MEASUREMENTS (at least three vicinity references must be given below even if they appear on the above sketch):

Description	Bearing	Distance
SET PK & DISC IN 6" PINE TREE	N 02°26'03"E	16.74'
SET PK & DISC IN 12" PINE TREE	S 65°44'47"E	7.34'
SET PK & DISC IN 10" PINE TREE	S 89°53'48"W	15.36'

SURVEYORS CERTIFICATE: I certify the monument and accessories indicated above were field located on FEBRUARY 1, 1995.

Michael L. Starn 2904
SIGNATURE PLS NO.

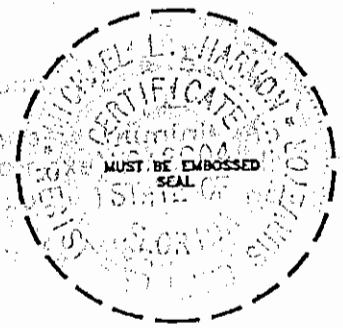
2-15-95
DATE

JOHNSON ENGINEERING, Inc 642
FIRM OR AGENCY LB. NO.

PO Box 1550
ADDRESS

FT. MYERS FL 33902
CITY STATE

472
Contract



Completeness checked by: B. Smith
Accepted and filed: 3-15-95
B.L.M. - I.D. 34272635 Date
D.N.R. USE ONLY

SEND TO:

Department of Natural Resources
Bureau of Survey and Mapping
3900 Commonwealth Boulevard
Mall Station 105
Tallahassee, Florida 32399

DNR 53-001(16)
REV. 7/16/92
PAGE 2 OF 2