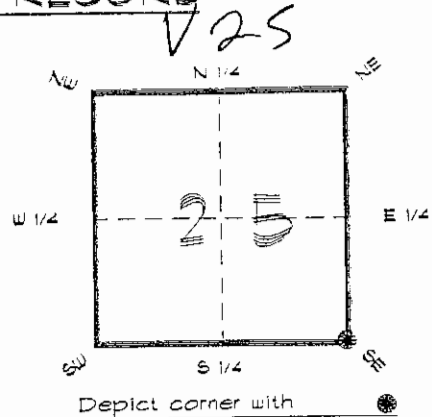


4223V25

FLORIDA DEPARTMENT OF ENVIRONMENTAL PROTECTION
CERTIFIED CORNER RECORD

CORNER DESCRIPTION:

S. E. corner of Section 25,
Twp 42 S., Rge 23 E.,
Tallahassee Base Meridian,
CHARLOTTE County(s), Florida.



MONUMENTATION DESCRIPTION:

Describe original monument and accessories, or subsequent restoration. Give sources of information. (If no attempt was made to search for the original monument and accessories, this information is not necessary.)

Description of corner evidence found:

L. WOOD POST, REPLACED WITH CONCRETE MONUMENT.

State method(s) to determine corner location (lost corners only):

HORIZONTAL POSITION INFORMATION (if determined):

Latitude 26°47'05.17697" N Longitude 81°57'23.42413" W

Y(Northing) 271558.464 m X(Easting) 204324.856 m Zone FLW

Convergence 0°01'10.559" Scale factor 0.99994141

Coordinate determination (circle one): Field traverse GPS

Horizontal datum (circle one): NAD27 NAD83(1986) NAD83(1990) other (explain)

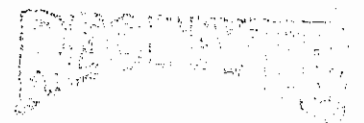
Order of accuracy as defined in Standards and Specifications for Geodetic Control Networks published by the Federal Geodetic Control Committee (circle one):

1st, 2nd, 3rd class

or Minimum Technical Standards (Chapter 6IG17, F.A.C.) ratio of closure for field data (example 1:10,000), _____ . This does not specify an order of accuracy.

Control point(s) used for survey: *CHARLOTTE COUNTY HORIZONTAL CONTROL NETWORK INCLUDES HAVOLINE 2, PLACIDA 2, W260, FUNTPORT, & FLGPS 58 AS B ORDER STATIONS.*

Comments:



FEB 20 1995

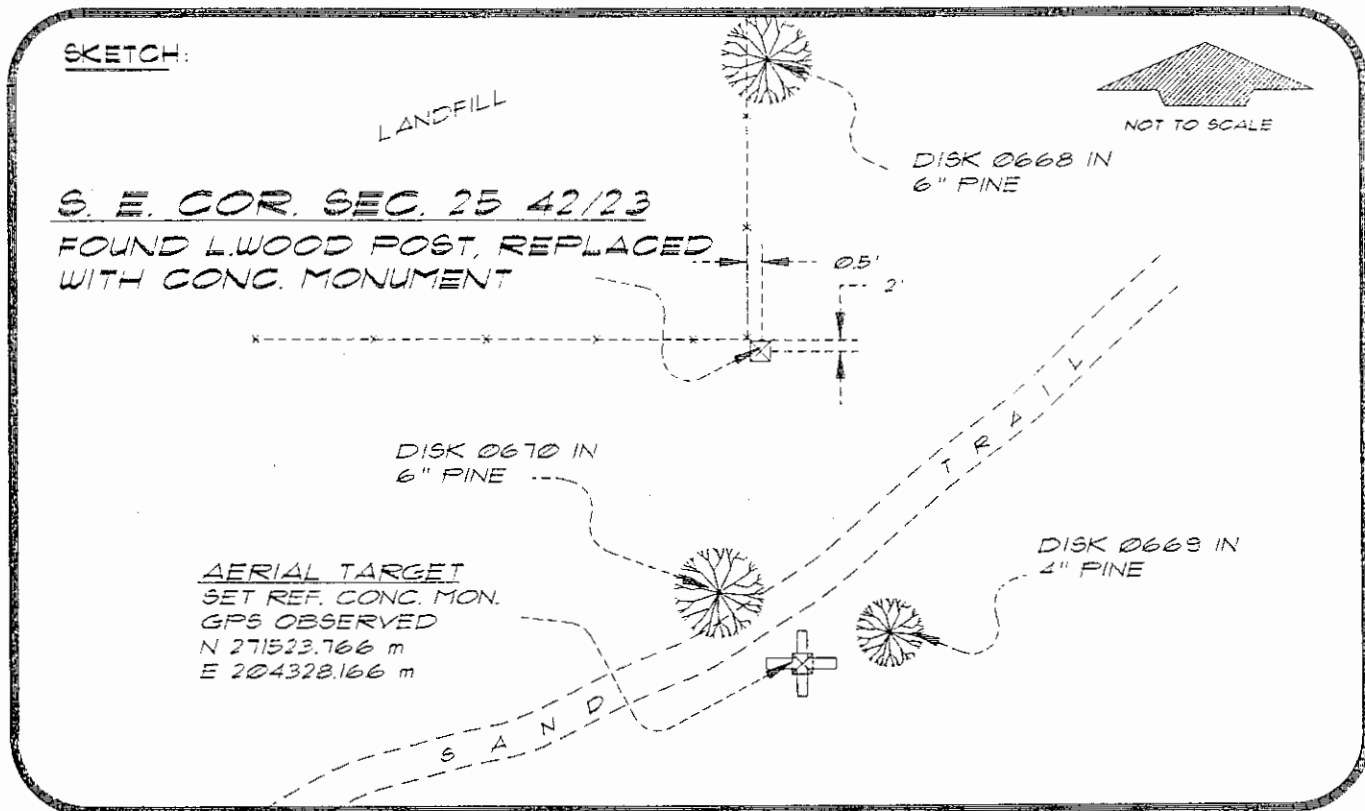
SURVEY & MAPPING

051039

4223V25

DOC #

SKETCH:



S. E. COR. SEC. 25 42/23
 FOUND L.WOOD POST, REPLACED
 WITH CONC. MONUMENT

AERIAL TARGET
 SET REF. CONC. MON.
 GPS OBSERVED
 N 271523.766 m
 E 204328.166 m

BASIS OF BEARING SOLAR OBSERVATION
 SET SURVEY MARKER POST 3' S'LY

REFER: FB 285/57

REFERENCE MEASUREMENTS

Description	Bearing	Distance
DISK 0668 IN 6" PINE	N 00°00'29" W	141.18'
DISK 0669 IN 4" PINE	S 17°32'48" E	108.61'
DISK 0670 IN 6" PINE	S 14°09'17" W	93.77'
SET REF. CONC. MON.	S 05°25'44" E	114.36'
	(S 05°26'55" E GRID)	

SURVEYORS CERTIFICATE: I certify the monument and accessories indicated above were field located on MARCH 31, 1994

R. P. [Signature]
 SIGNATURE

PLS 4260

UPDATED 2/8/95

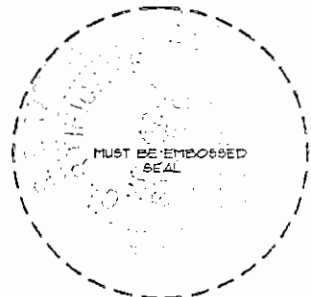
2-15-95
 DATE

CHARLOTTE COUNTY SURVEY DEPT.
 FIRM OR AGENCY

1000 FLORIDA STREET
 ADDRESS

PUNTA GORDA, FLORIDA 33950
 CITY STATE

472



Completeness checked by: *B. J. [Signature]*
 Accepted and filed: 3-1-95 Date
 B.L.M. - ID. 36253031 D.E.P. USE ONLY

SEND TO:

Department of Environmental Protection
 Bureau of Survey and Mapping
 3900 Commonwealth Boulevard
 Mail Station 105
 Tallahassee, Florida 32399