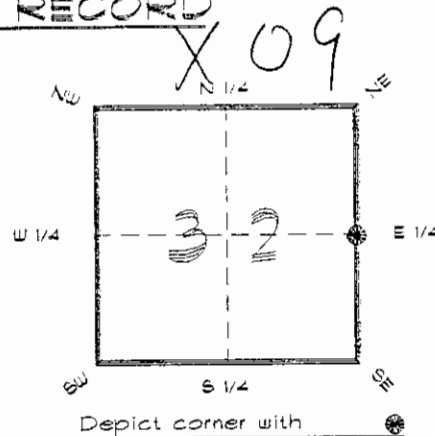


4223X09

FLORIDA DEPARTMENT OF ENVIRONMENTAL PROTECTION
CERTIFIED CORNER RECORD

CORNER DESCRIPTION:

E. 1/4 corner of Section 32
Twp 42 S., Rge 23 E.,
Tallahassee Base Meridian,
CHARLOTTE County(s), Florida.



MONUMENTATION DESCRIPTION:

Describe original monument and accessories, or subsequent restoration. Give sources of information. (If no attempt was made to search for the original monument and accessories, this information is not necessary.)

Description of corner evidence found:

CONCRETE MONUMENT BROKEN, REPLACED WITH
CONCRETE MONUMENT.

State method(s) to determine corner location (lost corners only):

HORIZONTAL POSITION INFORMATION (if determined):

Latitude 26°46'39.53083" N Longitude 82°01'19.05321" W
Y(Northing) 270768.633 m X(Easting) 197816.298 m Zone FLW
Convergence -0°00'35.616" Scale factor 0.99994124

Coordinate determination (circle one): Field traverse GPS

Horizontal datum (circle one): NAD27 NAD83(1986) NAD83(1990) other (explain)

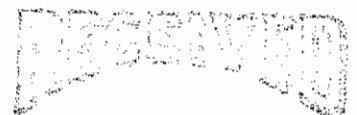
Order of accuracy as defined in Standards and Specifications for Geodetic Control Networks published by the Federal Geodetic Control Committee (circle one):

1st, 2nd, 3rd, class _____

or Minimum Technical Standards (Chapter 6IG17, F.A.C.) ratio of closure for field data (example 1:10,000), _____. This does not specify an order of accuracy.

Control point(s) used for survey: CHARLOTTE COUNTY HORIZONTAL CONTROL NETWORK INCLUDES HAYOLINE 2, FLACIDA 2, W260, FUNTPORT, & FLGPS 58 AS B ORDER STATIONS.

Comments:



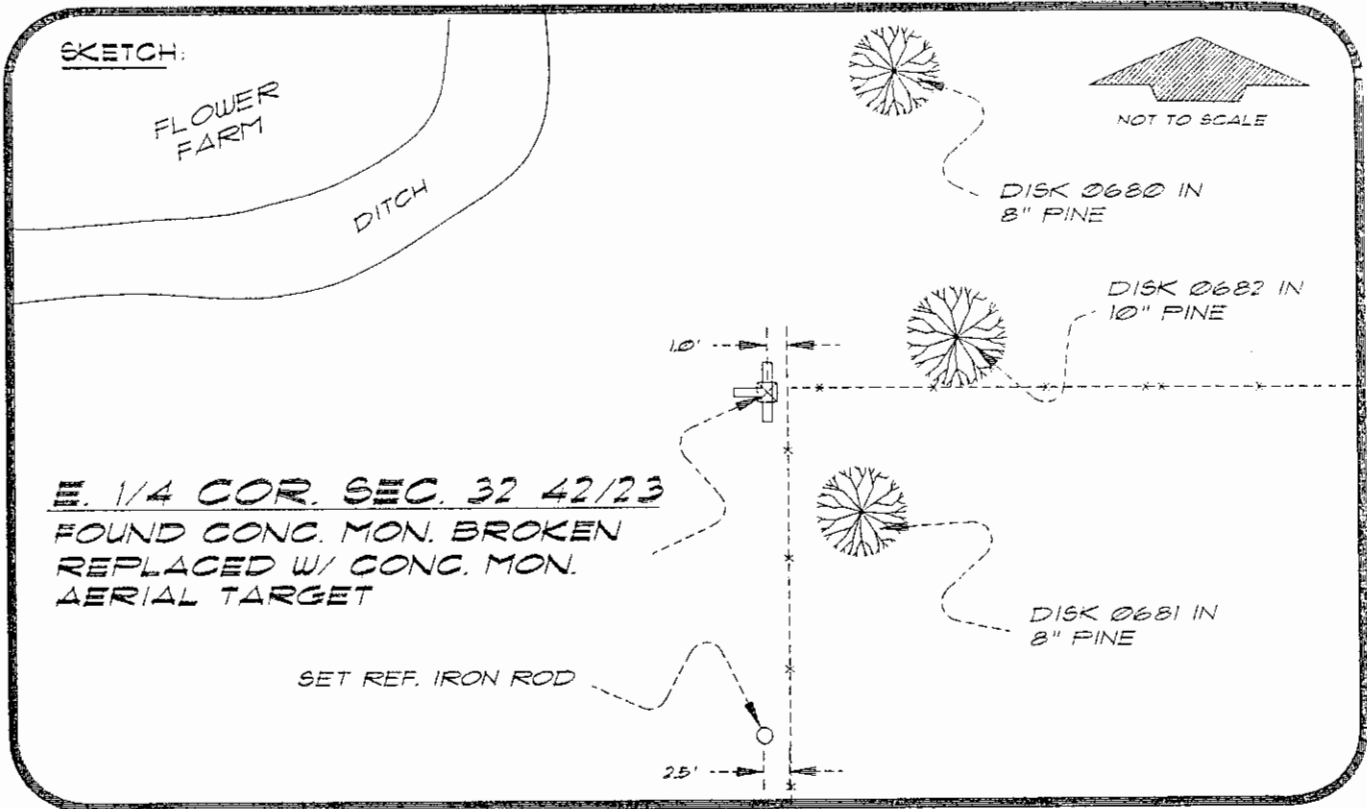
FEB 20 1995

SURVEY & MAPPING

4223X09

DOC. #

051049



BASIS OF BEARING SOLAR OBSERVATION REFER: FB 285/68
SET SURVEY MARKER POST 3' W'LY
REFERENCE MEASUREMENTS

Description	Bearing	Distance
DISK 0681 IN 8" PINE	S 31°41'00" E	20.45'
DISK 0682 IN 10" PINE	N 70°28'47" E	34.81'
DISK 0680 IN 8" PINE	N 22°26'25" E	100.03'
SET REF. IRON ROD	S 00°22'23" W	77.89'

SURVEYORS CERTIFICATE: I certify the monument and accessories indicated above were field located on MAY 11, 1994

R. Ross
SIGNATURE

PLS 4260

UPDATED 2/8/95

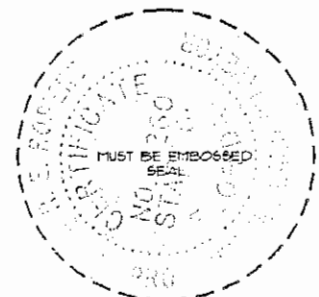
2-15-95
DATE

CHARLOTTE COUNTY SURVEY DEPT.
FIRM OR AGENCY

7000 FLORIDA STREET
ADDRESS

PUNTA GORDA, FLORIDA 33950
CITY STATE

473



Completeness checked by: *[Signature]*
Accepted and filed: 3-1-95 Date
BLM - I.D. 3200CL33 DEP. USE ONLY

SEND TO:

Department of Environmental Protection
Bureau of Survey and Mapping
3500 Commonwealth Boulevard
Mail Station 105
Tallahassee, Florida 32309