

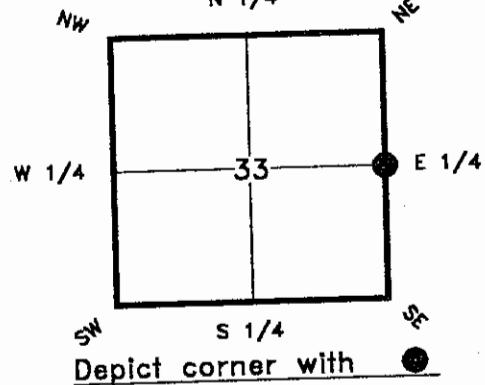
FLORIDA DEPARTMENT OF ENVIRONMENTAL PROTECTION
CERTIFIED CORNER RECORD

011

X13
N 1/4

CORNER DESCRIPTION:

East 1/4 corner of Section 33,
Twp 42 S, Rge 23 E,
Tallahassee Base Meridian,
Charlotte County, Florida



MONUMENTATION DESCRIPTION:

Describe original monument and accessories, or subsequent restoration. Give sources of information. (If no attempt was made to search for the original monument and accessories, this information is not necessary.)

Description of corner evidence found:

FOUND 3" X 3" TAPERED CONCRETE MONUMENT WITH AN "X" FORMED IN THE TOP.

State method(s) to determine corner location (lost corners only):

DEC 22 1993

HORIZONTAL POSITION INFORMATION (if determined):

Latitude N 26°46'40" Longitude W 82°00'20"
270769.592 199450.603
Y(NORTHING-Ft.) 888349.902 X(EASTING-Ft.) 654364.187 Zone FL-W

Convergence -0°00'09" Scale factor 0.9999412

Coordinate determination (circle one): Field traverse GPS

Horizontal datum (circle one): NAD27 NAD83(1986) NAD83(1990) other (explain)

Order of accuracy as defined in "Standards and Specifications for Geodetic Control Networks" published by the Federal Geodetic Control Committee (circle one):
1st, 2nd, 3rd, class 1.

or Minimum Technical Standards (Chapter 21HH-6, F.A.C.) ratio of closure for field data (example 1:10,000). This does not specify an order of accuracy.

Control point(s) used for survey:

ITIE TO THE NORTH LINE OF THE NORTHWEST QUARTER OF SECTION 3, TOWNSHIP 43 SOUTH, RANGE 23 EAST, BUREAU OF SURVEY AND MAPPING MISCELLANEOUS FILE NUMBER 2331 & 2332.

Comments:

SMT FILE #98060

****PLEASE SEND ORIGINAL ONLY****
****PLEASE COMPLETE IN BLACK INK OR TYPE****

SKETCH:



SCALE
1" = 20'

FIELD BOOK 19, PAGE 35.

EAST QUARTER CORNER OF SECTION 33, TOWNSHIP 42 SOUTH, RANGE 23 EAST FOUND A 3" X 3" TAPERED CONCRETE MONUMENT WITH AN "X" FORMED IN THE TOP.

SECTION 33

SECTION 34

SET PK NAIL AND ALUMINUM DISK STAMPED "SMT LB 6627" IN THE NORTH SIDE OF A 12" PINE.

N 75° W
24.09'

N 50° E
22.92'

SET PK NAIL AND ALUMINUM DISK STAMPED "SMT LB 6627" IN THE SOUTHEAST SIDE OF A 6" PINE.

S 20° E
38.94'

SET PK NAIL AND ALUMINUM DISK STAMPED "SMT LB 6627" IN THE SOUTHWEST SIDE OF A 7" PINE.

NOTE: BEARINGS ARE MAGNETIC.

All bearings and distances must be from the corner to the witness. Indicate whether corner was found, set, or replaced and show north arrow.

REFERENCE MEASUREMENTS (at least three vicinity references must be given below even if they appear on the above sketch):

Description	Bearing	Distance
SET PK NAIL AND DISK STAMPED "SMT LB 6627" IN THE NORTH SIDE OF A 12" PINE.	N75°W	24.09'
SET PK NAIL AND DISK STAMPED "SMT LB 6627" IN THE SOUTHEAST SIDE OF A 6" PINE.	N50°E	22.92'
SET PK NAIL AND DISK STAMPED "SMT LB 6627" IN THE SOUTHWEST SIDE OF A 7" PINE.	S20°E	38.94'

SURVEYORS CERTIFICATE: I certify the monument and accessories indicated above were field located on December 7, 1998.

James S. Richmond 4118

SIGNATURE LS NO.

12.18.98

DATE

Southern Mapping Technology, Inc. 6627

FIRM OR AGENCY LB NO.

4376 Corporate Square, Suite #1

ADDRESS

Naples, Florida 34104

CITY

STATE

Completeness checked by: *JSR*

Accepted and filed: 1-1-99

B.L.M. - I.D. 3300034 Date

D.E.P. USE ONLY

SEND TO:

Department of Environmental Protection
Bureau of Survey and Mapping
3900 Commonwealth Boulevard
Mail Station 105
Tallahassee, Florida 32399

DEP 63-001(16)
REV. 10/18/93
PAGE 2 OF 2

