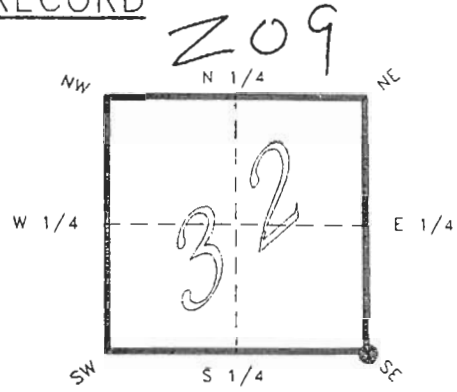


4223Z09

FLORIDA DEPARTMENT OF ENVIRONMENTAL PROTECTION  
CERTIFIED CORNER RECORD

CORNER DESCRIPTION:

S.E. corner of Section 32 ,  
Twp 42 S. , Rge 23 E. ,  
Tallahassee Base Meridian,  
CHARLOTTE County(s), Florida.



Depict corner with \_\_\_\_\_

MONUMENTATION DESCRIPTION:

Describe original monument and accessories, or subsequent restoration. Give sources of information. (If no attempt was made to search for the original monument and accessories, this information is not necessary.)

Description of corner evidence found:

CONCRETE MONUMENT

State method(s) to determine corner location (lost corners only):

HORIZONTAL POSITION INFORMATION ( if determined ):

Latitude 26°46'13.03710" N Longitude 82°01'18.64196" W  
Y(Northing) 269953.261 m X(Easting) 197827.518 m Zone FLW  
Convergence -0°00'35.421" Scale factor 0.99994123

Coordinate determination (circle one):

Field traverse GPS

Horizontal datum (circle one): NAD27 NAD83(1986) NAD83(1990) other (explain)

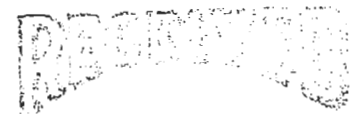
Order of accuracy as defined in "Standards and Specifications for Geodetic Control Networks" published by the Federal Geodetic Control Committee (circle one):

1st, 2nd, 3rd, class 1

or Minimum Technical Standards (Chapter 21HH-6, F.A.C.) ratio of closure for field data (example 1:10,000), \_\_\_\_\_ . This does not specify an order of accuracy.

Control point(s) used for survey: CHARLOTTE COUNTY HORIZONTAL CONTROL NETWORK INCLUDES HAVOLINE 2, PLACIDA 2, W260, PUNTPORT, & FLGPS 58 AS B ORDER STATIONS.

Comments:



FEB 20 1995

SURVEY & MAPPING

4223Z09

DOC. #

051050

SKETCH:

S.E. COR. SEC. 32 42/23  
FOUND CONC. MONUMENT



SET REF. CONC. MON.  
GPS OBSERVED  
N 269963.949 m  
E 197732.819 m

DISK 0591 IN  
10" PINE

30'

DISK 0593 IN  
12" PINE

DISK 0592 IN  
8" PINE

AERIAL TARGET

SET REF. CONC. MON.  
N 269929.163 m  
E 197893.839 m

BASIS OF BEARING SOLAR OBSERVATION

REFER: FB 285/26

REFERENCE MEASUREMENTS

Description	Bearing	Distance
DISK 0593 IN 12" PINE	S 80°11'10" W	36.69'
DISK 0592 IN 8" PINE	S 17°36'49" W	33.67'
DISK 0591 IN 10" PINE	S 88°24'26" E	52.05'
SET REF CONC. MON.	S 70°02'26" E	231.52'
SET REF CONC. MON.	N 83°34'14" W	312.68'
( GPS OBSERVED	N 83°33'37" W	GRID )

SURVEYORS CERTIFICATE: I certify the monument and accessories indicated above were field located on FEBRUARY 10, 19 94.

UPDATED 2/8/95

*R. Rose*  
SIGNATURE

PLS 4260

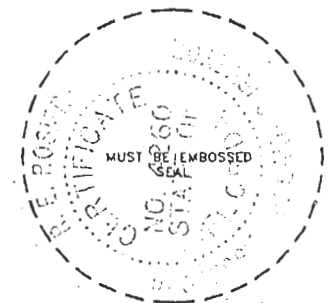
2-15-95  
DATE

CHARLOTTE COUNTY SURVEY DEPT.  
FIRM OR AGENCY

7000 FLORIDA STREET  
ADDRESS

PUNTA GORDA, FLA. 33950  
CITY STATE

473



Completeness checked by: *R. Rose*

Accepted and filed: 3-1-95

B.L.M. - I.D. 05323304

Date

D.N.R. USE ONLY

SEND TO:

Department of Environmental Protection  
Bureau of Survey and Mapping  
3900 Commonwealth Boulevard  
Mail Station 105  
Tallahassee, Florida 32399