

FLORIDA DEPARTMENT OF ENVIRONMENTAL PROTECTION

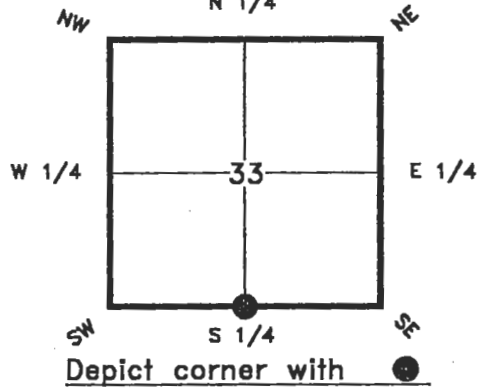
CERTIFIED CORNER RECORD

062851

211

CORNER DESCRIPTION:

South 1/4 corner of Section 33,
Twp 42 S, Rge 23 E,
Tallahassee Base Meridian,
Charlotte County, Florida



MONUMENTATION DESCRIPTION:

Describe original monument and accessories, or subsequent restoration. Give sources of information. (If no attempt was made to search for the original monument and accessories, this information is not necessary.)

Description of corner evidence found:

FOUND 3" X 3" TAPERED CONCRETE MONUMENT WITH AN "X" FORMED IN THE TOP.

State method(s) to determine corner location (lost corners only):

DEC 22 1993

HORIZONTAL POSITION INFORMATION (if determined):

Latitude N 26°46'13" Longitude W 82°00'49"
Y(NORTHING-Ft.) 269948.239 885655.180 X(EASTING-Ft.) 198639.393 651702.742 Zone FL-W
Convergence -0°00'22" Scale factor 0.9999412

Coordinate determination (circle one): Field traverse GPS

Horizontal datum (circle one): NAD27 NAD83(1986) NAD83(1990) other (explain)

Order of accuracy as defined in "Standards and Specifications for Geodetic Control Networks" published by the Federal Geodetic Control Committee (circle one):
1st, 2nd, 3rd, class 1.

or Minimum Technical Standards (Chapter 21HH-6, F.A.C.) ratio of closure for field data (example 1:10,000). This does not specify an order of accuracy.

Control point(s) used for survey:
TIE TO THE NORTH LINE OF THE NORTHWEST QUARTER OF SECTION 3, TOWNSHIP 43 SOUTH, RANGE 23 EAST, BUREAU OF SURVEY AND MAPPING MISCELLANEOUS FILE NUMBER 2331 & 2332.

Comments:
SMT FILE #98060

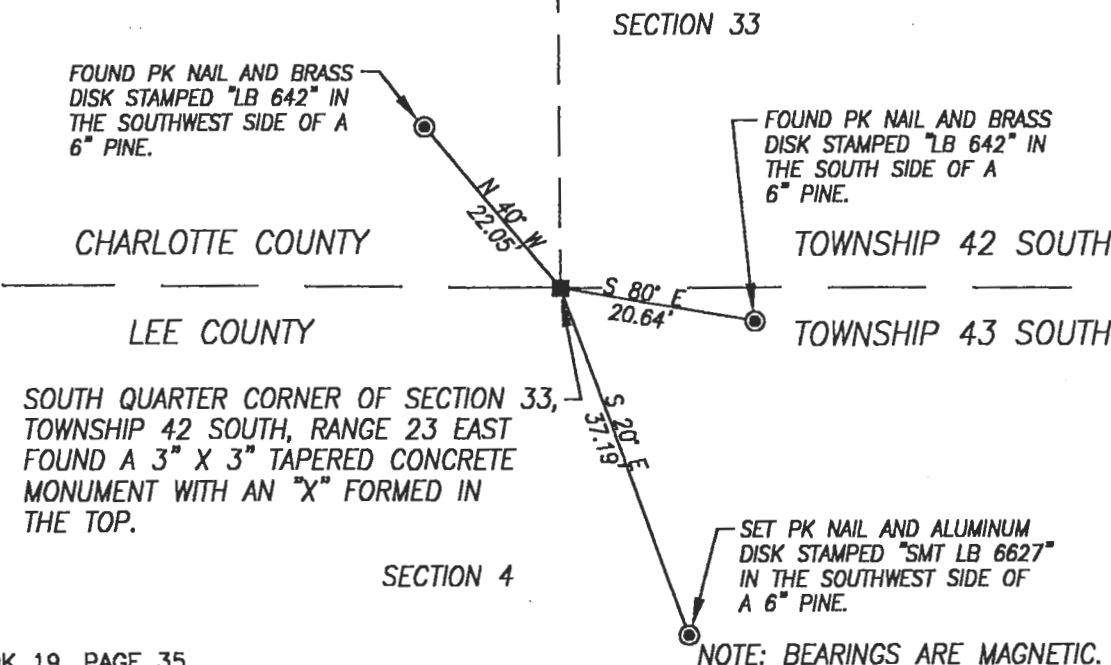
062851

SKETCH:



SCALE
1" = 20'

FIELD BOOK 19, PAGE 35.



NOTE: BEARINGS ARE MAGNETIC.

All bearings and distances must be from the corner to the witness. Indicate whether corner was found, set, or replaced and show north arrow.

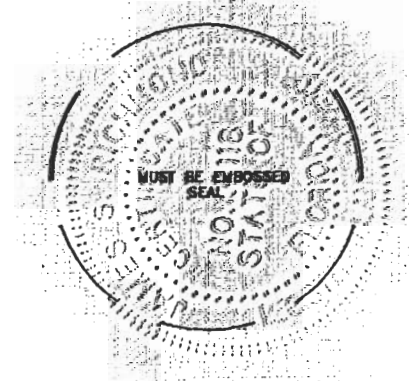
REFERENCE MEASUREMENTS (at least three vicinity references must be given below even if they appear on the above sketch):

Description	Bearing	Distance
FOUND PK NAIL AND BRASS DISK STAMPED "LB 642" IN THE SOUTHWEST SIDE OF A 6" PINE.	N40°W	22.05'
FOUND PK NAIL AND BRASS DISK STAMPED "LB 642" IN THE SOUTH SIDE OF A 6" PINE.	S80°E	20.64'
SET PK NAIL AND DISK STAMPED "SMT LB 6627" IN THE SOUTHWEST SIDE OF A 6" PINE.	S20°E	37.19'

SURVEYORS CERTIFICATE: I certify the monument and accessories indicated above were field located on December 7, 1998.

James S. Richmond 4118
 SIGNATURE DATE LS NO.
 12-18-98
 Southern Mapping Technology, Inc. 6627
 FIRM OR AGENCY LB NO.
 4376 Corporate Square, Suite #1
 ADDRESS
 Naples, Florida 34104
 CITY STATE

473



Completeness checked by: *[Signature]*
 Accepted and filed: 1-1-99 Date
 B.L.M. - I.D. *84C60033* D.E.P. USE ONLY

SEND TO:
 Department of Environmental Protection
 Bureau of Survey and Mapping
 3900 Commonwealth Boulevard
 Mail Station 105
 Tallahassee, Florida 32399