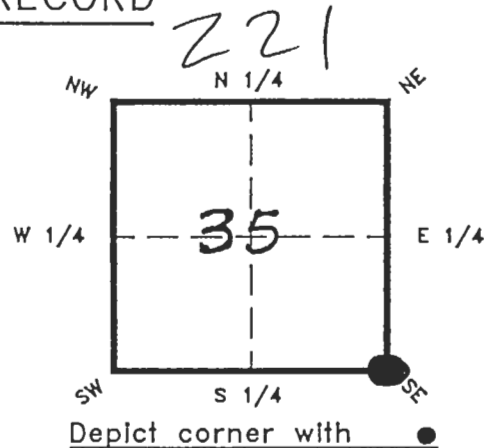


FLORIDA DEPARTMENT OF NATURAL RESOURCES
CERTIFIED CORNER RECORD

CORNER DESCRIPTION:

SE corner of Section 35,
Twp 42S/43S, Rge R 23 E
Tallahassee Base Meridian,
CHARLOTTE
LEE County(s), Florida.



MONUMENTATION DESCRIPTION:

Describe original monument and accessories, or subsequent restoration. Give sources of information. (If no attempt was made to search for the original monument and accessories, this information is not necessary.)

Description of corner evidence found:

State method(s) to determine corner location (lost corners only):

SINGLE PROPORTION BETWEEN FOUND MONUMENTS AT
32/33 T 42S R 23 E AND 36/31 T 42S R 23/24 E
5/4 T 43S R 23 E
HORIZONTAL POSITION INFORMATION (if determined):

Latitude 26°46'12.51140" N Longitude 81°58'22.37462" W
Y(Northing) 269937.183 X(Easting) 702696.902 Zone W
Convergence 0°00'43.972" Scale factor 0.99994127

Coordinate determination (circle one): Field traverse GPS

Horizontal datum (circle one): NAD27 NAD83(1986) NAD83(1990) other (explain)

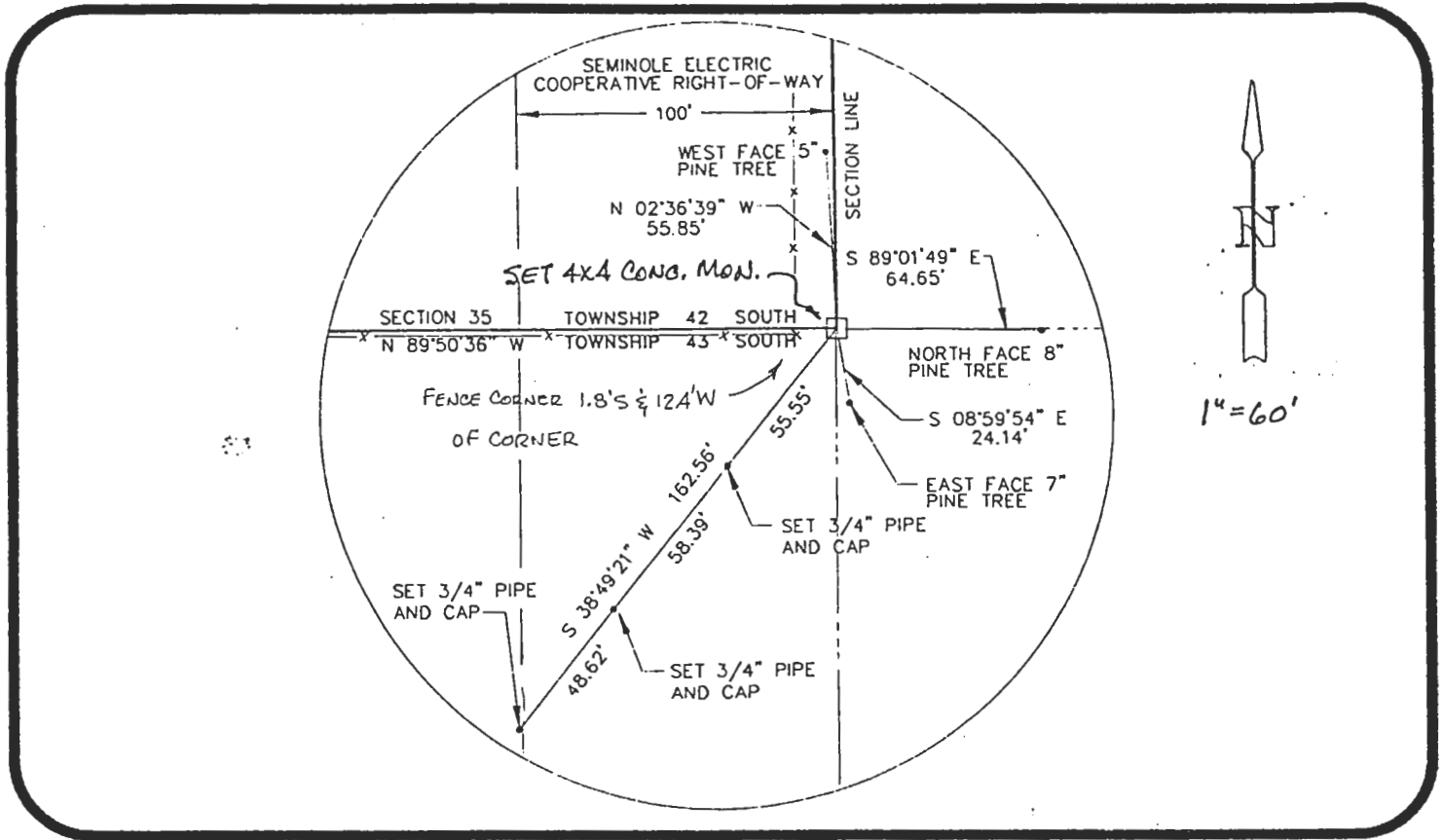
Order of accuracy as defined in "Standards and Specifications for Geodetic Control Networks" published by the Federal Geodetic Control Committee (circle one):
1st, 2nd 3rd, class II

or Minimum Technical Standards (Chapter 21HH-6, F.A.C.) ratio of closure for field data (example 1:10,000), _____ . This does not specify an order of accuracy.

Control point(s) used for survey:

Comments:

RECEIVED
APR 6 1995



All bearings and distances must be from the corner to the witness. Indicate whether corner was found, set, or replaced and show north arrow.

REFERENCE MEASUREMENTS (at least three vicinity references must be given below even if they appear on the above sketch):

Description	Bearing	Distance
SET PK & DISK IN 8" PINE TREE	S 89° 01' 49" E	64.65'
SET PK & DISK IN 7" PINE TREE	S 08° 59' 54" E	24.14'
SET 3/4" PIPE & CAP	S 38° 49' 21" W	55.55' & 113.94' & 162.56'
SET PK & DISK IN 5" PINE TREE	N 02° 36' 39" W	55.85'

SURVEYORS CERTIFICATE: I certify the monument and accessories indicated above were field located on FEBRUARY 6, 1995.

Michael L. Ham 2904
 SIGNATURE PLS NO.
 2-15-95
 DATE
 JOHNSON ENGINEERING, INC 642
 FIRM OR AGENCY L.B. NO.
 PO Box 1550
 ADDRESS
 FT. MYERS FL 33902
 CITY STATE



Completeness checked by: B. Luntz
 Accepted and filed: 5-1-95
 Date
 B.L.M. - I.D. 02353601 D.N.R. USE ONLY

SEND TO:
 Department of Natural Resources
 Bureau of Survey and Mapping
 3900 Commonwealth Boulevard
 Mail Station 105
 Tallahassee, Florida 32399