

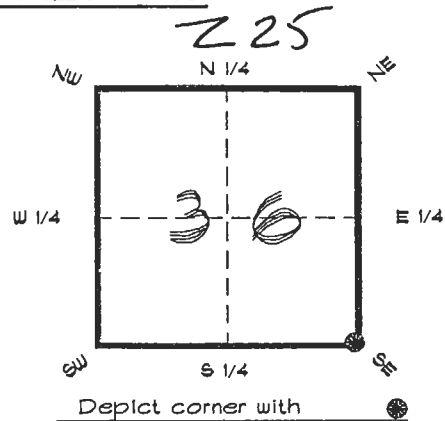
4223Z25

**FLORIDA DEPARTMENT OF ENVIRONMENTAL PROTECTION
CERTIFIED CORNER RECORD**

CORNER DESCRIPTION:

S. E. corner of Section 36,
Twp 42 S., Rge 23 E.,
Tallahassee Base Meridian,

CHARLOTTE County(s), Florida.
LEE



MONUMENTATION DESCRIPTION:

Describe original monument and accessories, or subsequent restoration. Give sources of information. (If no attempt was made to search for the original monument and accessories, this information is not necessary.)

RECEIVED

AUG 14 1995

Description of corner evidence found:

L'WOOD POST, REPLACED WITH CONCRETE MONUMENT SURVEY & MAPPING

State method(s) to determine corner location (lost corners only):

HORIZONTAL POSITION INFORMATION (if determined):

Latitude 26°46'12.35258"N Longitude 81°57'23.65828" W
Y(Northing) 269932.744 m X(Easting) 204318.994 m Zone FLW
Convergence 0°01'10.418" Scale factor 0.99994141

Coordinate determination (circle one): Field traverse GPS

Horizontal datum (circle one): NAD27 NAD83(1986) NAD83(1990) other (explain)

Order of accuracy as defined in Standards and Specifications for Geodetic Control Networks "published by the Federal Geodetic Control Committee (circle one):
1st, 2nd, 3rd, class 2

or Minimum Technical Standards (Chapter 6IG17, F.A.C.) ratio of closure for field data (example 1:10,000), _____ . This does not specify an order of accuracy.

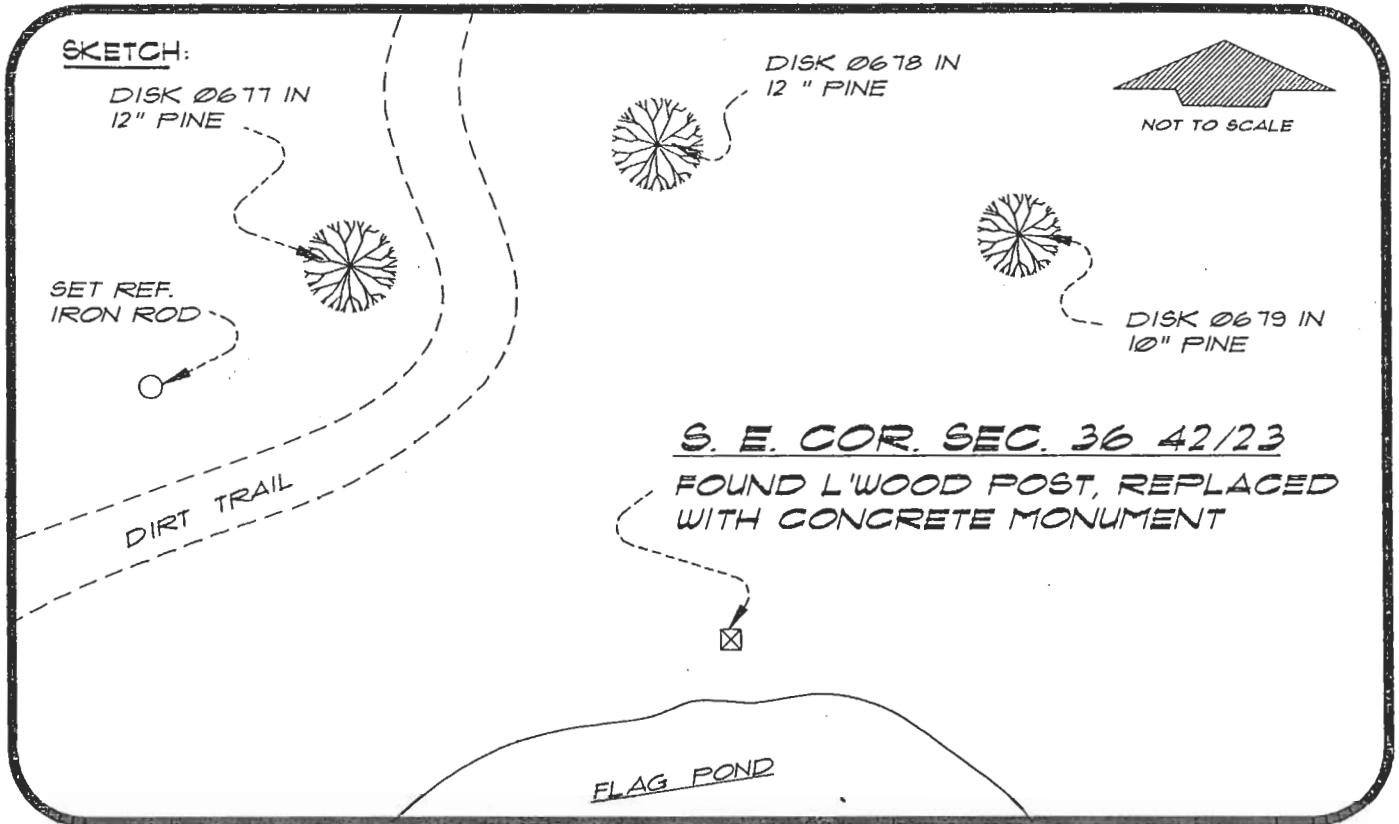
Control point(s) used for survey: CHARLOTTE COUNTY HORIZONTAL CONTROL NETWORK INCLUDES HAYOLINE 2, PLACIDA 2, W260, PUNTPORT, & FLGPS 5B AS B ORDER STATIONS.

Comments:

STATE PLANE COORDINATES FROM JOHNSON ENGR. INC.
C.C.R. # 051546

4223Z25

DOC. #



S. E. COR. SEC. 36 42/23
 FOUND L'WOOD POST, REPLACED
 WITH CONCRETE MONUMENT

BASIS OF BEARING SOLAR OBSERVATION REFER: FB 285/64
 SET SURVEY MARKER POSTS 3' N'LY, W'LY & S'LY

REFERENCE MEASUREMENTS

<u>Description</u>	<u>Bearing</u>	<u>Distance</u>
DISK 0677 IN 12" PINE	N 44°59'08" W	235.33'
DISK 0678 IN 12" PINE	N 09°03'15" W	263.65'
DISK 0679 IN 10" PINE	N 31°00'59" E	236.80'
SET REF. IRON ROD	N 66°09'37" W	260.33'

SURVEYORS CERTIFICATE: I certify the monument and accessories indicated above
 were field located on APRIL 4, 1994

R. P. ROSE PLS 4260
 SIGNATURE
August 9, 1995
 DATE
CHARLOTTE COUNTY SURVEY DEPT.
 FIRM OR AGENCY
1000 FLORIDA STREET
 ADDRESS
PUNTA GORDA, FLORIDA 33950
 CITY STATE

472
 Glickman



Completeness checked by: [Signature]
 Accepted and filed: 9-1-95 Date
 B.L.M. - I.D. 01763106 D.E.P. USE ONLY

SEND TO:
 Department of Environmental Protection
 Bureau of Survey and Mapping
 3900 Commonwealth Boulevard
 Mail Station 105
 Tallahassee, Florida 32399