

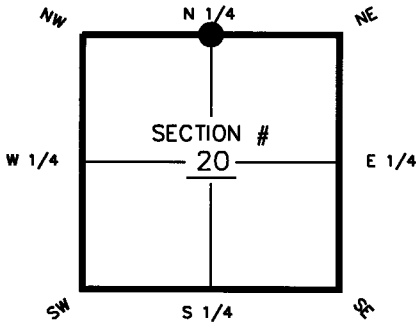
FLORIDA DEPARTMENT OF ENVIRONMENTAL PROTECTION
CERTIFIED CORNER RECORD

092738

DOC. # _____

CORNER DESCRIPTION: MONUMENTATION DESCRIPTION (EVIDENCE FOUND OR METHOD TO SET)

Depict corner with ●

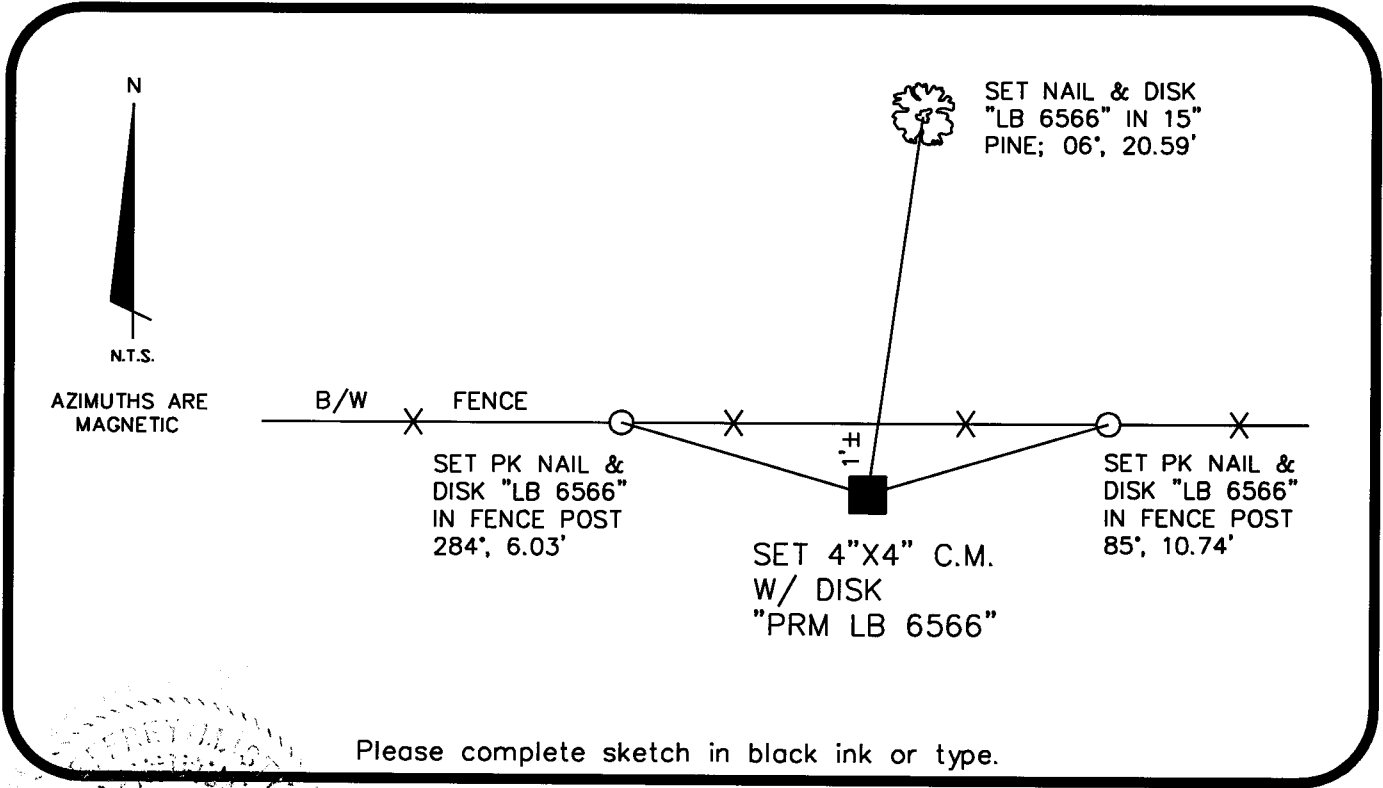


SET 4"X4" CONCRETE MONUMENT W/ DISK "PRM LB 6566".
 MONUMENT WAS SET ON A PROPORTIONAL BASIS BETWEEN
 FOUND NW & NE CORNERS OF SECTION 20 ACCORDING
 TO INFORMATION SHOWN ON FLORIDA DEPARTMENT OF
 TRANSPORTATION I-75 RIGHT-OF-WAY MAP 01075-2401.

HORIZONTAL POSITION INFORMATION (if determined):

Latitude 26°-48'-51.47910" Longitude 81°-55'-53.10910"
 Y(NORTHING-Ft.) 901675.139 X(EASTING-Ft.) 678534.489 Zone WEST
 Convergence 0°-01'-51.4" Scale factor 0.99994175
 Coordinate determination (circle one): Field traverse (GPS)
 Horizontal datum (circle one): NAD27 NAD83(1986) (NAD83(1990)) other (explain)
 Accuracy (circle one): 1st 2nd (3rd) other _____

N1/4 corner of Section 20
 Twp 42S, Rge 24E
 Tallahassee Base Meridian,
 CHARLOTTE County(s), Florida



SURVEYORS CERTIFICATE:

I certify the monument and accessories indicated above were field located on 10-11-07

Jeff M. Stue
 SIGNATURE 6389
 MCKIM & CREED PSM NO. 6566
 FIRM OR AGENCY LB NO.
 10970 SOUTH CLEVELAND AVE., SUITE 401
 ADDRESS
 FORT MYERS FL 33907
 CITY STATE ZIP
 (239) 275-8875 10-30-07
 PHONE NUMBER DATE

SEND ORIGINAL TO:
 Department of Environmental Protection
 Bureau of Surveying and Mapping
 3900 Commonwealth Boulevard
 Mail Station 105
 Tallahassee, Florida 32399

D.E.P. USE ONLY
 Processed: 11-8-07 MB
 B.L.M. - I.D. 240400
 QUAD - I.D. 2316 Gilchrist

EMBOSSSED SEAL OVER SIGNATURE