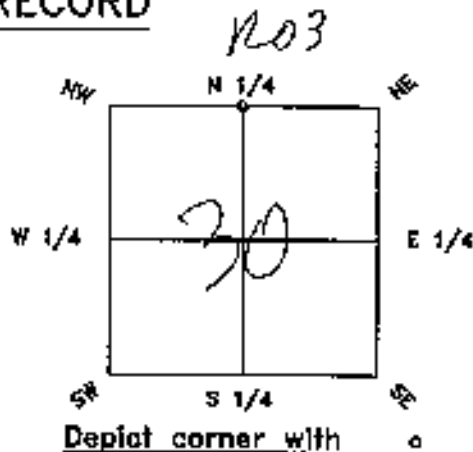


FLORIDA DEPARTMENT OF ENVIRONMENTAL PROTECTION
CERTIFIED CORNER RECORD

CORNER DESCRIPTION:

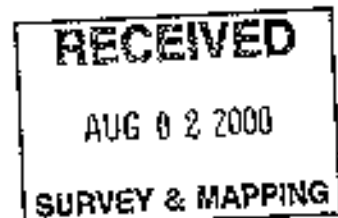
NORTH 1/4 corner of Section 30,
 Twp 42 S., Rge 24 E.,
 Tallahassee Base Meridian,
CHARLOTTE County(s), Florida.



MONUMENTATION DESCRIPTION:

Describe original monument and accessories, or subsequent restoration. Give sources of information. (If no attempt was made to search for the original monument and accessories, this information is not necessary.)

Description of corner evidence found:
 FOUND 3"X3" CONCRETE MONUMENT, NO ID



State method(s) to determine corner location (lost corners only):

HORIZONTAL POSITION AND HEIGHT INFORMATION (If determined):

Latitude _____ Longitude _____
 Y(NORTHING-Ft.) 896312.01 X(EASTING-Ft.) 673093.53 Zone WEST
 Convergence _____ Scale factor _____

Coordinate determination (circle one): Field traversa GPS
 Horizontal datum (circle one): NAD27 NAD83(1986) NAD83(1990) other (explain)

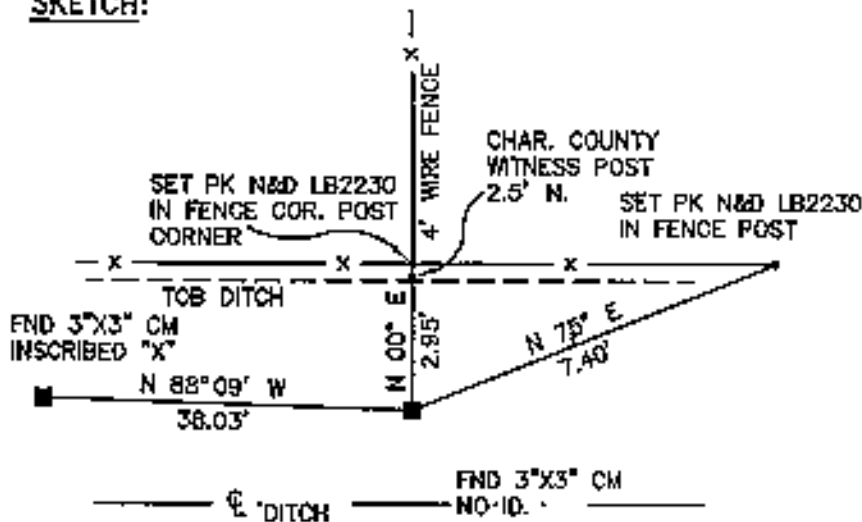
Order of accuracy as defined in "Standards and Specifications for Geodetic Control Networks" published by the Federal Geodetic Control Committee
 Circle one: 1st, 2nd, 3rd order _____
 or Minimum Technical Standards (Chapter 61G17-6.003, F.A.C.) ratio of closure for field data (example 1:10,000), _____ . This does not specify an order of accuracy.

Vertical datum (circle one): NGVD 1929 NAVD1988 Other _____
 Height _____ Ft.
 Order of accuracy: _____

SKETCH:

LEGEND

- IR IRON ROD
- CM 4" X4" CONCRETE MONUMENT
- PK&D PARKER KALON NAIL & DISK
- N&D NAIL & DISK
- FND. FOUND
- RGE RANGE
- TWP TOWNSHIP
- SEC SECTION
- COR CORNER
- IP IRON PIPE
- DEPT DEPARTMENT
- PL PROPERTY LINE
- CL CENTER LINE
- FDOT FLORIDA DEPARTMENT OF TRANSPORTATION
- SRD STATE ROAD DEPARTMENT



NORTH 1/4 CORNER SEC. 30-42-24

PLEASE COMPLETE IN BLACK INK OR TYPE

All bearings and distances must be from the corner to the witness. Indicate whether corner was found, set, or replaced and show north arrow.

REFERENCE MEASUREMENTS (at least three vicinity references must be given below even if they appear on the above sketch):

Description	Bearing	Distance
SET PK NAIL & DISK LB2230 IN FENCE COR.	N 00° E	2.95'
SET PK NAIL & DISK LB 2230 IN FENCE POST	N 75° E	7.40'
FOUND 3"x3" CONCRETE MONUMENT, "X" INSCRIBED	N 88° 09' W	38.03'

SURVEYORS CERTIFICATE: I certify the monument and accessories indicated above were field located on JUNE 1, 2000.

R.E.M. EDGERSON P.S.M. 4292

JULY 26, 2000

ZOLLER, NAJJAR & SHROYER, L.C. LB6982

P.O. BOX 9448 223 6TH AVENUE EAST

BRADENTON FL 34208

D.E.P. USE ONLY

Completeness checked by: *[Signature]*

Accepted and filed: *B-4-00*

B.L.M. - I.D. *140700* Date

QUAD - I.D. *412*

SEND TO:

Department of Environmental Protection,
Bureau of Survey and Mapping
3900 Commonwealth Boulevard
Mail Station 105
Tallahassee, Florida 32399

DEP 63-001(16)
REV. 03/19/97
PAGE 2 OF 2

