

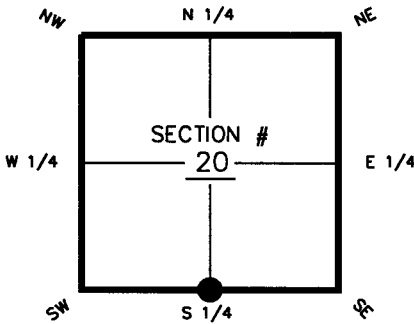
FLORIDA DEPARTMENT OF ENVIRONMENTAL PROTECTION  
CERTIFIED CORNER RECORD

092739

DOC. # \_\_\_\_\_

CORNER DESCRIPTION:      MONUMENTATION DESCRIPTION (EVIDENCE FOUND OR METHOD TO SET)

Depict corner with ●

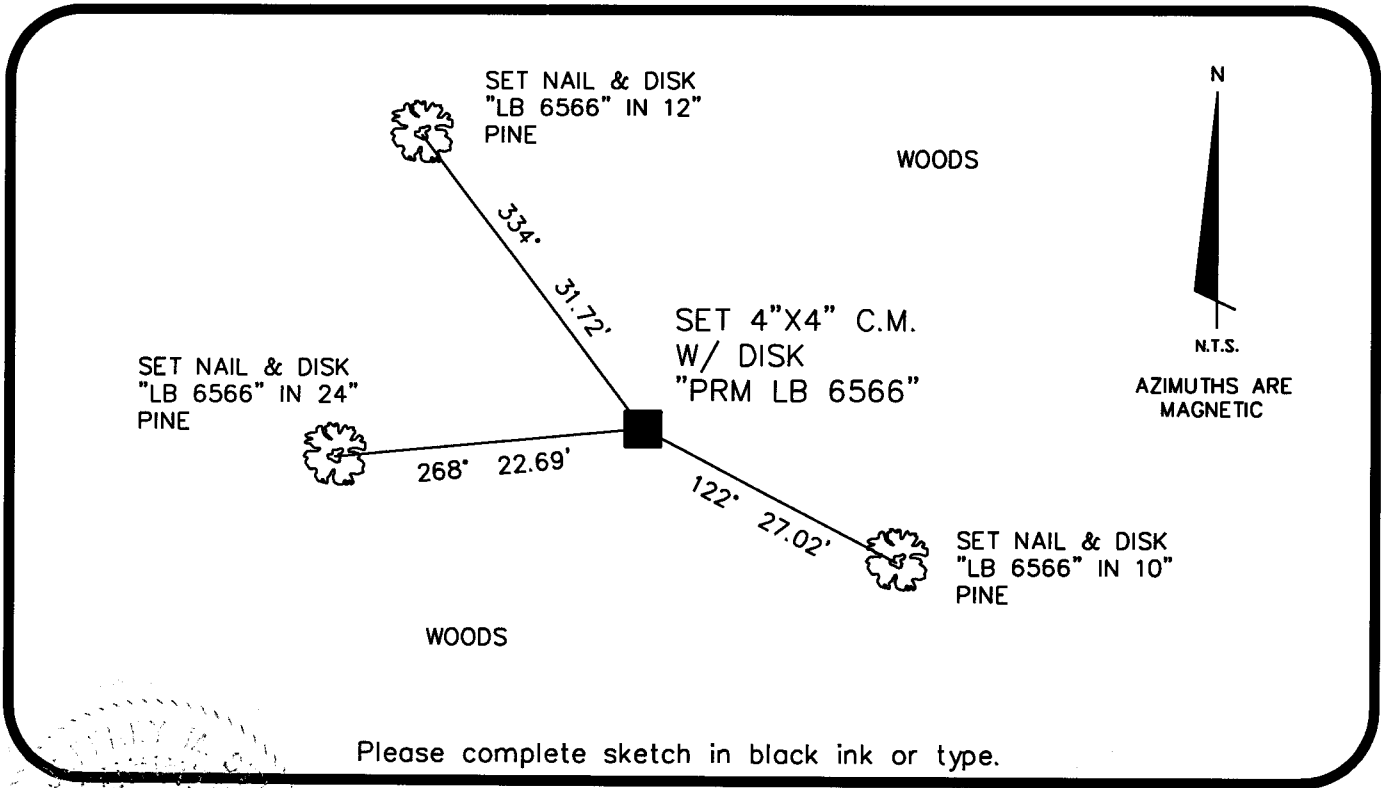


SET 4"X4" CONCRETE MONUMENT W/ DISK "PRM LB 6566"  
 BY SINGLE PROPORTION BETWEEN SW & SE CORNERS  
 OF SECTION 20

HORIZONTAL POSITION INFORMATION ( if determined ):

Latitude 26°-47'-57.36352" Longitude 81°-55'-54.10593"  
 Y(NORTHING-Ft.) 896210.969 X(EASTING-Ft.) 678447.116 Zone WEST  
 Convergence 0°-01'-50.9" Scale factor 0.99994175  
 Coordinate determination (circle one):      Field traverse (GPS)  
 Horizontal datum (circle one):      NAD27    NAD83(1986) (NAD83(1990)) other (explain)  
 Accuracy (circle one):      1st      2nd      (3rd)      other \_\_\_\_\_

S1/4 corner of Section 20  
 Twp 42S, Rge 24E  
 Tallahassee Base Meridian,  
 CHARLOTTE County(s), Florida



SURVEYORS CERTIFICATE:

I certify the monument and accessories indicated above were field located on 10-16-07

*[Signature]*      6389  
 SIGNATURE      PSM NO.  
 MCKIM & CREED      6566  
 FIRM OR AGENCY      LB NO.  
 10970 SOUTH CLEVELAND AVE., SUITE 401  
 ADDRESS  
 FORT MYERS      FL      33907  
 CITY      STATE      ZIP  
 (239) 275-8875      10-30-07  
 PHONE NUMBER      DATE

SEND ORIGINAL TO:  
 Department of Environmental Protection  
 Bureau of Surveying and Mapping  
 3900 Commonwealth Boulevard  
 Mail Station 105  
 Tallahassee, Florida 32399

D.E.P. USE ONLY

Processed: 11-8-07 TMB

B.L.M. - I.D. 240300

QUAD - I.D. 2316 Gilchrist

EMBOSSSED SEAL OVER SIGNATURE