

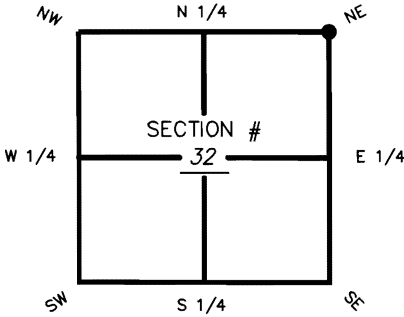
FLORIDA DEPARTMENT OF ENVIRONMENTAL PROTECTION
CERTIFIED CORNER RECORD

100914

DOC. # _____

CORNER DESCRIPTION: MONUMENTATION DESCRIPTION (EVIDENCE FOUND OR METHOD TO SET)

Depict corner with ●

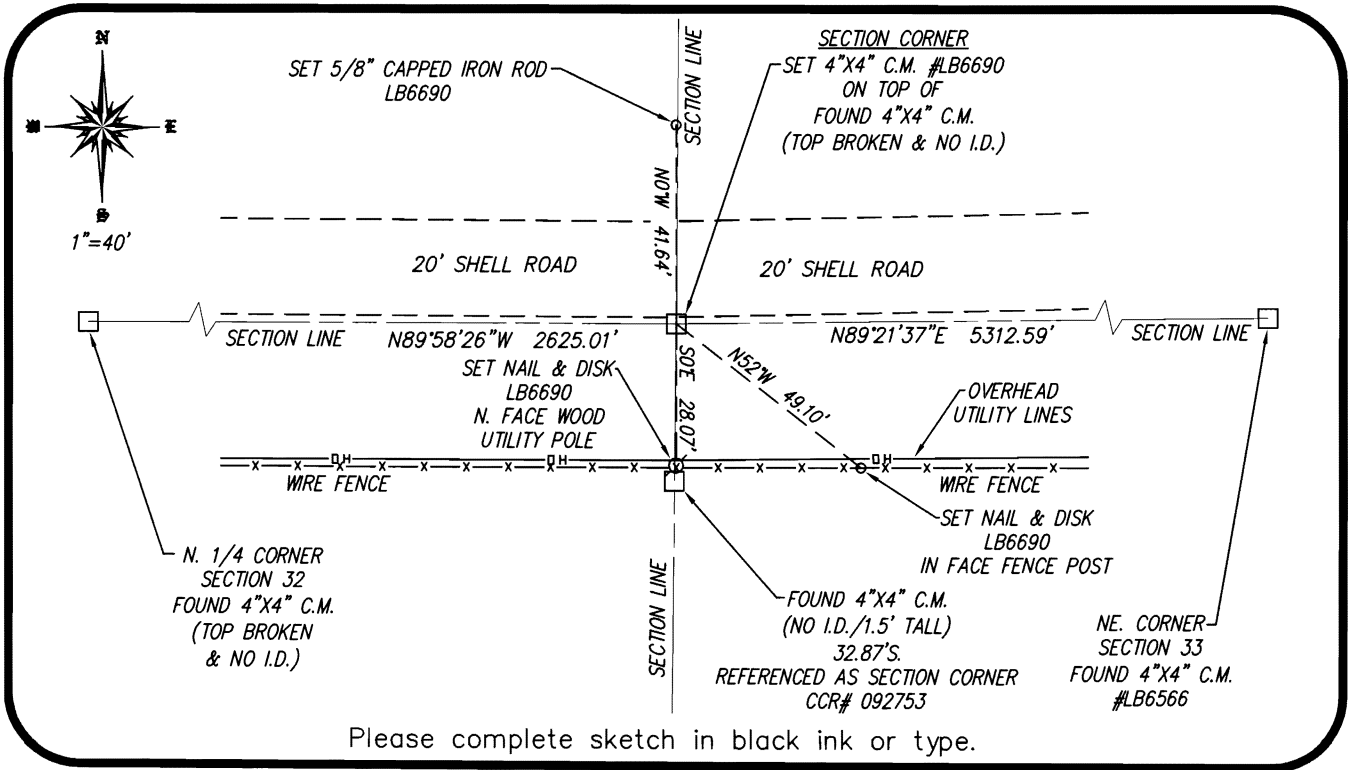


SET 4"x4" CONCRETE MONUMENT #LB6690 ON TOP OF FOUND 4"x4" CONCRETE MONUMENT WITH BROKEN TOP AND NO I.D.

HORIZONTAL POSITION INFORMATION (if determined):

Latitude 26°47'04.66209" Longitude 81°55'25.57524"
 Y(NORTHING-Ft.) 890891.12 X(EASTING-Ft.) 681035.47 Zone WEST
 Convergence 00°02'04" Scale factor 0.99994188
 Coordinate determination (circle one): Field traverse (GPS)
 Horizontal datum (circle one): NAD27 NAD83(1986) (NAD83(1990)) other (explain) _____
 Accuracy (circle one): 1st 2nd (3rd) other _____

NE corner of Section 32
 Twp 42S, Rge 24E
 Tallahassee Base Meridian,
 CHARLOTTE County(s), Florida



Please complete sketch in black ink or type.

SURVEYORS CERTIFICATE:

I certify the monument and accessories indicated above were field located on 8-9-2010

[Signature] 4684
 SIGNATURE PSM NO.
BANKS ENGINEERING 6690
 FIRM OR AGENCY LB NO.
12653 SW COUNTY ROAD 769 SUITE B
 ADDRESS
LAKE SUZY FL 34269
 CITY STATE ZIP
(941) 625-1165 8-31-2010
 PHONE NUMBER DATE

SEND ORIGINAL TO:
 Department of Environmental Protection
 Bureau of Surveying and Mapping
 3900 Commonwealth Boulevard
 Mail Station 105
 Tallahassee, Florida 32399

D.E.P. USE ONLY
 Processed: 1-28-11 WLE
 B.L.M. - I.D. 300200
 QUAD - I.D. 2316 GILCHRIST

EMBOSSSED SEAL OVER SIGNATURE