

4024V17

DOC =

051091

FLORIDA DEPARTMENT OF ENVIRONMENTAL PROTECTION CERTIFIED CORNER RECORD

V17

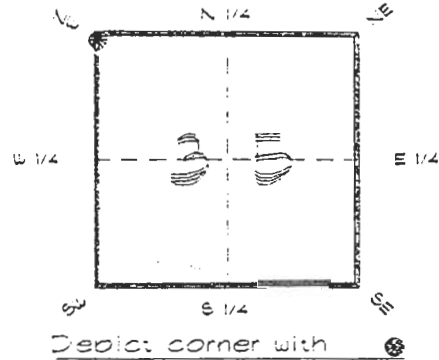
CORNER DESCRIPTION:

N. W. corner of Section 35

Twp 42 S., Rge 24 E.

Tallahassee Base Meridian.

CHARLOTTE County(s), Florida.



MONUMENTATION DESCRIPTION:

Describe original monument and accessories, or subsequent restoration. Give sources of information. (If no attempt was made to search for the original monument and accessories, this information is not necessary.)

Description of corner evidence found:

CONCRETE MONUMENT

State method(s) to determine corner location (lost corners only):

HORIZONTAL POSITION INFORMATION (if determined):

Latitude 26°47'05.78681" N Longitude 81°53'26.92386" W

Y(Northing) 271581.160 m X(Easting) 210857.330 m Zone FLW

Convergence 0°02'57.137" Scale factor 0.99994263 m

Coordinate determination (circle one): Field traverse GPS

Horizontal datum (circle one): NAD27 NAD83(1986) NAD83(1990) other (explain)

Order of accuracy as defined in "Standards and Specifications for Geodetic Control Networks" published by the Federal Geodetic Control Committee (circle one):

1st, 2nd, 3rd, class 1

or Minimum Technical Standards (Chapter 21HH-6, F.A.C.) ratio of closure for field data (example 1:10,000). This does not specify an order of accuracy.

Control point(s) used for survey: CHARLOTTE COUNTY HORIZONTAL CONTROL NETWORK INCLUDES HAYOLINE 2, PLACIDA 2, W260 FUJNTPORT & FLGPS 58 AS 5 ORDER STATIONS.

Comments:



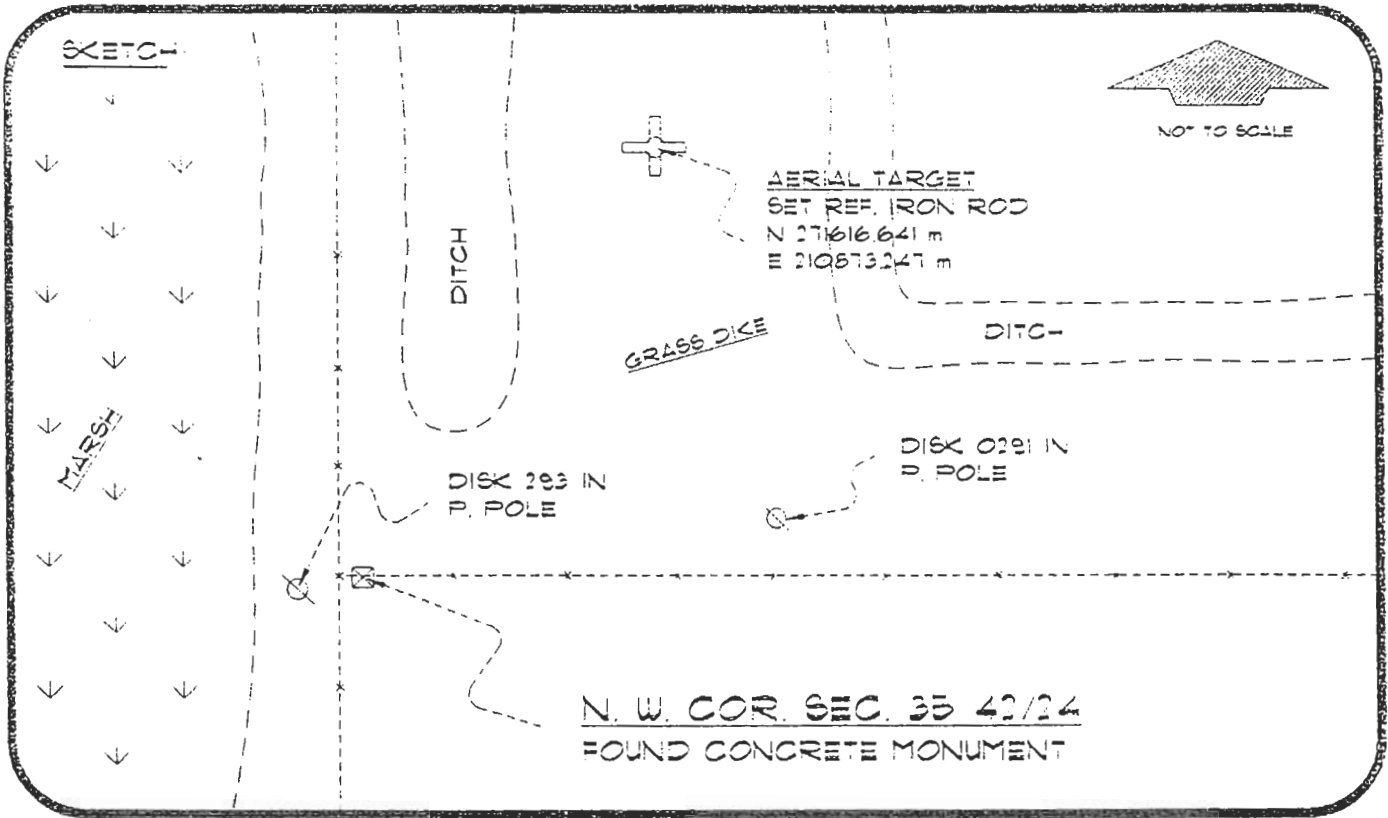
FEB 20 1993

SURVEY & MAPPING

4224V17

DOC. #

051091



BASIS OF BEARING SOLAR OBSERVATION
SET SURVEY MARKER POST 1" NLY

REFER: FS 302/02

REFERENCE MEASUREMENTS

| Description | Bearing | Distance |
|----------------------|---------------|----------|
| DISK 0293 IN P. POLE | S 80°29'17" W | 3.91' |
| DISK 0291 IN P. POLE | N 85°56'31" E | 83.96' |
| AERIAL TARGET | N 24°12'39" E | 127.59' |

SURVEYORS CERTIFICATE: I certify the monument and accessories indicated above were field located on SEPTEMBER 8, 1993

R. P. Rose PLS 4260
SIGNATURE

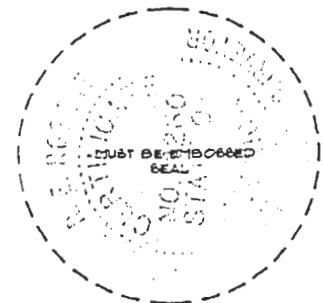
2-15-95
DATE

CHARLOTTE COUNTY SURVEY DEPT.
FIRM OR AGENCY

1000 FLORIDA STREET
ADDRESS

PUNTA GORDA FLA. 33950
CITY STATE

UPDATED 2/15/95



472
GUCHRIST

Completeness checked by: B. Linton
Accepted and filed: 3-1-95 Date
BLM - 10 34272635 DNR USE ONLY

SEND TO:
Department of Environmental Protection
Bureau of Survey and Mapping
3900 Commonwealth Boulevard
Mail Station 105
Tallahassee Florida 32399