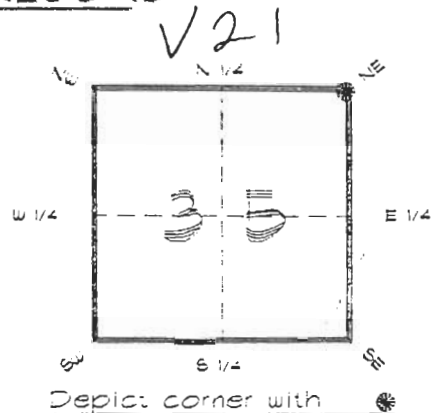


FLORIDA DEPARTMENT OF ENVIRONMENTAL PROTECTION  
CERTIFIED CORNER RECORD

CORNER DESCRIPTION:

N. E. corner of Section 35,  
Twp 42 S., Rge 24 E.,  
Tallahassee Base Meridian,  
CHARLOTTE County(s), Florida.



MONUMENTATION DESCRIPTION:

Describe original monument and accessories, or subsequent restoration. Give sources of information. (If no attempt was made to search for the original monument and accessories, this information is not necessary.)

Description of corner evidence found:

CONCRETE MONUMENT

State method(s) to determine corner location (lost corners only):

HORIZONTAL POSITION INFORMATION (if determined):

Latitude 26°47'05.69999"N Longitude 81°52'29.09587" W  
Y(Northing) 271579.961 m X(Easting) 212454.626 m Zone FLW  
Convergence 0°03'23.197" Scale factor 0.99994309

Coordinate determination (circle one): Field traverse (GPS)

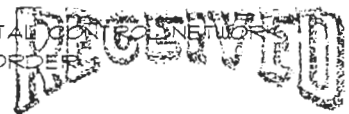
Horizontal datum (circle one): NAD27 NAD83(1986) NAD83(1990) other (explain)

Order of accuracy as defined in "Standards and Specifications for Geodetic Control Networks" published by the Federal Geodetic Control Committee (circle one): 1st, 2nd, 3rd, class 1

or Minimum Technical Standards (Chapter 21HH-6, F.A.C.) ratio of closure for field data (example 1:10,000), This does not specify an order of accuracy.

Control point(s) used for survey: CHARLOTTE COUNTY HORIZONTAL CONTROL NETWORK INCLUDES HAYOLINE 2, PLACIDA 2, W260, PUNTPORT, & FLGPS 58 AS B ORDER STATIONS.

Comments:



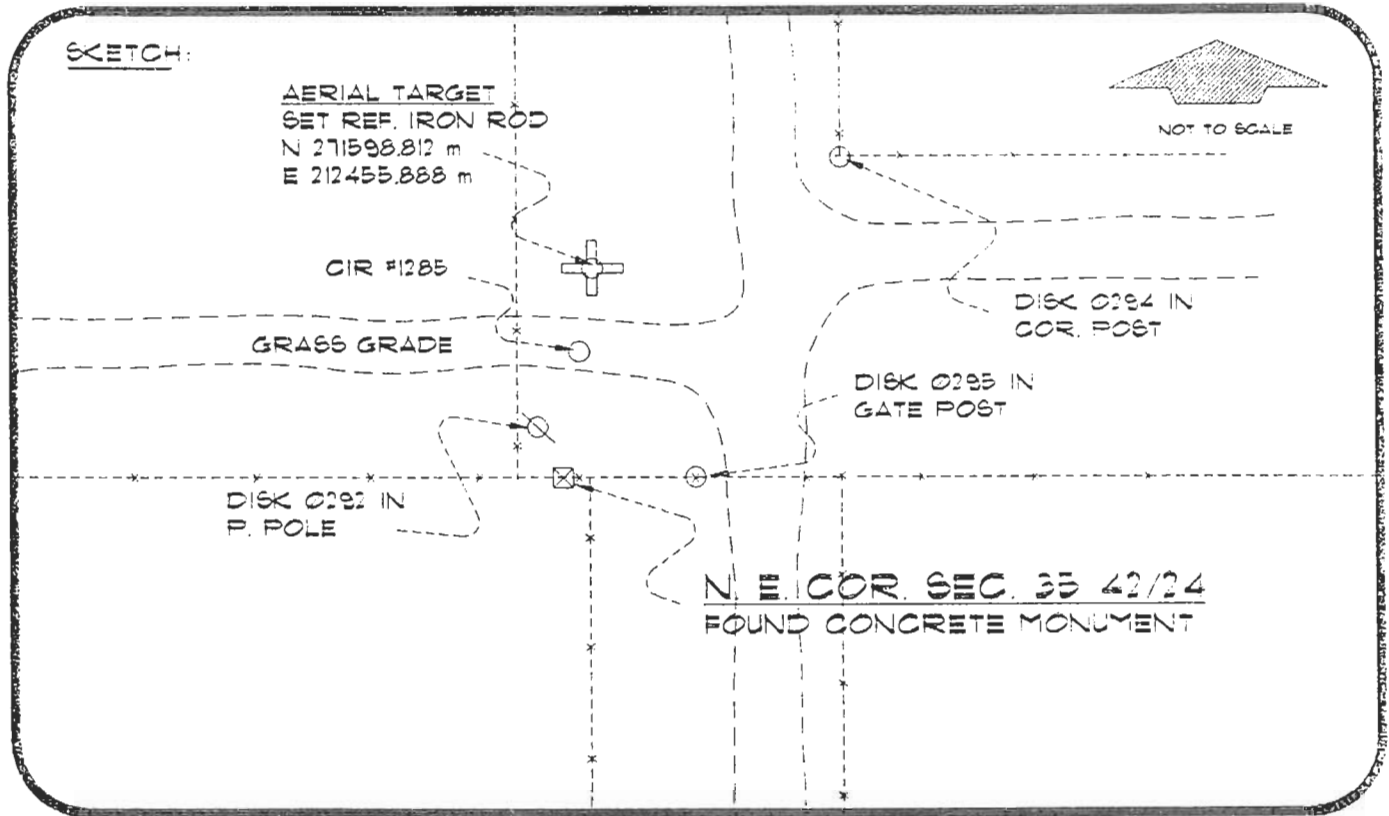
FEB 20 1995

SURVEY & MAPPING

4224V21

DOC. #

051092



BASIS OF BEARING SOLAR OBSERVATION  
SET SURVEY MARKER POST 2' N'LY

REFER: FB 302/05

REFERENCE MEASUREMENTS

| Description            | Bearing       | Distance |
|------------------------|---------------|----------|
| DISK 0294 IN COR. POST | N 28°01'13" E | 140.61'  |
| DISK 0295 IN GATE POST | N 88°49'37" E | 24.14'   |
| DISK 0292 IN P. POLE   | N 10°49'49" W | 7.01'    |
| CIR #1285              | N 03°53'13" E | 30.17'   |
| AERIAL TARGET          | N 03°53'13" E | 61.99'   |

SURVEYORS CERTIFICATE: I certify the monument and accessories indicated above  
were field located on SEPTEMBER 8, 1993

*R. Ross*

SIGNATURE

PLS 4260

UPDATED 2/15/95

2-15-95

DATE

CHARLOTTE COUNTY SURVEY DEPT.

FIRM OR AGENCY

7000 FLORIDA STREET

ADDRESS

PUNTA GORDA, FLA. 33950

CITY

STATE



471

Completeness checked by: B. Hunter

Accepted and filed: 3-1-95 Date

BLM. - ID. 35262536 DNR. USE ONLY

SEND TO:

Department of Environmental Protection  
Bureau of Survey and Mapping  
3900 Commonwealth Boulevard  
Mail Station 125  
Tallahassee, Florida 32399