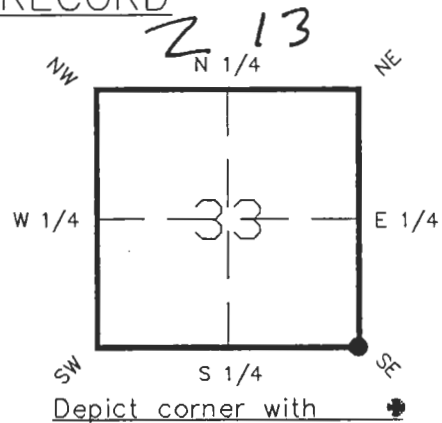


FLORIDA DEPARTMENT OF NATURAL RESOURCES
CERTIFIED CORNER RECORD

CORNER DESCRIPTION:

SOUTHEAST corner of Section 33 ,
Twp 42 S , Rge 24 E ,
Tallahassee Base Meridian,
CHARLOTTE County(s), Florida.



MONUMENTATION DESCRIPTION:

Describe original monument and accessories, or subsequent restoration. Give sources of information. (If no attempt was made to search for the original monument and accessories, this information is not necessary.)

Description of corner evidence found:

4"x4" CONCRETE MONUMENT

State method(s) to determine corner location (lost corners only):

HORIZONTAL POSITION INFORMATION (if determined):

Latitude _____ Longitude _____
Y(Northing) _____ X(Easting) _____ Zone _____
Convergence _____ Scale factor _____

Coordinate determination (circle one): Field traverse GPS
Horizontal datum (circle one): NAD27 NAD83(1986) NAD83(1990) other (explain)

Order of accuracy as defined in "Standards and Specifications for Geodetic Control Networks" published by the Federal Geodetic Control Committee (circle one):
1st, 2nd, 3rd, class _____ ,

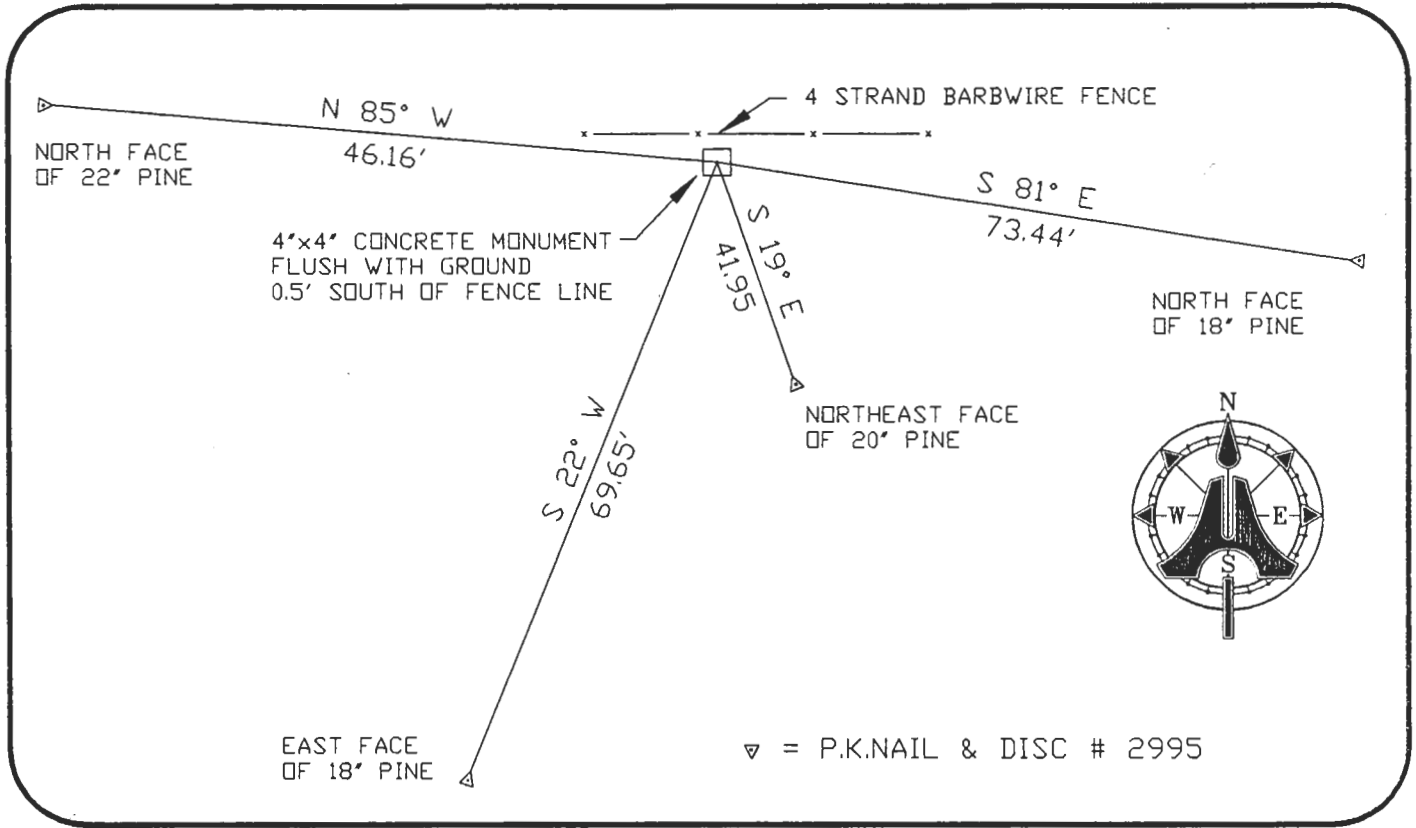
or Minimum Technical Standards (Chapter 21HH-6, F.A.C.) ratio of closure for field data (example 1:10,000), _____ . This does not specify an order of accuracy.

Control point(s) used for survey:

Comments:

SKETCH:

DOC. #



All bearings and distances must be from the corner to the witness. Indicate whether corner was found, set, or replacer and show north arrow.

REFERENCE MEASUREMENTS (at least three vicinity references must be given below even if they appear on the above sketch):

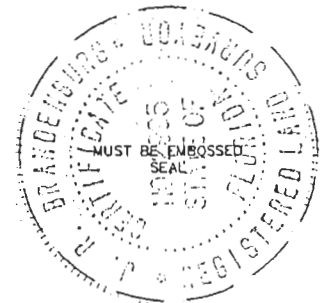
Description	Bearing	Distance
P.K.NAIL & DISC # 2995 NORTH FACE OF 18' PINE	S 81° E	73.44'
P.K.NAIL & DISC # 2995 NORTHEAST FACE OF 20' PINE	S 19° E	41.95'
P.K.NAIL & DISC # 2995 EAST FACE OF 18' PINE	S 22° W	69.65'
P.K.NAIL & DISC # 2995 NORTH FACE OF 22' PINE	N 85° W	46.16'

SURVEYORS CERTIFICATE: I certify the monument and accessories indicated above were field located on JANUARY 4, 1994

J. R. Brandenburg 2995
SIGNATURE - PLS NO. 2995
FEBRUARY 4, 1994
Date

AIM ENGINEERING AND SURVEYING, INC.
FIRM OR AGENCY
5300 LEE BOULEVARD P.O. BOX 1235
ADDRESS
LEHIGH ACRES FLORIDA 33970-1235
CITY STATE

472



Completeness checked by: B. Linton
Accepted and filed: 3-1-94
B.L.M. - I.D. 04333403 D.N.R. USE ONLY

SEND TO:

Department of Natural Resources DNR 53-001(16)
Bureau of Survey and Mapping REV. 2/7/91
3900 Commonwealth Boulevards PAGE 2 OF 2
Mail Station 105
Tallahassee, Florida 32399