

SEE DOC. NO. 055501

4225A25

DOC. #

056817

FLORIDA DEPARTMENT OF ENVIRONMENTAL PROTECTION
CERTIFIED CORNER RECORD

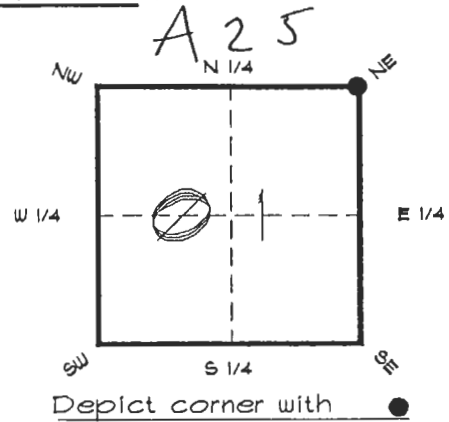
CORNER DESCRIPTION:

N. E. corner of Section 01,

Twp 42 S., Rge 25 E.,

Tallahassee Base Meridian,

CHARLOTTE County(s), Florida.



MONUMENTATION DESCRIPTION:

Describe original monument and accessories, or subsequent restoration. Give sources of information. (If no attempt was made to search for the original monument and accessories, this information is not necessary.)

Description of corner evidence found:

RECEIVED

JUL 25 1996

State method(s) to determine corner location (lost corners only):

SURVEY & MAPPING

PK NAIL & TIN BY RETRACEMENT OF K. ROAN SURVEY 1991

HORIZONTAL POSITION INFORMATION (if determined):

Latitude 26°51'27.71288" N Longitude 81°45'34.71223" W

Y(Northing) 279660.212 m X(Easting) 223885.271 m Zone FLW.

Convergence 0°06'30.918" Scale factor 0.99994822

Coordinate determination (circle one): Field traverse GPS

Horizontal datum (circle one): NAD27 NAD83(1986) NAD83(1990) other (explain)

Order of accuracy as defined in "Standards and Specifications for Geodetic Control Networks" published by the Federal Geodetic Control Committee (circle one):

1st, 2nd, 3rd, class 1

or Minimum Technical Standards (Chapter 21HH-6, F.A.C.) ratio of closure for field data (example 1:10,000), . This does not specify an order of accuracy.

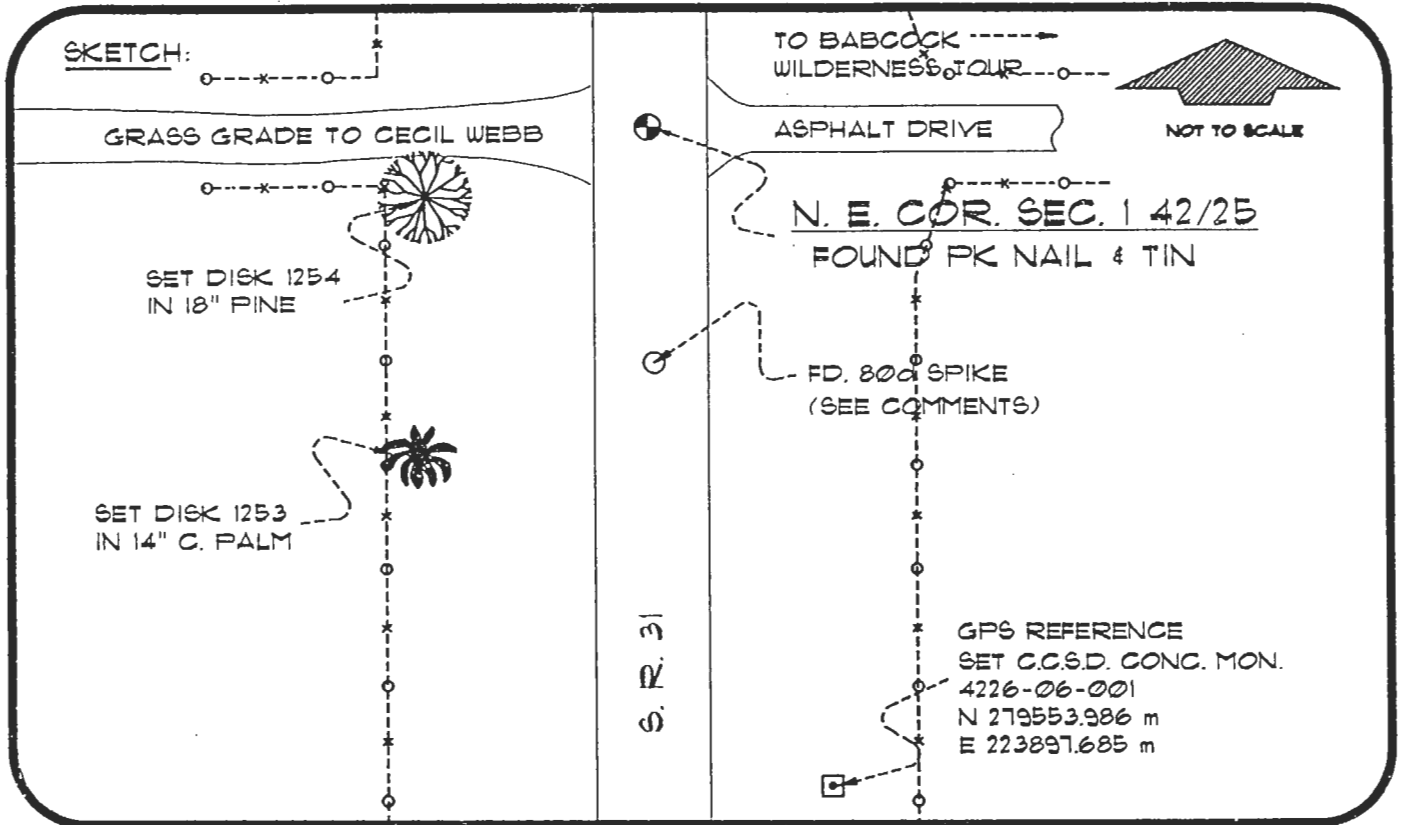
Control point(s) used for survey: CHARLOTTE COUNTY HORIZONTAL CONTROL NETWORK INCLUDES HAYOLINE 2, PLACIDA 2, W260, PUNTPORT, & FLGPS 58 AS B ORDER STATIONS.

Comments: 80d NAIL WAS USED AS SEC. COR. BY R.J. HIMES PLS 3949 WITH D. HALL & ASSOC. IN DNR CCR # 21503, HOWEVER THE PK NAIL & TIN USED BY K. ROAN HAS BEEN USED BY ADJACENT OWNERS AND MATCHES OCCUPATION AND CONSTRUCTION BY THESE OWNERS.

056817

4225A25

DOC. #



BASIS OF BEARING SOLAR OBSERVATION

REFER: FB 317/13

REFERENCE MEASUREMENTS

Description	Bearing	Distance
DISK 1254 IN 18" PINE	S 60°13'48" W	44.22'
DISK 1253 IN 14" C. PALM	S 16°22'19" W	118.30'
80 d SPIKE	S 00°46'14" E	85.18'
4226-06-001	S 06°33'26" E	350.90'

SURVEYORS CERTIFICATE: I certify the monument and accessories indicated above were field located on NOVEMBER 22, 1995

R. Rose

PLS 4260

REVISION FOR
CCR#055501

SIGNATURE

JULY 18, 1996

DATE

CHARLOTTE COUNTY SURVEY DEPT.

FIRM OR AGENCY

1000 FLORIDA STREET

ADDRESS

PUNTA GORDA, FLA. 33950

CITY

STATE

471
TUCKERS
CORNER



SEND TO:

Department of Environmental Protection
Bureau of Survey and Mapping
3300 Commonwealth Boulevard
Mall Station 105
Tallahassee, Florida 32309

Completeness checked by: *R. Blinzer*

Accepted and filed: 8-1-96

DATE

BLM. - I.D. 01363106 D.E.P. USE ONLY