

FLORIDA DEPARTMENT OF ENVIRONMENTAL PROTECTION
CERTIFIED CORNER RECORD

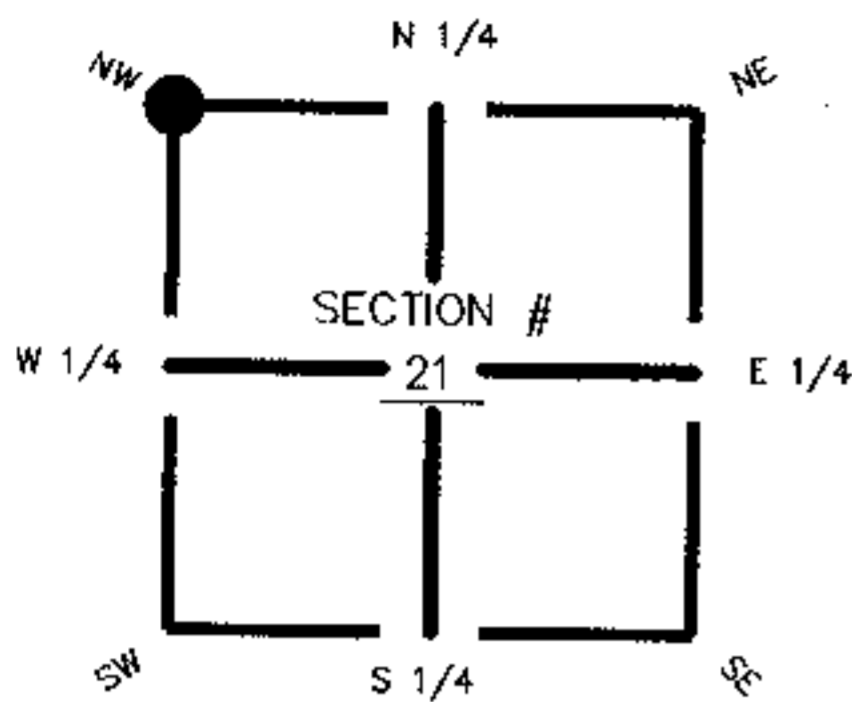
DOC. #

083871

CORNER DESCRIPTION: MONUMENTATION DESCRIPTION (EVIDENCE FOUND OR METHOD TO SET)

Depict corner with ●

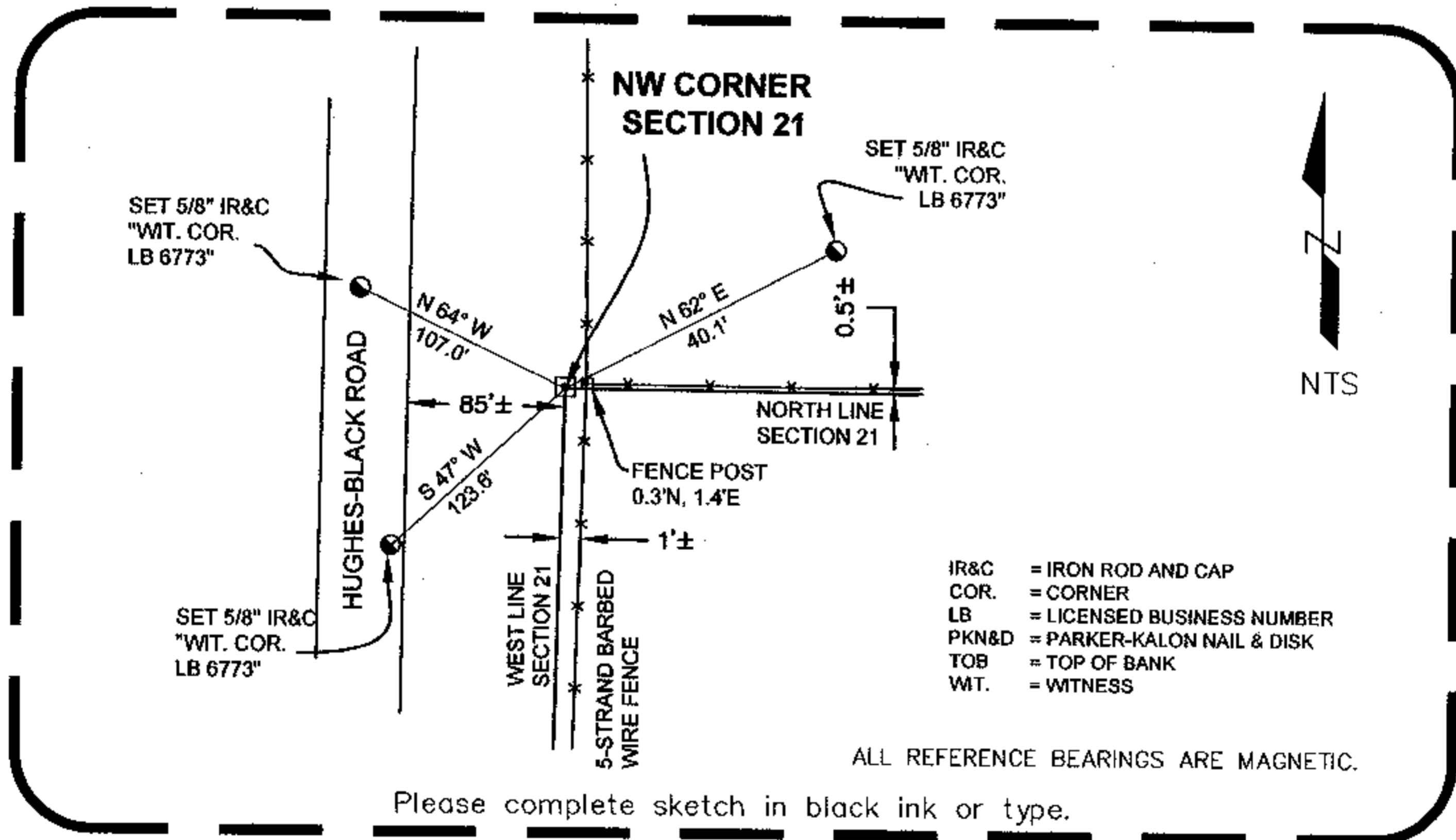
FOUND 8" DIAMETER CONCRETE MONUMENT WITH DISK
 STAMPED "CHARLOTTE COUNTY SURVEY DEPT. 1998
 (SEC COR)"



NW corner of Section 21
 Twp 42 South, Rge 25 East
 Tallahassee Base Meridian,
 CHARLOTTE County, Florida

HORIZONTAL POSITION AND HEIGHT INFORMATION (if determined):

Latitude _____ Longitude _____
 Y(NORTHING-Ft.) 901451.9890 X(EASTING-Ft.) 713068.2550 Zone FL W
 Convergence _____ Scale factor _____
 Coordinate determination (circle one): Field traverse GPS
 Horizontal datum (circle one): NAD27 NAD83(1986) NAD83(1990) other (explain)
 Accuracy (circle one): 1st 2nd 3rd other _____



SURVEYORS CERTIFICATE:

I certify the monument and accessories indicated above were field located on OCTOBER 25, 2004

[Signature]
 SIGNATURE _____ 6476
 DATE 6476 2/14/05 PSM NO.
 JEFFREY C. COONER & ASSOC. 6773
 FIRM OR AGENCY LB NO.
 3900 COLONIAL BLVD., SUITE 4
 FT. MYERS, FL 33912
 CITY STATE ZIP

EMBOSSSED SEAL OVER SIGNATURE

SEND ORIGINAL TO:
 Department of Environmental Protection
 Bureau of Survey and Mapping
 3900 Commonwealth Boulevard
 Mail Station 105
 Tallahassee, Florida 32399

D.E.P. USE ONLY
 Completeness checked by: S.4m.
 Accepted and filed: 3-7-05 Date
 B.L.M. - I.D. 300400
 QUAD - I.D. 2315 Tucker's Corner