

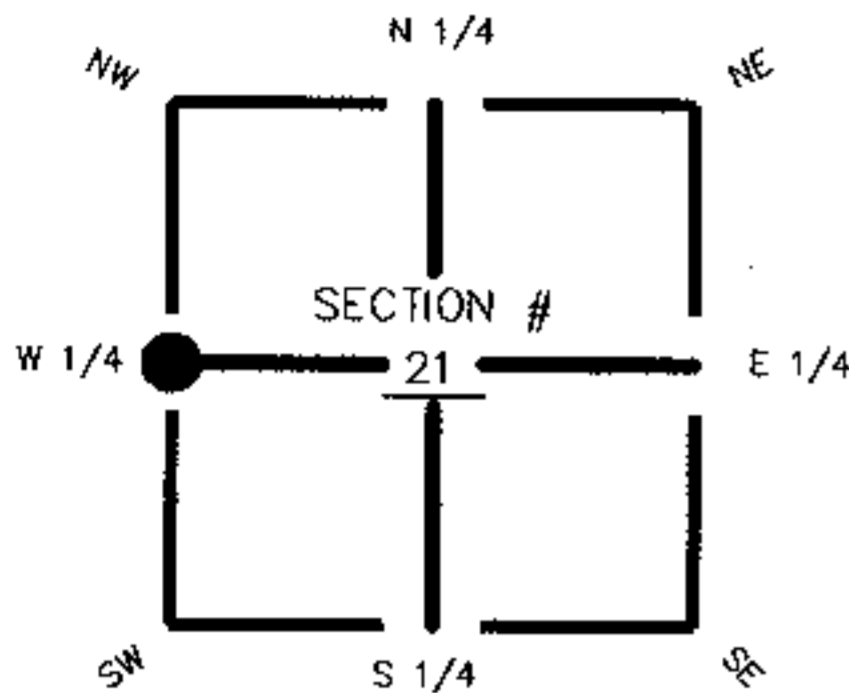
FLORIDA DEPARTMENT OF ENVIRONMENTAL PROTECTION
CERTIFIED CORNER RECORD

DOC. # 083804

CORNER DESCRIPTION: MONUMENTATION DESCRIPTION (EVIDENCE FOUND OR METHOD TO SET)

Depict corner with ●

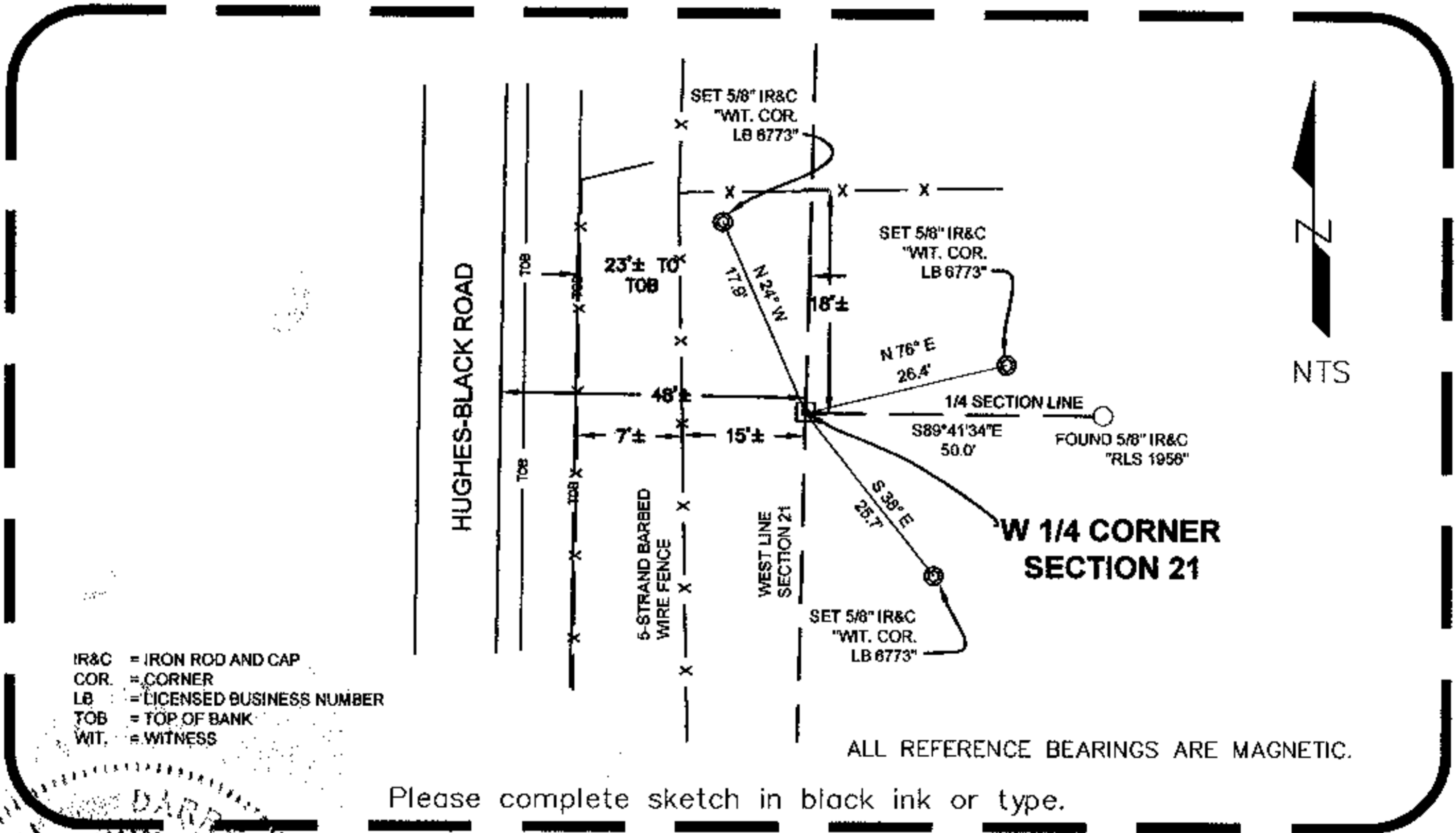
FOUND 4"X4" CONCRETE MONUMENT WITH DISK STAMPED
 "LEE COUNTY ENG. LB 3590"



HORIZONTAL POSITION AND HEIGHT INFORMATION (if determined):

Latitude _____ Longitude _____
 Y(NORTHING-Ft.) 898812.7010 X(EASTING-Ft.) 713005.4765 Zone FL W
 Convergence _____ Scale factor _____
 Coordinate determination (circle one): Field traverse (GPS)
 Horizontal datum (circle one): NAD27 NAD83(1986) (NAD83(1990)) other (explain) _____
 Accuracy (circle one): 1st 2nd 3rd other _____

W1/4 corner of Section 21
 Twp 42 South, Rge 25 East
 Tallahassee Base Meridian,
CHARLOTTE County, Florida



IR&C = IRON ROD AND CAP
 COR. = CORNER
 LB = LICENSED BUSINESS NUMBER
 TOB = TOP OF BANK
 WIT. = WITNESS

ALL REFERENCE BEARINGS ARE MAGNETIC.

Please complete sketch in black ink or type.

SURVEYORS CERTIFICATE:

I certify the monument and accessories indicated above were field located on OCTOBER 25, 2004

[Signature] 6476
 SIGNATURE PSM NO.
2/14/05
 DATE
JEFFREY C. COONER & ASSOC. 6773
 FIRM OR AGENCY LB NO.
3900 COLONIAL BLVD., SUITE 4
 ADDRESS
FT. MYERS FL 33912
 CITY STATE ZIP

SEND ORIGINAL TO:
 Department of Environmental Protection
 Bureau of Survey and Mapping
 3900 Commonwealth Boulevard
 Mail Station 105
 Tallahassee, Florida 32399

D.E.P. USE ONLY
 Completeness checked by: S.M.
 Accepted and filed: 2-17-05 Date
 B.L.M. - I.D. 300340
 QUAD - I.D. 2315 Tuckers Corner

EMBOSSSED SEAL OVER SIGNATURE