

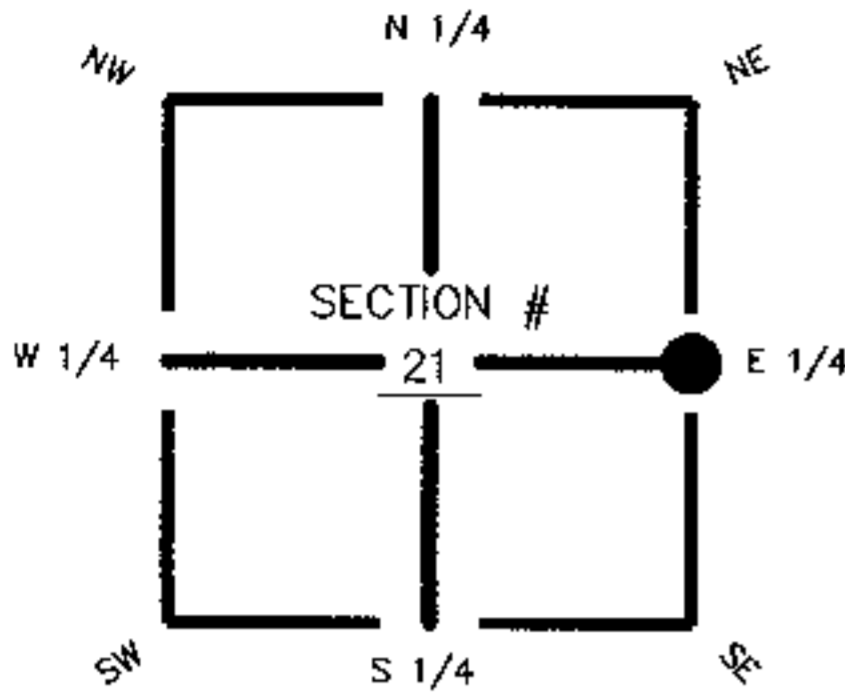
FLORIDA DEPARTMENT OF ENVIRONMENTAL PROTECTION  
CERTIFIED CORNER RECORD

DOC. #

CORNER DESCRIPTION: MONUMENTATION DESCRIPTION (EVIDENCE FOUND OR METHOD TO SET)

Depict corner with ●

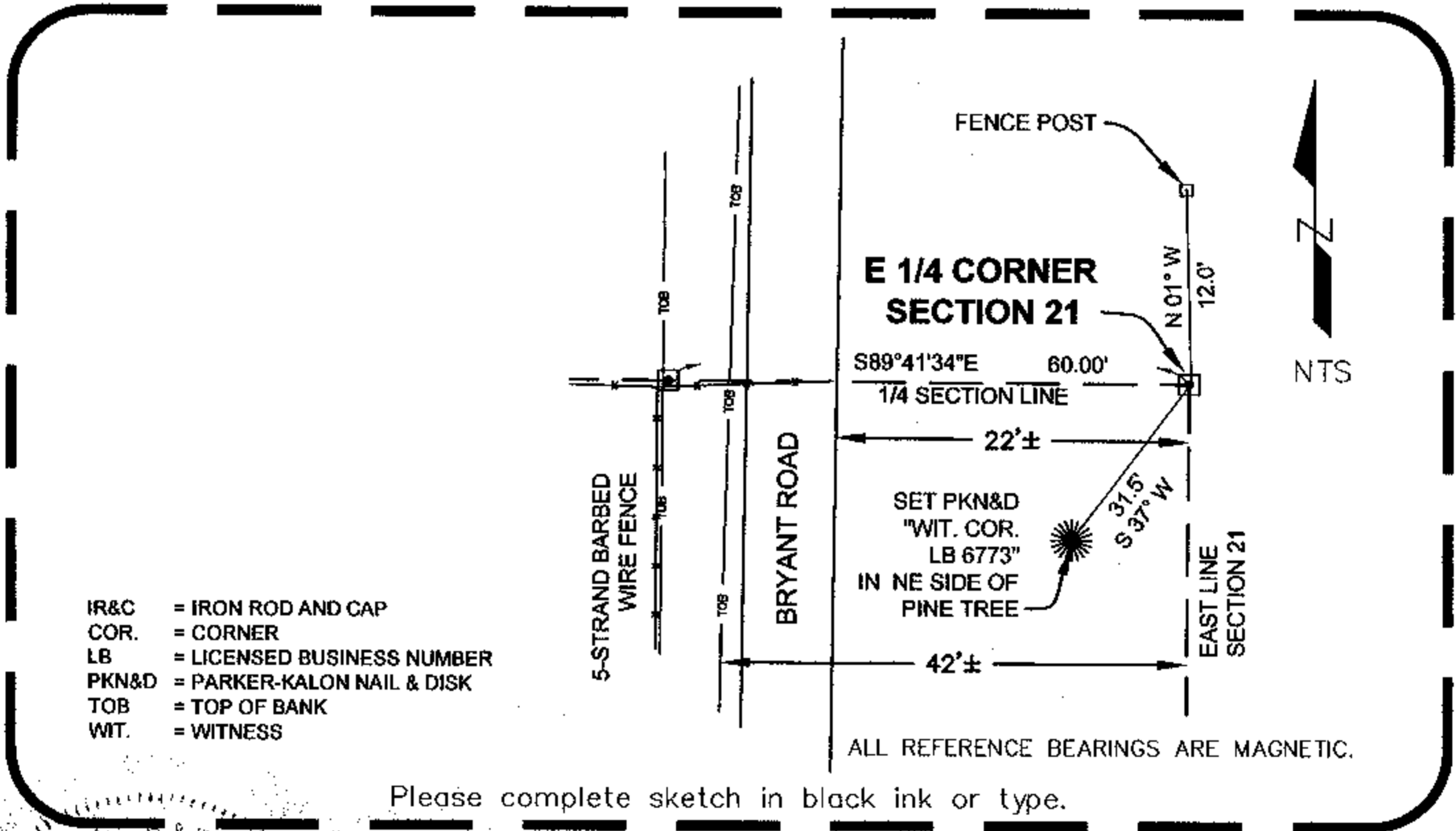
FOUND 3"X3" CONCRETE MONUMENT WITH "X" IN CENTER



E 1/4 corner of Section 21  
Twp 42 South, Rge 25 East  
Tallahassee Base Meridian,  
CHARLOTTE County, Florida

HORIZONTAL POSITION AND HEIGHT INFORMATION ( if determined ):

Latitude \_\_\_\_\_ Longitude \_\_\_\_\_  
Y(NORTHING-Ft.) 898784.1630 X(EASTING-Ft.) 718328.2385 Zone FL W  
Convergence \_\_\_\_\_ Scale factor \_\_\_\_\_  
Coordinate determination (circle one): Field traverse GPS  
Horizontal datum (circle one): NAD27 NAD83(1986) NAD83(1990) other (explain)  
Accuracy (circle one): 1st 2nd 3rd other \_\_\_\_\_



- IR&C = IRON ROD AND CAP
- COR. = CORNER
- LB = LICENSED BUSINESS NUMBER
- PKN&D = PARKER-KALON NAIL & DISK
- TOB = TOP OF BANK
- WIT. = WITNESS

ALL REFERENCE BEARINGS ARE MAGNETIC.

Please complete sketch in black ink or type.

SURVEYORS CERTIFICATE:

I certify the monument and accessories indicated above were field located on OCTOBER 25, 2004

*[Signature]*  
SIGNATURE \_\_\_\_\_ PSM NO. 6476  
DATE 2/14/05  
JEFFREY C. COOPER & ASSOC. 6773  
FIRM OR AGENCY LB NO.  
3900 COLONIAL BLVD., SUITE 4  
ADDRESS  
FT. MYERS FL 33912  
CITY STATE ZIP

SEND ORIGINAL TO:  
Department of Environmental Protection  
Bureau of Survey and Mapping  
3900 Commonwealth Boulevard  
Mail Station 105  
Tallahassee, Florida 32399

D.E.P. USE ONLY  
Completeness checked by: S.M.  
Accepted and filed: 2-17-05 Date  
B.L.M. - I.D. 400340  
QUAD - I.D. 2315 Tuckers Corner

EMBOSSSED SEAL OVER SIGNATURE