

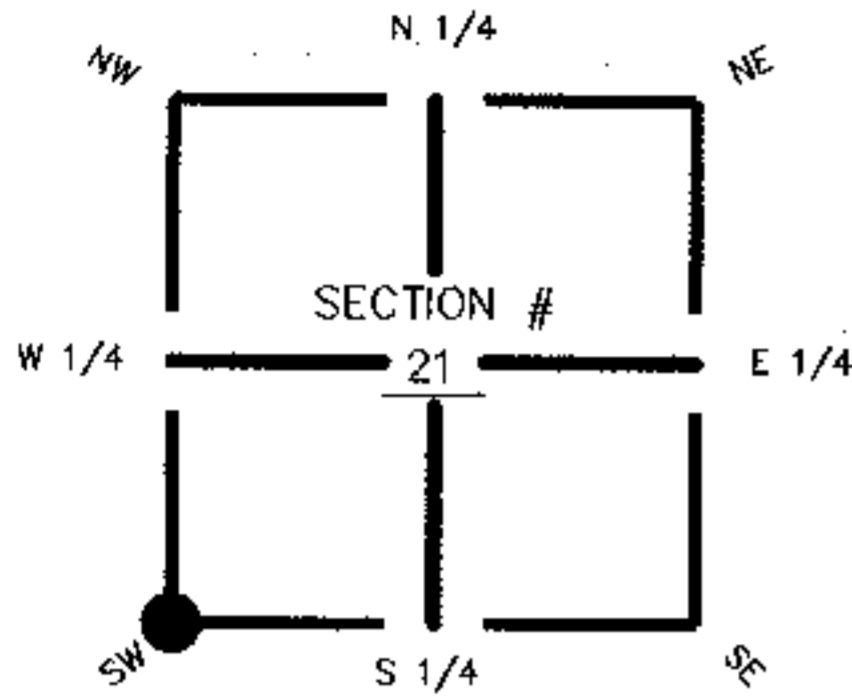
FLORIDA DEPARTMENT OF ENVIRONMENTAL PROTECTION
CERTIFIED CORNER RECORD

DOC. #

CORNER DESCRIPTION: MONUMENTATION DESCRIPTION (EVIDENCE FOUND OR METHOD TO SET)

Depict corner with ●

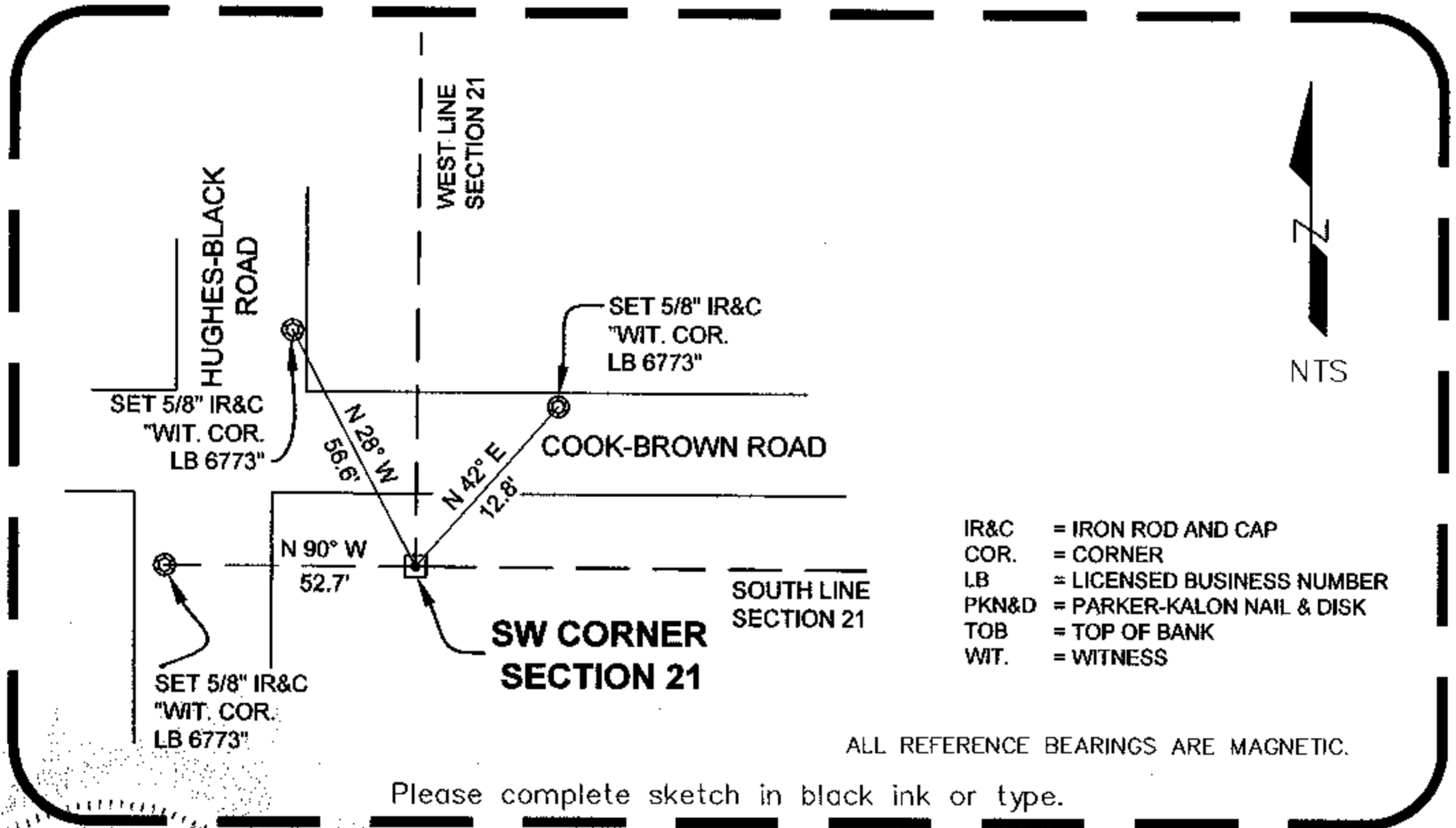
FOUND 3"X3" CONCRETE MONUMENT WITH BRASS DISK STAMPED "STARNES ASSOC. LB 2465"



SW corner of Section 21
Twp 42 South, Rge 25 East
Tallahassee Base Meridian,
CHARLOTTE County, Florida

HORIZONTAL POSITION AND HEIGHT INFORMATION (if determined):

Latitude _____ Longitude _____
Y(NORTHING-Ft.) 896173.4130 X(EASTING-Ft.) 712942.6980 Zone FL W
Convergence _____ Scale factor _____
Coordinate determination (circle one): Field traverse GPS
Horizontal datum (circle one): NAD27 NAD83(1986) NAD83(1990) other (explain)
Accuracy (circle one): 1st 2nd 3rd other _____



- IR&C = IRON ROD AND CAP
- COR. = CORNER
- LB = LICENSED BUSINESS NUMBER
- PKN&D = PARKER-KALON NAIL & DISK
- TOB = TOP OF BANK
- WIT. = WITNESS

ALL REFERENCE BEARINGS ARE MAGNETIC.

Please complete sketch in black ink or type.

SURVEYORS CERTIFICATE:

I certify the monument and accessories indicated above were field located on OCTOBER 25, 2004

[Signature] 6476
SIGNATURE PSM NO.
DATE 2/14/05
JEFFREY C. COONER & ASSOC. 6773
FIRM OR AGENCY LB NO.
3900 COLONIAL BLVD., SUITE 4
ADDRESS
FT. MYERS FL 33912
CITY STATE ZIP

EMBOSSSED SEAL OVER SIGNATURE

SEND ORIGINAL TO:
Department of Environmental Protection
Bureau of Survey and Mapping
3900 Commonwealth Boulevard
Mail Station 105
Tallahassee, Florida 32399

D.E.P. USE ONLY
Completeness checked by: Sm
Accepted and filed: 2-17-05 Date
B.L.M. - I.D. 300300
QUAD - I.D. 2315 Tuckers Corner