

# FLORIDA DEPARTMENT OF ENVIRONMENTAL PROTECTION

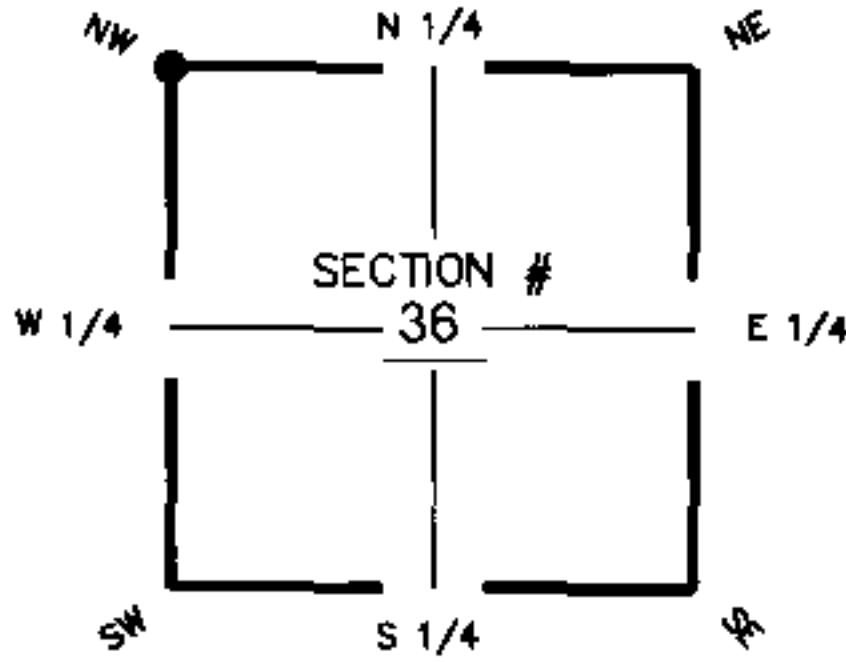
## CERTIFIED CORNER RECORD

DOC. # 085473

**CORNER DESCRIPTION:**      **MONUMENTATION DESCRIPTION (EVIDENCE FOUND OR METHOD TO SET)**

Depict corner with

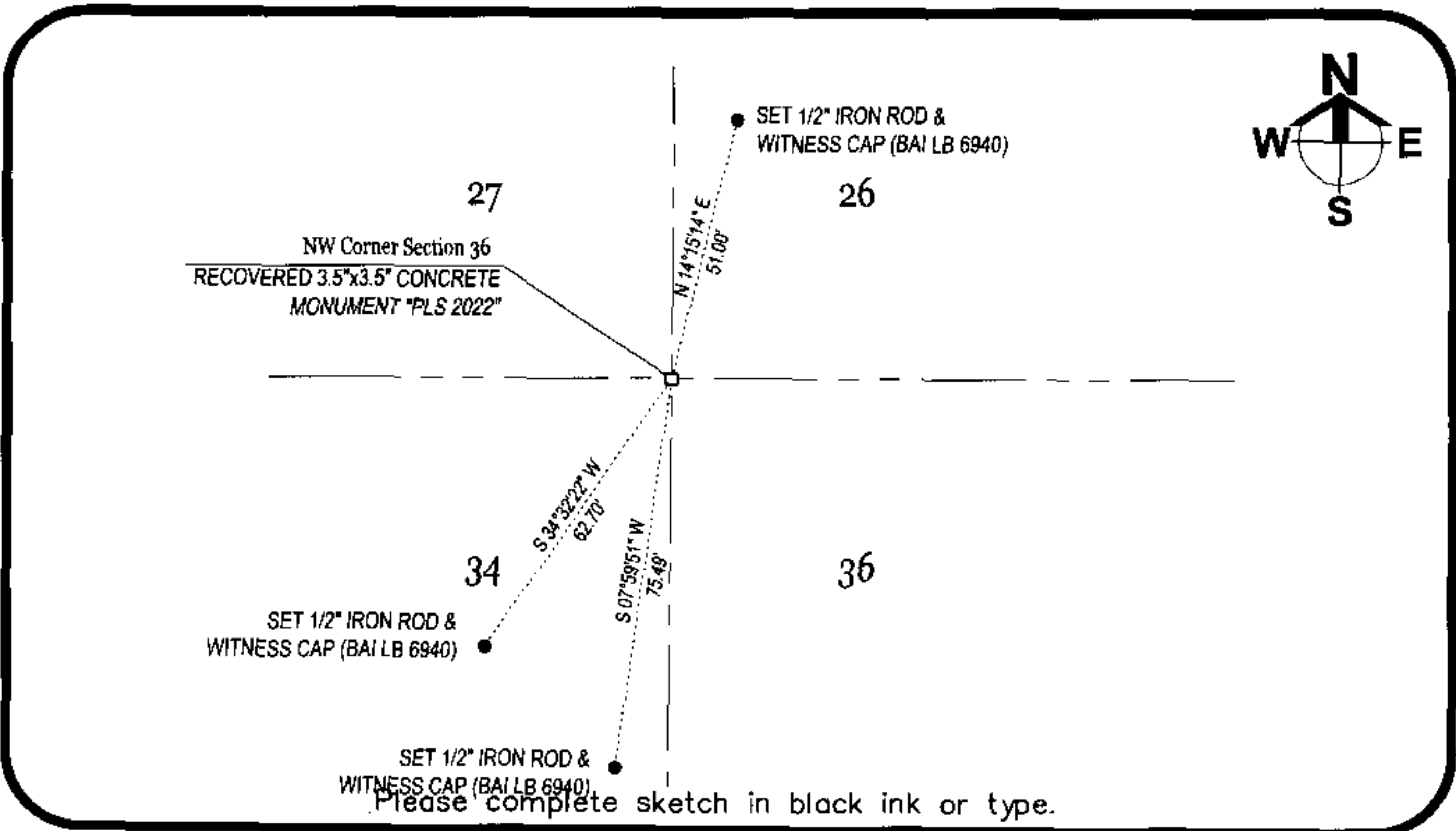
RECOVERED 3.5"x3.5" CONCRETE MONUMENT "PLS 2022" FROM CERTIFIED CORNER RECORD (DOC. # 36500). NEW WITNESS CORNERS SET.



NW corner of Section 36  
Twp 42S Rge 25E  
Tallahassee Base Meridian,  
Charlotte County(s), Florida

**HORIZONTAL POSITION INFORMATION ( if determined ):**

Latitude 26°47'03.56971452"N      Longitude 81°46'37.08286641"W  
 Y(NORTHING-Ft.) 890837.1826      X(EASTING-Ft.) 728928.5766      Zone WEST  
 Convergence 0°06'01.8227      Scale factor 0.99994725  
 Coordinate determination (circle one):      Field traverse  GPS  NAD83(1999)  
 Horizontal datum (circle one): NAD27    NAD83(1986)    NAD83(1990)    other (explain) \_\_\_\_\_  
 Accuracy (circle one):  1st    2nd    3rd    other \_\_\_\_\_



**SURVEYORS CERTIFICATE:**

I certify the monument and accessories indicated above were field located on 09-12-2005

*[Signature]*  
 SIGNATURE: \_\_\_\_\_ PSM NO. 5949  
 BARRACO & ASSOCIATES FIRM OR AGENCY LB NO. 6940  
 2271 Mcgregor Boulevard ADDRESS  
 Fort Myers CITY FL 33902 STATE ZIP  
 (239) 461-3170 PHONE NUMBER 09-15-2005 DATE

SEND ORIGINAL TO:  
 Department of Environmental Protection  
 Bureau of Surveying and Mapping  
 3900 Commonwealth Boulevard  
 Mail Station 105  
 Tallahassee, Florida 32399

Processed: 10/5/05 NMB  
 B.L.M. - I.D. 600200  
 QUAD - I.D. 2315 TUCKERS CORNER

EMBOSSSED SEAL OVER SIGNATURE