

FLORIDA DEPARTMENT OF ENVIRONMENTAL PROTECTION CERTIFIED CORNER RECORD

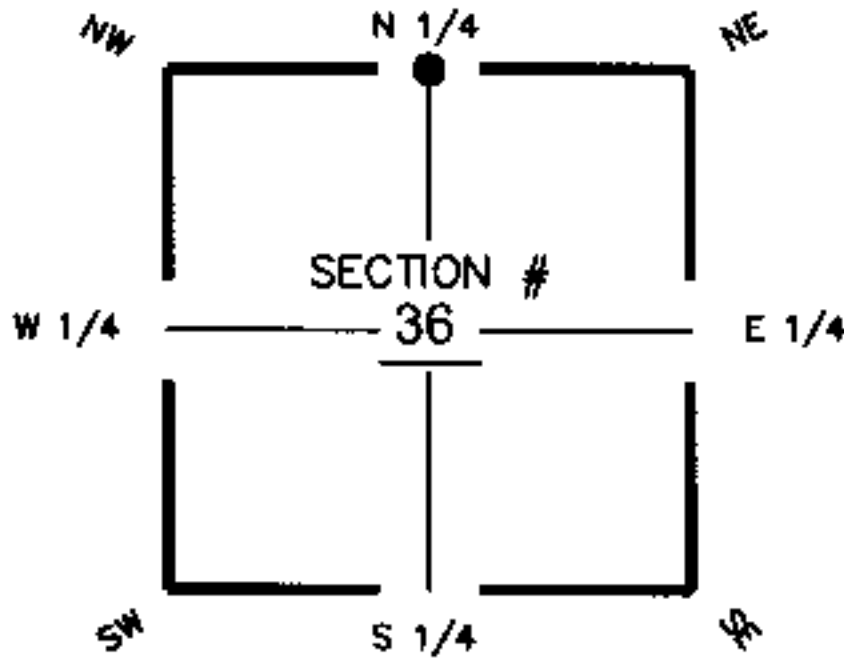
DOC. # 085474

CORNER DESCRIPTION:

MONUMENTATION DESCRIPTION (EVIDENCE FOUND OR METHOD TO SET)

Depict corner with

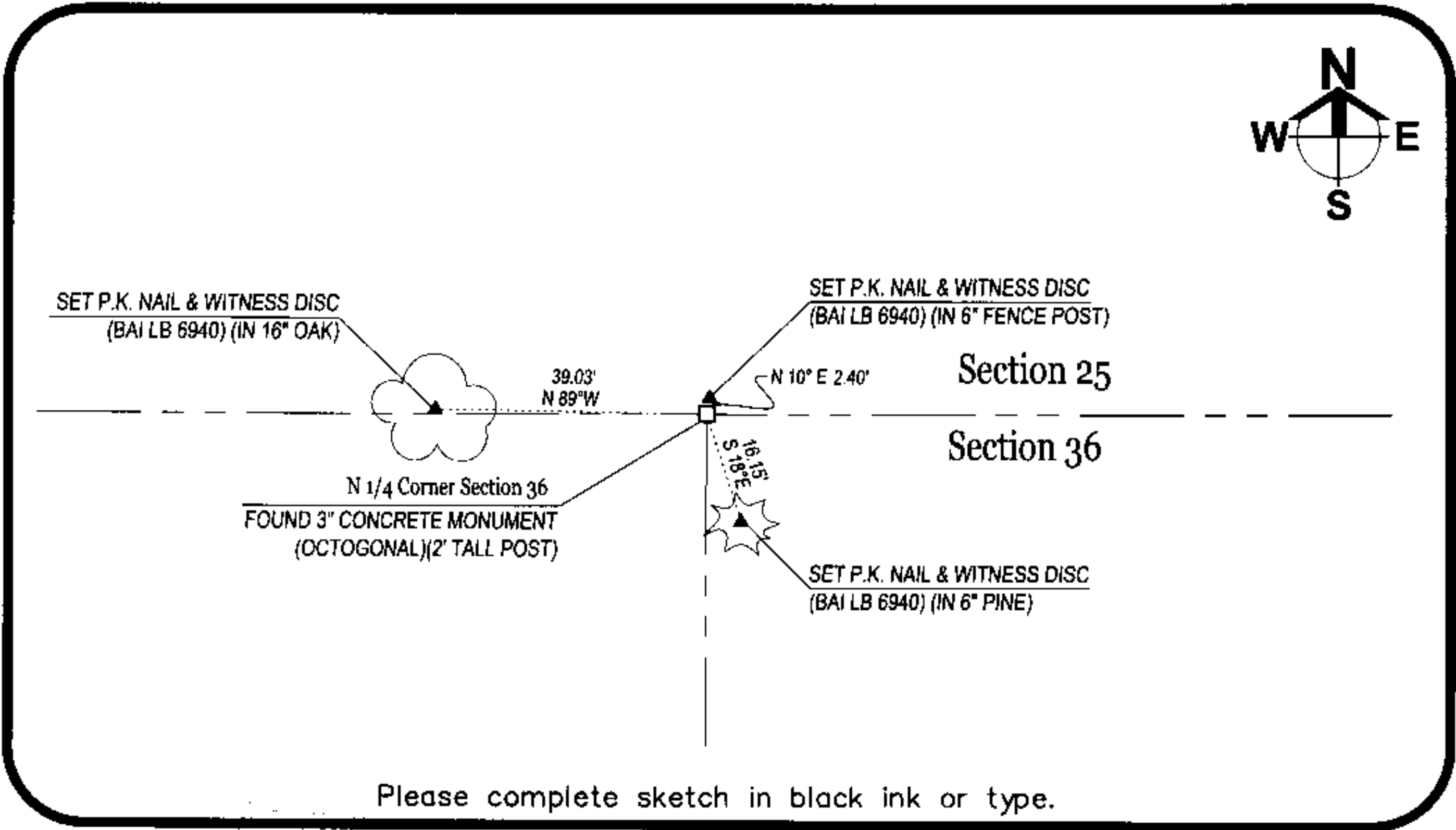
FOUND 3" CONCRETE MONUMENT (OCTOGONAL)(2' TALL POST). WITNESS CORNERS SET.



N 1/4 corner of Section 36
Twp 42S Rge 25E
Tallahassee Base Meridian,
Charlotte County(s), Florida

HORIZONTAL POSITION INFORMATION (If determined):

Latitude 26°47'03.50294968"N Longitude 81°46'07.82271570"W
Y(NORTHING-Ft.) 890835.1773 X(EASTING-Ft.) 731580.2090 Zone WEST
Convergence 0°06'15.0082 Scale factor 0.99994770
Coordinate determination (circle one): Field traverse GPS NAD83(1999)
Horizontal datum (circle one): NAD27 NAD83(1986) NAD83(1990) other (explain)
Accuracy (circle one): 1st 2nd 3rd other _____



Please complete sketch in black ink or type.

SURVEYORS CERTIFICATE:

I certify the monument and accessories indicated above were field located on 09-12-2005

Scott Barraco
SIGNATURE _____ PSM NO. 5949
Barraco & Associates FIRM OR AGENCY _____ LB NO. 6940
2271 McGregor Boulevard ADDRESS
Fort Myers CITY FL. 33902
(239) 461-3170 PHONE NUMBER 09-15-2005 DATE

SEND ORIGINAL TO:
Department of Environmental Protection
Bureau of Surveying and Mapping
3900 Commonwealth Boulevard
Mail Station 105
Tallahassee, Florida 32399

D.E.P. USE ONLY

Processed: 1015105 MMB
B.L.M. - I.D. 640200
QUAD - I.D. 2315Tuckerscorner

EMBOSSSED SEAL OVER SIGNATURE